



# Planning to achieve Carbon Reduction Commitment Targets for Healthcare Premises

## Practical Information and Guidance

### PROGRAMME:

- 9.30 Registration & Refreshments
- 10.00 Opening remarks from the Chair
- 10.10 Saving Carbon - Improving Health  
*David Pencheon, NHS Sustainable Development Unit*
- 10.40 CRC Energy Efficiency Scheme: An overview of CRC  
*Peter Clutton-Brock, Dept of Energy & Climate Change*
- 11.10 Morning Refreshments
- 11.25 Challenges & Opportunities of Sustainability for NHS  
*Sarah Daly, Heath-Avery Architects*
- 11.55 BRE Environmental Assessment Method (BREEAM)  
*David Leonard, BRE*
- 12.25 Question & Answer Session
- 12.45 Lunch
- 13.30 Existing Buildings Survival Strategies  
*Chris Jofeh, Arup*
- 14.00 Optimising Low and Zero Carbon Technologies  
in Healthcare Buildings  
*Chris Hall, BRE*
- 14.30 Afternoon Refreshments
- 14.45 Why Lighting is a Sustainability Issue  
*Graeme Hall, Brandon Medical*
- 15.10 Case study:  
The Barts & London carbon footprint study  
*Paul Brockway, Arup*
- 15.30 Case Study:  
Lean Procurement - Liverpool Women's Hospital  
*Quentin Drewell, Arup*
- 15.50 Return on Sustainable Development  
- How to engage your finance community  
*Doug Johnston, Ernst & Young*
- 16.20 Question & Answer Session
- 16.30 Chair's closing remarks and close of seminar

### LOCATIONS & DATES :

**BIRMINGHAM** 24<sup>th</sup> March 2010

**LONDON** 20<sup>th</sup> April 2010

**LEEDS** 29<sup>th</sup> April 2010

For further details of the programme and Chairs for each seminar, please refer to [www.iheem.org.uk/events](http://www.iheem.org.uk/events)

**Please note that the programme is subject to change.**

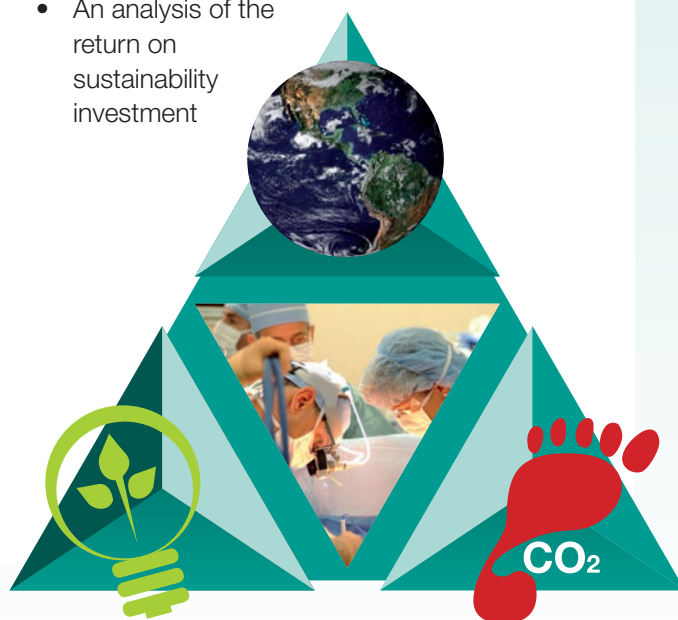
This seminar puts into context the implications of current legislation for Healthcare Estates and Facilities, and explores the current range of technological developments addressing the sustainability requirements placed on Healthcare premises.

Methods of calculating carbon footprints and the development of reduction strategies will be explored along with a number of case studies demonstrating possible ways forward.

Relevant to all Estates and Facilities directors and managers, technical services managers, design consultants and procurement leads, this seminar will provide a comprehensive update on CRC and sustainability issues.

The sessions will include:

- An overview of the current Carbon Agenda
- The CRC Energy Efficiency Scheme
- An update of relevant HTM documents
- An examination of current LZCT
- Case studies
- An analysis of the return on sustainability investment





**IHEEM**  
Institute of Healthcare Engineering and Estate Management



**PLANNING TO ACHIEVE CARBON REDUCTION COMMITMENT TARGETS  
FOR HEALTHCARE PREMISES – PRACTICAL INFORMATION AND GUIDANCE**

# REGISTRATION FORM

**FAX BACK to 02392 815927**

PLEASE TICK WHICH DATE YOU WISH TO ATTEND.

- 24<sup>th</sup> March 2010, Birmingham  
 20<sup>th</sup> April 2010, London  
 29<sup>th</sup> April 2010, Leeds

**THE DELEGATE RATE IS:**

£195 + VAT for IHEEM Members

£245 + VAT for non members

Prices include a delegate pack, all refreshments on the day and a CPD certificate.

<b>NAME:</b>
<b>POSITION / GRADE:</b>
<b>HOSPITAL/COMPANY:</b>
<b>ADDRESS:</b>
<b>POST CODE:</b>
<b>TEL:</b>
<b>FAX:</b>
<b>EMAIL:</b>
<b>IHEEM MEMBER:</b> <input type="checkbox"/> Y <input type="checkbox"/> N
<b>MEMBERSHIP NUMBER:</b>

I will forward a cheque for the sum of £\_\_\_\_\_ (made payable to IHEEM)  
or please send an invoice using order no \_\_\_\_\_ (NHS only)

If you wish to make a payment by credit or debit card please call the office number  
on 02392 823186.

You can also book this event online at [www.iheem.org.uk/events](http://www.iheem.org.uk/events)

Please note it may be necessary to amend some details of the programme.

## TERMS AND CONDITIONS

### DATA PROTECTION

By entering your details in the fields to the left, you agree to allow IHEEM and companies associated with this event to contact you (by mail, email, telephone, SMS or fax) regarding their services. If you do not wish to receive such communications please tick here

### BOOKING CONDITIONS

A confirmation email will be sent, from us within 3-5 working days from receipt of your booking. Please note that an invoice will be sent to you within 7-10 working days. Payments must be received before the seminar date. If payment is not received, delegates will be asked to guarantee payment with a personal credit card on the day.

For NHS employees only, a Purchase Order number prior to the event is acceptable.

### CANCELLATIONS / SUBSTITUTIONS

Cancellations received less than 10 working days before the event will be charged 50% of the appropriate rate, non-attendees will be charged at the full rate. Delegates may be substituted at any time for an amendment fee of £15. Cancellations and substitutions must be made in writing.

## FOR FURTHER DETAILS

### PLEASE CONTACT:

Jeff Pickering

**Tel:** 02392 823186

**Fax:** 02392 815927

IHEEM

2 Abingdon House  
Cumberland Business Centre  
Portsmouth, PO5 1DS

**Email:** [events@iheem.org.uk](mailto:events@iheem.org.uk)

**Website:** [www.iheem.org.uk](http://www.iheem.org.uk)