



SDA | Services
Design
Associates

Mental Health & Healthcare Practice Profile

Unit 1, Acres Hill Business Park,
Acres Hill Lane, Sheffield S9 4LR
Tel: 0114 244 7555 | Fax: 0114 244 6008 |
www.sda.co.uk



SHEFFIELD
PROPERTY
ASSOCIATION

Contents

Introduction	2
Who are SDA	3
Our Philosophy	4
Our services	5
Some of our Clients	6
Case Studies	7
Healthcare Experience	22
Mental Health Experience	
Contact Details	





Introduction

I hope this company Healthcare profile gives you a great insight into SDA as a business and demonstrates how proud we are of the projects we are a part of. At SDA we create, design and implement efficient, effective and elegant systems for ventilation, heating and cooling, lighting, power distribution and all the other systems a building needs to bring it to life. We also use these systems to create stimulating, healthy and productive environments for people.

Client satisfaction is part of the businesses core values, so whether your scheme is a small refurbishment or a large complex new development our work ethic and passion does not change in wanting to deliver the best possible solutions and outcomes.

As an engineering business our unique sell point is very much in the fact we enjoy delivering complex and challenging schemes, detailed design is a standard part of our offering and its on this premise the company was founded.

Thank you for taking time to read our profile and we look forward to working with you.



Paul Hoyes
Managing Director



Matt Smith
Director

Who are SDA

SDA is a well-established, independent, Sheffield based building services engineering practice, operating from a purpose built office development within Acres Hill Business Park, Sheffield. The practice was founded in 1988 to provide a design and advisory service to both the private and public sectors.

The business has extensive experience within the public sector and private sector which has resulted in a keen commercial awareness, which enables us to design and administer projects within tight financial constraints. SDA has a strong portfolio projects ranging from prestigious projects such as the University of Sheffield's Engineering Heartspace through to the very successful refurbishment of Doncaster Wool Market helping to create a vibrant town centre.

The practice employs a team of well-qualified and enthusiastic engineers whose joint experience covers all areas of building services. This currently comprises technically and professionally qualified engineering staff, together with trainees and support staff providing drafting, sales, administration and cost control back up. All members of the design team pride themselves in the specification and design of practical, sustainable and economic buildings.

The practice is quality assured in accordance with ISO 9001 and holds an ISO 14001 certificate for Environmental Management. The practice is registered with CIBSE, BSI, Constructionline and is SSIP Accredited with regard to Health & Safety.



© Non Secure Unit, Fieldhead Hospital



Our Philosophy

At SDA we have three key attributes that are the foundation of our philosophy and are always at the heart of how the company conducts its business: they are our Staff, Client & Sustainability Values.

- **Staff**

Our staff are the most important asset and we recognise this by ensuring we provide everyone with a stable environment in which they can flourish. SDA is dedicated to equality, diversity and inclusion to ensure we create a working environment that treats everyone with dignity, fairness and respect. Our message is simple "treat others how you wish to be treated yourself".

- **Clients**

SDA considers that all designs should be carried out in a practical and common sense manner, in order to achieve a rational solution specific to the Client's needs. We take great pride in the amount of repeat business received from our Clients. All members of SDA's team strive to ensure customer satisfaction and form lasting relationships as we strongly believe this is the most effective way to secure our place in the market.

- **Sustainability Values**

As part of our role in the construction industry, we see climate change and carbon reduction as the challenge that everyone needs to address. With the Government and local authorities setting out ambitious carbon neutral targets we, as engineers in the built environment, have responsibility for implementing change, pushing innovation and striving to maximise the use of renewable technologies, helping our Clients reduce their carbon footprint. Our ambition is not to just comply with industry standardised certification, but for all our projects we aim to inherit some form of the key UN Sustainable Development Goals which act as the blueprint to achieve a better and more sustainable future for all.



Our Services

- Electrical Engineering
- Mechanical Engineering
- Building Services Engineering
- Building Information Modelling (BIM)
- Sustainability Consulting
- Digital
- Lead Consultant / M&E Project Management
- ICT Infrastructure Design
- Dynamic Thermal Modelling
- Lighting Design
- High Voltage Design
- Low Zero Carbon Technology Consulting
- Energy Monitoring / Surveys and Assessments
- Accredited Fire Alarm Designers
- CO₂ Emissions Analysis (SBEM – Level 5 Assessors)
- Security Assessment / Design Services
- Energy Performance Certificates (EPC)
- Condition Surveys
- Audio Visual Assessments

A brief synopsis of some of our core services follow this page





Mechanical

At SDA we devise innovative services designs that create environments to suit the needs of processes and building users. Our designs are focussed to meet the needs of our Clients and incorporate life cycle costing's, energy efficiency and sustainability.

At SDA we have a sound working knowledge of current healthcare legislation such as HTM's where ventilation, heating, cooling, medical gases and domestic services are key to user comfort and functionality.

SDA also have the ability to undertake dynamic thermal models which involve daylight modelling, heat gain and heat loss calculations, overheating analysis, natural ventilation simulation, internal pollutant (AM10) analysis and Level 5 Part L Compliance.





Electrical



Our experience with power systems covers both low voltage and high voltage distribution. We focus upon designs using sound engineering principles to provide safe and robust solutions. All of our designs consider energy efficiency and sustainability.

At SDA we specialise in complex engineering challenges and have many years of experience working in environments which have essential & non-essential services, critical IT requirements, standby power systems and HV infrastructure.

SDA has over 30 years experience in the healthcare sector designing electrical services, we have extensive knowledge of power distribution, lighting, data, monitoring systems, call systems and audio visual systems.



Energy

NHS Trusts' energy usage has been rising year on year for the past decade, which is a trend that is set to continue beyond 2022 and puts added pressure on to budgets and affects frontline services, so there has never been a more important time to explore methods in reducing energy usage and costs.

Services Design Associates are accredited Level 5 Energy Assessors and with our dedicated independent energy team we are able to explore and give unbiased and realistic advice on the use of renewable technologies and methods of lowering energy usage.

Our energy team has the ability to produce Energy Performance Certificates together with associated reports suggesting tailored improvements to improve your EPC rating and lower energy costs.





Sustainability



NHS Trusts are under ever increasing pressure to lower their carbon footprint on society and act on reducing their impact to climate change. The Government and local authorities have set out goals for carbon neutral targets with the NHS Trust having to implement carbon reduction strategies. The NHS is responsible for 5.4% of the UK's total carbon emissions.

At SDA we can help, we have a dedicated energy team who are accredited CIBSE Low Carbon Consultants and can undertake CO2 emissions analysis and give independent advice on the effective use of sustainable technology.

At SDA our aim is not to just comply with industry standardised certification schemes, but for all our projects we aim to incorporate some form of the key UN Sustainable Development Goals which act as the blueprint to achieve a better and more sustainable future for all.



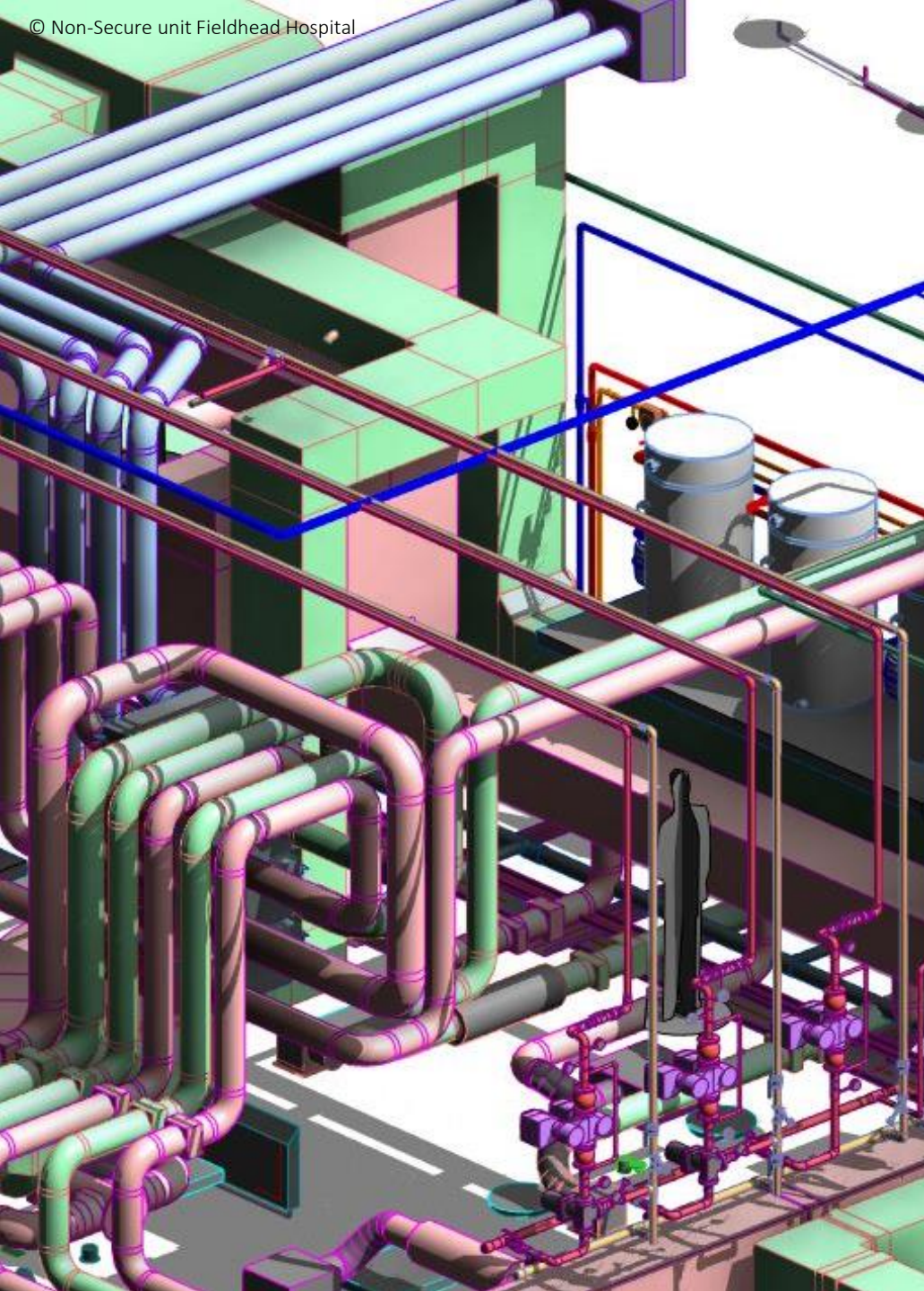
Digital

In addition to Building Information Modelling, Services Design Associates are expanding the use of digital technology to not only aid in house design processes but to also offer clients additional tailored digital services.

This involves new technologies such as augmented reality, the process of overlaying the digital world onto the real world. SDA has experience in using visualisations techniques to simulate how a building will look and feel to ensure it meets the clients requirements, this can range from photo quality lighting renders to computational fluid dynamics for ventilation solutions at SDA our aim is to use our digital innovation to enhance all our projects.

With a dedicated digital team SDA are well placed to explore any technological project delivery requirement the client may have. With expertise in digital information extraction and delivery, solar reflection studies using visualisation, smart technologies such as the Internet of Things (IOT) sensors as well as many other areas.





Building Information Modelling (BIM)



Services Design Associates produce the majority of their designs within a 3D environment. Over the years SDA have gained experience utilising Building Information modelling processes on a variety of projects, gaining valuable experience in this area. All SDA's staff have undertaken formally recognised training as well as in house schemes to develop specific knowledge.

SDA have utilised many cloud storage platforms to share and deliver their projects in a collaborative way, working closely with other project team members. To ensure that information is delivered in an organised and timely manor. By sharing models throughout the design process SDA have been able to react quicker to changes and adjust their design accordingly.

SDA have developed experience in model animation & visualisation, providing clients with a comprehensive and accurate visual, generated directly from the design model, clients can better see and understand what they can expect from the final installation.



Some of Our Clients

Sheffield Health and Social Care
NHS Foundation Trust

Sheffield Children's
NHS Foundation Trust

University Hospitals of Leicester
NHS Trust

South West Yorkshire Partnership
NHS Foundation Trust

Greater Manchester Mental Health
NHS Foundation Trust

Northern Lincolnshire and Goole
NHS Foundation Trust

Sheffield Teaching Hospitals
NHS Foundation Trust

Sherwood Forest Hospitals
NHS Foundation Trust

Nottingham University Hospital
NHS Trust

The Rotherham
NHS Foundation Trust

United Lincolnshire Hospitals
NHS Trust

Leeds and York Partnership
NHS Foundation Trust



Leeds Community Healthcare
NHS Trust

Nottinghamshire Healthcare
NHS Foundation Trust

Chesterfield Royal Hospital
NHS Foundation Trust

Derbyshire Community Health Services
NHS Foundation Trust

Doncaster and Bassetlaw Hospitals
NHS Foundation Trust

Mersey Care
NHS Foundation Trust

New MRI Facility



SDA | Services
Design
Associates



Northern Lincolnshire
and Goole
NHS Foundation Trust



Client: Northern Lincolnshire & Goole NHS Trust
Architect: P+HS Architects
Main Contractor: Hobson Porter
Project Value: c. £8m
Location: Grimsby, UK
Services Provided: Mechanical Engineering, Electrical Engineering, RIBA Stage 4 Technical design Level 2 BIM modelling.

2 New MRI scanner Rooms	1000 Extra patients per month to be treated	BIM level 2
--------------------------------------	--	-----------------------

M&E Design

SDA worked partnership with the Trust in the design of mechanical and electrical services to enable the disconnection and demolition of an existing modular office building and entrance, and the construction of a new imaging suite for 2No magnetic resonance imaging (MRI) machines and a covered corridor connecting the extension with the existing hospital building, with the aim to provide an enhanced patient experience, reducing waiting times and allowing for cancer patients to be diagnosed faster.

SDA produced a services strategy report for issue to the client, along with fire alarm cause and effect report and consequential improvement reports highlighting the ongoing maintenance and enhancement works carried out by the Trust to upgrade and maintain the estate.

The project involved the Creation of a new plantroom on the roof of the new MRI unit, modifications and additions to the mechanical services installations.

An element of this scheme included amendments and extensions to the electrical infrastructure, and the extension of the CSSD 2 switchboard building to accommodate the new switchboard, including the modification of the existing fire alarm, small power and lighting installations.

The new facility houses areas for both inpatients and outpatients, offices, changing areas, bed bays, recovery areas, toilets and MRI suites.



Non-Secure Adult Mental Health Facility



SDA | Services Design Associates



Client: South West Yorkshire Partnership NHS Foundation Trust
Architect: Stephen George Partnership
Main Contractor: Interserve Construction
Project Value: c. £18m
Location: Fieldhead Hospital - Wakefield, UK
Services Provided: Mechanical Engineering, Electrical Engineering, RIBA Stage 4 Technical design Level 2 BIM modelling.

5,356m²
GIFA

Anti-ligature Design

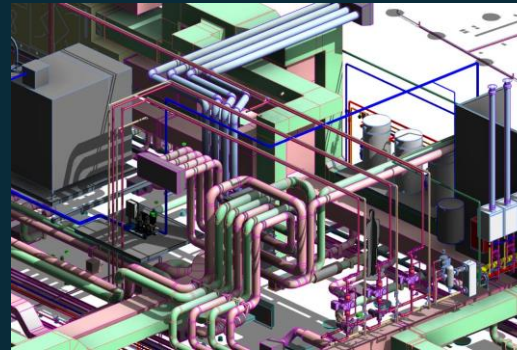
BIM
level 2

Project Description

The development comprised of a purpose built state-of-the-art therapeutic areas, en-suite bathrooms and vastly improved patient relaxation areas to help people on their journey to recovery. Other areas of the development included modernised visitor areas, an improved reception facility and a better working environment for staff.

The scheme comprised of a floor areas of 5,356m² which also included adult male and female wards, an older people's ward and a psychiatric intensive care unit (PICU).

This project was procured under the NHS Procure 21+ initiative and SDA acted as Principal Supply Chain Member to carry out the detailed design of all mechanical and electrical services. This project was undertaken using 3 dimensional modelling to assist in visualisation of the finished scheme and to allow co-ordination of services with the building structure.



M&E Design

SDA were appointed to carry out the detailed design of the mechanical and electrical services to enable the transformation of the existing facilities, to provide a 74 bed low secure adult mental health rehabilitation facility. The scheme had a number of complexities with the services as it was made up of a mixture of new build, refurbishment and demolition, but also contained a decant modular office accommodation and temporary patient decant facility.

Due to this the services needed very careful consideration around the phasing of the works. The detailed design was carried out in BIM (level 2) to enhance the co-ordination process due to the nature of the scheme. SDA helped drive this process in association with the rest of the design team and Interserve to help mitigate risks that would otherwise remained.

The project won Awards for Construction Excellence for Integration and Collaborative Working and Chartered Institute of Building for Collaborative Working.

The success of this scheme led Interserve appointing SDA to their design team on the £13m development at St Mary's Hospital in Armley, Leeds, to house the Trust's child and adolescent mental health (CAMHS) unit.

New Regional Cancer Centre for Children



SDA Services Design Associates

Sheffield Children's **NHS**
NHS Foundation Trust



Client: Sheffield Children's NHS Foundation Trust
Architect: AFL Architects
Main Contractor: G Wilkinson Construction Ltd
Project Value: c. £700,000
Location: Sheffield, UK
Services Provided: Mechanical Engineering, Electrical Engineering, RIBA Stage 4 Technical Design.

552m²

Charity Funded scheme
SDA Donation

5x
more treatment space than previous

Project Description

The new state of the art children's cancer centre at Sheffield Children's Hospital is called the PACT and Westfield Health Oncology and Haematology Centre. It was supported with charity donations from PACT Charity and Westfield Health.

It has been designed with input from parents, patients, clinicians and social workers for the best possible medical and emotional care. It has three times the clinic space of the previous facility and five times the treatment space.

The new facility allows all services to be fully integrated into a purpose built facility transforming the care provided to children.

Some of the benefits of the new PACT and Westfield Health Oncology and Haematology Centre include an integrated inpatient facility and clinic, a separate area for teenagers, dedicated access, better flow and privacy, a fully integrated team and more than three times the floor space than the previous facility.

The new unit is self-contained, allowing patients to be separated from the rest of the hospital providing less risk of picking up infections from other hospital patients – which is always a concern for immuno-suppressed cancer patients.

The facility has 5 times the treatment space and 3 times the clinical space compared to their old facility including room for day care patients and space for PACT staff, social workers and clinicians.



M&E Design

SDA's engineers worked closely with the Trust and PACT stakeholders to carry out our scope of duties. This consisted of taking the project from initial outline business case through to detailed design (RIBA stage 4a) and supporting the Client through the construction stage by undertaking the technical advisor and expert witnessing role.

The scheme presented many challenges due to being surrounded by a live hospital environment such as co-ordination and services isolations, however as part of our role we focused on making the facility as HTM compliant as it can and to address maintenance backlog issues where possible.

Social Value

SDA made a decision at the start of the project to donate half of our fee for the M&E design to support the PACT Fund. This was such a worthy cause and as local business we wanted to provide our support to this new facility which will provide important high quality care to children and their families of the surrounding region.



Child and Adolescent Mental Healthcare Services Facility



SDA | Services
Design
Associates



NHS
Leeds Community
Healthcare
NHS Trust



Client: Leeds Community Health Care NHS Trust
Architect: Gilling Dod Architects
Main Contractor: Tilbury Douglas
Project Value: c.20m
Location: St Mary's Hospital, Leeds, UK
Services Provided: Mechanical Engineering, Electrical Engineering, RIBA Stage 4 Technical design Level 2 BIM modelling.

16-bed
general adolescent
ward

6-bed
Psychiatric ICU

**BREEAM
Excellent**

M&E Design

SDA were approached by Interserve Construction, under the NHS Procure 22 initiative, to design mechanical and electrical services to facilitate construction of a new 22 bed Child and Adolescent Mental Healthcare Services (CAMHS) facility on the old St Mary's Hospital site in Armley, where young people can undergo treatment for serious mental health issues.

As part of the enabling works, existing buildings on the site were demolished, with SDA providing specifications identifying all services to be isolated and removed, including liaison with statutory authorities.

The building comprises bedrooms, en-suites, lounge areas, quiet rooms, meeting rooms, offices, changing rooms, dining rooms, serveries, classrooms, therapy rooms, kitchens, laundry rooms, WC's, medical dispensing, dirty utility, cleaner's cupboards, staff changing and rest facilities, de-escalation, seclusion and observation facilities.

The patient areas consist of two General Adolescent Wards (GAU), education facilities, a PICU (Psychiatric Intensive Care Unit) ward and a Section 136 ward (patients sectioned under the Mental Health Act).

All mechanical and electrical services installations, within all areas of the building with patient access, have been specified using anti-ligature solutions. The services installation was designed to achieve a BREEAM 'Excellent' rating.

This project was procured under the NHS P22 initiative and SDA acted as Principal Supply Chain Members to carry out the detailed design of all mechanical and electrical services to RIBA Stage 4.

Three dimensional modelling (BIM) was utilised to assist in visualisation of the finished scheme and to allow co-ordination of services with the building structure.





Client: University of Lincoln
Architect: HLM Architects
Main Contractor: BAM Construction
Project Value: c. £21m
Location: Lincoln, UK
Services Provided: Mechanical Engineering, Electrical engineering, LZC, Energy & Sustainability engineering design, RIBA Stage 3 design,

Carbon Neutral Strategy

Most Sustainable Building on Campus

BREEAM Excellent

M&E Design & Sustainability

Project Description

Lincoln Medical School enables medical students to experience real life situations encountered by those in the medical profession, it's through this brand new facility the University aim to attract the next generation of medical students. The building is made up of laboratories, clinical suites including mock consultation rooms to simulate hospital wards or a GP surgery as well as open plan teaching and break out spaces which provides opportunities for collaborative small group working, presentations and workshops.

Early aspirations were focused on a carbon neutral solution, however with biophilic design principles and the implementation of LZC technologies, this is the most sustainable building on the Lincoln University campus, achieving BREEAM 'Excellent'.



Providing a suitable environment and reducing energy consumption were the defining principles from the onset of the scheme in order to achieve a low carbon building. All aspects of the building were considered from its orientation, massing, building fabric along with passive servicing strategies that exploited solar gain and thermal mass to offset / supplement space heating, natural ventilation for fresh air and space cooling in summer. Also careful consideration of window positions, size and lighting transmittance factors to optimise daylight transmission reducing the need for artificial lighting and significantly reducing the buildings energy profile. These options were modelled to demonstrate their potential.

Low and zero carbon feasibility studies, carbon neutral reports, energy efficiency studies, space heating and hot water option appraisals were used throughout the design process to demonstrate capital investment, payback, lifecycle and operational costs benefits of each primary energy source considered. These were reviewed in collaboration with the University to inform the decision making process and justify the technologies provided in this facility.

In addition to passive design solutions, low energy technology (e.g. LED lighting and automatic lighting controls) and LZC technologies (e.g. air source heat pumps) were applied to meet the resultant energy needs of the building to deliver an energy efficient, low running cost and low carbon solution.

Laura Mitchell Health & Wellbeing Centre



SDA | Services Design Associates



Client: South West Yorkshire Partnership NHS Foundation Trust
Architect: P+HS Architects
Main Contractor: Interserve Construction
Project Value: c. £5m
Location: Halifax, UK
Services Provided: Mechanical Engineering, Electrical Engineering, RIBA Stage 4 Technical design Level 2 BIM modelling, low carbon energy study

2,020m² GIFA	Low Carbon Design	BIM level 2
-----------------------------------	--------------------------	-----------------------

Project Description

Bringing mental healthcare into the heart of the community, the new Laura Mitchell Centre provides a 'front door on the high street' with a modern building for centralised support within a stigma free, therapeutic environment.

South West Yorkshire NHS Foundation Trust were focused on transforming the services in Calderdale, providing a readily accessible community Hub with improved new health care services for local people: a welcoming building easily accessed on foot, bike, car or via public transport.

The three-story building provides a mix of out-patient consultation spaces for CAMHS, Adult and Older Adult Services as well as meeting spaces. The facility also accommodates a flexible work base for community staff with quiet meeting areas and breakfast bar as well as traditional desk arrangements for office based staff and a library. Public areas at street level include reception and waiting area plus a café.

This project was awarded the CIOB, Committed to Construction in Humber & West Yorkshire, Project of the Year Award 2016.



M&E Design

SDA were involved in developing the brief for the project with the end users following an initial feasibility exercise carried out by the architectural team. As part of our remit, we undertook discussions with many different stakeholders from the Trust and workshop exercises to discuss individual stakeholders' requirements and to present proposals to the varying stakeholders.

SDA then progressed the design of the project through the various work stages to achieve a completed design, together with documentation to allow the mechanical and electrical services to be competitively priced in accordance with the NHS P21+ framework requirements. SDA were subsequently appointed to advise Interserve on the works by their sub-contractors during the period on site, and to assist with further design development as the scheme progressed through the construction phase. The building was designed to meet the needs of multiple service users and also to address local authority requirements for renewable energy targets. As part of our works, we undertook feasibility works to investigate the potential to connect to a planned local district heating network, although this was not considered viable by the Trust. We also carried out a low carbon energy study to identify the optimum approach to meet the local authority requirements.

Further Project Examples



New Cataracts Centre – Sheffield Teaching Hospitals NHS Foundation Trust



Doncaster Ambulance Station – South Yorkshire Ambulance Service



Angiography Suite – Kings Mill Hospital



Operating theatres Refurbishments - Multiple Hospital sites



Linear Accelerator - Weston Park Hospital



St Luke's Hospice - Sheffield

Healthcare Experience

- ❖ Backlog Maintenance – Nottingham University Hospitals NHS Trust
- ❖ New MRI Suite, Diana Princess of Wales Hospital - Northern Lincolnshire & Goole Hospitals NHS Foundation Trust
- ❖ New CT Scanner Suite, Diana Princess of Wales Hospital - Northern Lincolnshire & Goole Hospitals NHS Foundation Trust
- ❖ New Doncaster Hub – Yorkshire Ambulance NHS Trust
- ❖ Electrical Infrastructure Works – Doncaster & Bassetlaw Hospitals NHS Foundation Trust
- ❖ Westminster House Heating Upgrade – Nottinghamshire Healthcare NHS Foundation Trust
- ❖ Walsall Manor Hospital – Urgent Care Centre Alterations – Skanska
- ❖ Theatre Ventilation Refurbishments (Grimsby, Scunthorpe & Goole) - Northern Lincolnshire & Goole Hospitals NHS Foundation Trust
- ❖ Newark Breast Screening Unit – Sherwood Forest Hospitals NHS Foundation Trust
- ❖ Child Assessment Unit Relocation – Sheffield Children’s NHS Trust
- ❖ New Aseptic Suite – Doncaster & Bassetlaw Hospitals NHS Foundation Trust
- ❖ CT Suite, Doncaster Royal Infirmary - Doncaster & Bassetlaw Hospitals NHS Foundation Trust
- ❖ Theatre D Redevelopment, Scunthorpe Hospital - Northern Lincolnshire & Goole Hospitals NHS Foundation Trust
- ❖ Theatre E Redevelopment, Scunthorpe Hospital - Northern Lincolnshire & Goole Hospitals NHS Foundation Trust
- ❖ Infectious Diseases Unit, Castle Hill Hospital – Hull University Teaching Hospitals NHS Trust
- ❖ New Oncology Unit – Sheffield Children’s NHS Foundation Trust
- ❖ LA2 Radiotherapy Unit, Lincoln Hospital – United Lincolnshire Hospitals NHS Trust
- ❖ Fire Enforcement Works, Doncaster Royal Infirmary – Doncaster & Bassetlaw Hospitals NHS Foundation Trust
- ❖ Lift Refurbishment, Scunthorpe Hospital – Northern Lincolnshire & Goole Hospitals NHS Foundation Trust
- ❖ Cataract Theatres, Northern General Hospital – Sheffield Teaching Hospitals NHS Foundation Trust
- ❖ North Side Redevelopment, Diana Princess of Wales Hospital - Northern Lincolnshire & Goole Hospitals NHS Foundation Trust

Mental Health Experience

- ❖ Leeds CAMHS – Leeds & York Partnership NHS Foundation Trust / Leeds Community Healthcare NHS Trust
- ❖ St Andrew's Hospital Refurbishment – Nottinghamshire Healthcare NHS Foundation Trust
- ❖ Millbrook Dormitory Eradication – Nottinghamshire Healthcare NHS Foundation Trust
- ❖ Dormitory Elimination Scheme – Leicestershire Partnership NHS Trust
- ❖ Hawthorne House Rehabilitation Unit Redevelopment – Greater Manchester Mental Health NHS Foundation Trust
- ❖ Hopewood CAMHS & Perinatal Unit Engineering NEC Supervisor – Nottinghamshire Healthcare NHS Foundation Trust
- ❖ New Secure Perimeter, Wathwood Hospital RSU – Nottinghamshire Healthcare NHS Foundation Trust
- ❖ Beevor Court Substance Misuse Rehabilitation Unit – Yorkshire Housing Association
- ❖ Badsley Moor Lane Hospital – NHS Rotherham
- ❖ Ward CCTV Roll-Out , Ashworth Hospital – Mersey Care NHS Foundation Trust
- ❖ Secure Perimeter Improvements, Ashworth Hospital – Mersey Care NHS Foundation Trust
- ❖ New Generator Installation, Beech Hill Respite Care Unit – Sheffield Health & Social Care NHS Foundation Trust
- ❖ Pontefract Hub – South West Yorkshire Partnership NHS Foundation Trust
- ❖ East Side Reconfiguration, Ashworth Hospital – Mersey Care NHS Foundation Trust
- ❖ Trust-Wide IT Infrastructure Upgrade – South West Yorkshire Partnership NHS Foundation Trust
- ❖ Gender Separation Project (Mersey Forensic Psychiatry Service) – Mersey Care NHS Foundation Trust
- ❖ Mental Health Ward Refurbishments, Kendray Hospital – South West Yorkshire Partnership NHS Foundation Trust
- ❖ Women's Personality Disorder Unit, Newark – Nottinghamshire Healthcare NHS Foundation Trust
- ❖ MV&A Building, Rampton Hospital – Nottinghamshire Healthcare NHS Foundation Trust
- ❖ St Francis Unit Relocation – Nottinghamshire Healthcare NHS Foundation Trust
- ❖ Boiler Replacement Scheme – Nottinghamshire Healthcare NHS Foundation Trust
- ❖ Wathwood Hospital ICU- Nottinghamshire Healthcare NHS Foundation Trust
- ❖ Ward Nurse Call System Upgrades - Sheffield Health & Social Care NHS Foundation Trust
- ❖ Forest Lodge Rehabilitation Unit - Sheffield Health & Social Care NHS Foundation Trust
- ❖ Non-Secure Accommodation, Fieldhead Hospital - South West Yorkshire Partnership NHS Foundation Trust

Contact Details



Services Design Associates Limited
Building Services Consulting Engineers
Unit 1, Acres Hill Business Park, Acres Hill Lane, Sheffield S9 4LR
Tel: 0114 244 7555 | Fax: 0114 244 6008 | www.sda.co.uk
Email: Info@sda.co.uk

Registered in England No.2280509

Click to follow us
on Twitter



Click to connect
to us on LinkedIn

