

**TODD**

**HEALTHCARE**

# AWARD WINNING HEALTHCARE DESIGN

ROYAL COLLEGE OF PHYSICIANS LONDON | 8-10 JUNE 2020

## EUROPEAN HEALTHCARE DESIGN

RESEARCH • POLICY • PRACTICE

Omagh Hospital and Primary Care Complex  
Healthcare Design (over 20,000sqm) Winner



RIBA, RICS, RIAI  
and Civic Trust Awards

# 40+

Established in

# 1976

Studios

**BELFAST  
LONDON  
DUBLIN**

Wide Sectorial Specialisations

**CIVIC  
COMMERCIAL  
EDUCATION  
HEALTHCARE  
HOSPITALITY  
INFRASTRUCTURE +  
UTILITIES  
LEISURE  
MIXED USE  
RESIDENTIAL  
RETAIL + F&B  
TRANSPORT  
WORKPLACE + INTERIORS**

An AJ100 UK  
Leading Practice

# AJ100

**DESIGN CONSCIOUS  
COMMERCIALLY  
AWARE**



2018 International  
Practice of the Year

Our People

# 70+



**BIM EXPERTISE**





## Introduction

Healthcare design requires a deep understanding of medical planning, operational needs, specific user client aspirations and an appreciation of context and setting.

TODD Architects expertise covers all aspects of:

- i. Medical design ranging from large scale masterplans and estate development strategies to the modest remodelling of existing buildings and;
- ii. Procurement routes such as traditional, Design + Build, Performance Related Partnering (PRP) and Public Private Partnerships (PPP).

The practice has developed close working relationships with knowledge-rich health sector experts. Additionally in-house specialist teams are actively encouraged to expand their knowledge through research programmes, involvement with 'Architects in Health' and other CPD opportunities.

The achievement of a high standard of design quality in a completed building is most directly evidenced in its recognition within independently accredited awards programmes. Our healthcare projects have received a range of awards nationally from professional bodies including the RIBA, RICS, RSUA as well as being cited in the International Healthcare awards.



# Primary Care

A The focus on a 'patient pathway' which establishes a route through the health service - from initial consultation to completion of treatment - has led to the creation of a new model for primary care services, commonly referred to as Health and Well Being Centres or Community Treatment and Care Centres.

A 'one-stop shop', these facilities typically include: GPs, consulting and treatment suites, physiotherapy, paediatrics, dentistry, occupational and speech therapy together with social services such as homecare, primary mental health teams and outsourcing centres.

The latest development of this model of care is at Omagh Hospital & Primary Care Complex which incorporates GP's with its benefit of examination and treatment facilities on site.

The practice has now completed six of these buildings in Northern Ireland and has developed proposals for a similar type of facility for the Health Service Executive and the Alpha Healthcare Group in Killarney.



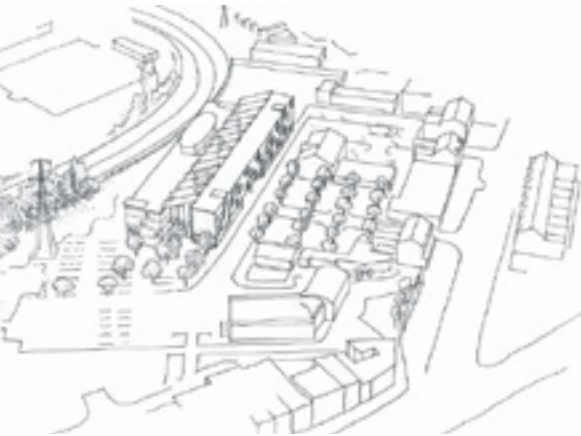




# The Arches Community Treatment & Care Centre, Belfast

The Arches Centre was the first of three Community Treatment and Care Centres delivered for the South & East Belfast Trust. The centre accommodates a wide range of facilities including GP accommodation, a dental department, podiatry and physiotherapy to name but a few. The building is a mixture of new build and extensive refurbishment including the restructuring of existing facilities. The new build section was completed in August 2004, constructed adjacent to the existing building, the space between the two parts forms an atrium which accommodates the main circulation routes and waiting areas. The building has its own unique identity.

Externally it is distinctive by its coloured window patterns whilst internally the spaces arranged around the atrium bring both interest and a sense of activity to staff and patients alike.



**Client**  
South East Belfast HSS Trust  
**Location**  
Holywood Road, Belfast  
**Nature**  
New build and extensive refurbishment  
**Procurement**  
Competitive Interview

Healthcare



# The Bradbury Treatment & Care Centre, Belfast

This Community Treatment and Care Centre is one of three new centres developed by South East Belfast HSS Trust. The other two are located at Hollywood Arches and Castlereagh. TODD Architects and Penoyre & Prasad were selected in competitive interview to design and procure these three schemes. The 4,500 m2 Lisburn Road scheme is located on a brown field site on the edge of the city centre and near to the main Belfast / Dublin railway line. The building volume has been concealed as two parts: a long rectilinear block running parallel to the railway and an organic form which runs between this block and the neighbouring terrace. A central three storey atrium space is located at the junction of these two parts.



**Client**  
Belfast Health & Social Services Trust  
**Location**  
Lisburn Road, Belfast  
**Nature**  
New build primary healthcare facility  
**Procurement**  
Performance Related Partnering

Healthcare





# Knockbreda Treatment & Care Centre, Belfast

The third Community Treatment and Care Centre designed for the South East Belfast HSS Trust sits on a greenfield site located within the grounds of Forster Green Hospital, Belfast. TODD Architects are worked jointly with Penoyre & Prasad in the design and development of this innovative centre which offers a ‘one stop’ approach to delivery of a range of healthcare services.

This scheme is unique in many ways from it’s sister schemes, (Holywood Arches and Lisburn Road), in that it is situated on a steeply sloping greenfield suburban site. The creation of a central atrium and careful selection of materials is common to all three schemes. The centre was completed in 2008 and opened to its local community in 2009. It received RIBA regional award in 2009.



**Client**  
Belfast Health & Social Services Trust  
**Location**  
Belfast  
**Nature**  
New build primary care facility  
**Procurement**  
Performance Related Partnering

Healthcare



Healthcare





# Carlisle Health & Wellbeing Centre, Belfast

The Carlisle Centre houses a number of clinical and social care services for the community, whilst serving as a base for outreach staff teams. Floors are zoned to allow for public and clinical spaces to be located at either ground or first floor, with level access provided at each of these zones due to the level change across the site. The upper floors are accessible by staff only, with open plan office accommodation located at second floor level and the third floor providing a staff dining area with south facing terrace which affords views over the internal courtyard.

The two public entrances are linked by a three storey internal 'street' which acts as the key organisational device and allows views through to the landscaped, stepped, feature garden. The change in level provides spill out areas from inside to out with the external café area at ground floor strategically separated from the children's external play area at first floor. The external envelope has been designed with a view to providing an attractive and striking aesthetic whilst acknowledging the desire for durability of materials and requirement for security which is integral to the design.



**Client**  
Belfast Health & Social Services Trust  
**Location**  
Belfast  
**Nature**  
New build Primary Care Facility  
**Procurement**  
Performance Related Partnering

Healthcare



# Beech Hall Wellbeing & Treatment Centre, Belfast

Beech Hall is one of three new Health and Well Being Centres designed for The Belfast Health and Social Care Trust as the result of a design competition in July 2003, won by TODD in collaboration with London based Architects, Penoyre & Prasad.

Constructed on a steeply sloping green field site on a busy main thoroughfare into Belfast City Centre. The five storey building enhances the streetscape, consisting of two staggered wings allowing for a public block to the front and a staff wing to the rear. The blocks are designed to an optimum width to allow for natural ventilation and cooling. The slope of the site is cleverly utilized to minimize the massing to the street, with the two wings linked by a glazed bridge that connects at second floor level through the tree tops.

The main pedestrian entrance is accessed via Andersonstown Road, giving the building civic presence and improved public accessibility. A ramped terrace provides access to the main reception and allows privacy to the clinical spaces beyond from the footpath. This change in level also allows level access from the car parking tucked away to the rear. The two wings have been designed to have a striking aesthetic. Steps in heights allow for green external areas and further voids in the elevations. The project started on site late 2008 and Opened to the public in April 2011.



**Client**  
Belfast Health & Social Services Trust  
**Location**  
Belfast  
**Nature**  
New build Primary Care Facility  
**Procurement**  
Performance Related Partnering

Healthcare





# Shankill Wellbeing & Treatment Centre

Shankill Road Health and Wellbeing Centre is one of three new centres designed for the Belfast Health and Social Care Trust. The others are Lincoln Avenue and Andersonstown Road, each will serve a population of 70,000. Each Centre will aim to offer a one-stop approach to service delivery by providing a focal point for care within community based centres. The 4,800 m2 scheme will sit between the existing club and church and will have prominent frontage onto Shankill Road. The accommodation will be along an internal street, with an atrium at the heart of the building. The accommodation is organised within 2 linear blocks parallel to the main arterial route of the Shankill Road. The blocks are connected by a glazed internal street which creates two internal courtyards hidden from the street. The project started on site late 2008 and opened to the public in 2011.



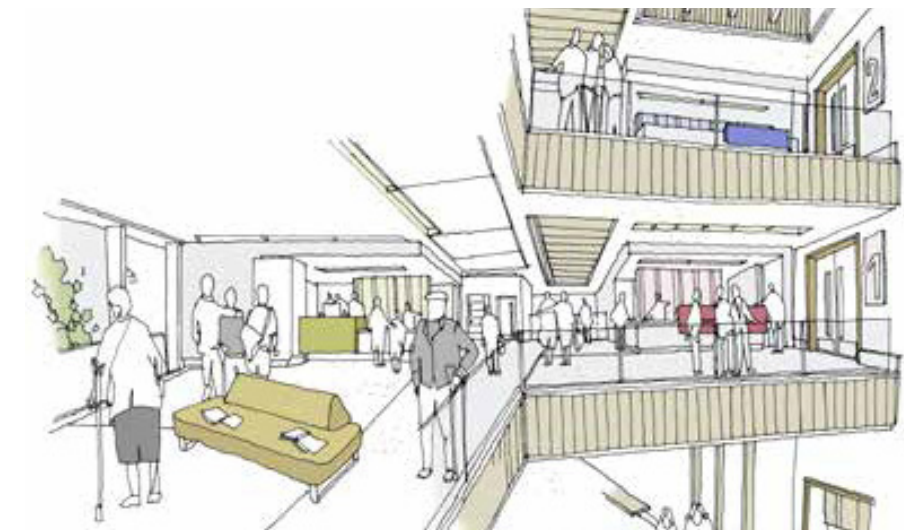
**Client**  
Belfast Health & Social Services Trust  
**Location**  
Belfast  
**Nature**  
New build primary care facility  
**Procurement**  
Performance Related Partnering

Healthcare



Healthcare





# Lisburn Community Treatment & Care Centre

This Scheme was developed as a private development project to deliver primary care.

Situated on an existing hospital campus we developed up a scheme utilising experience gained from it's delivery of various Primary Care complexes.



**Client**  
Private  
**Location**  
Lisburn  
**Nature**  
Primary Care  
**Procurement**  
Design & Build Bid

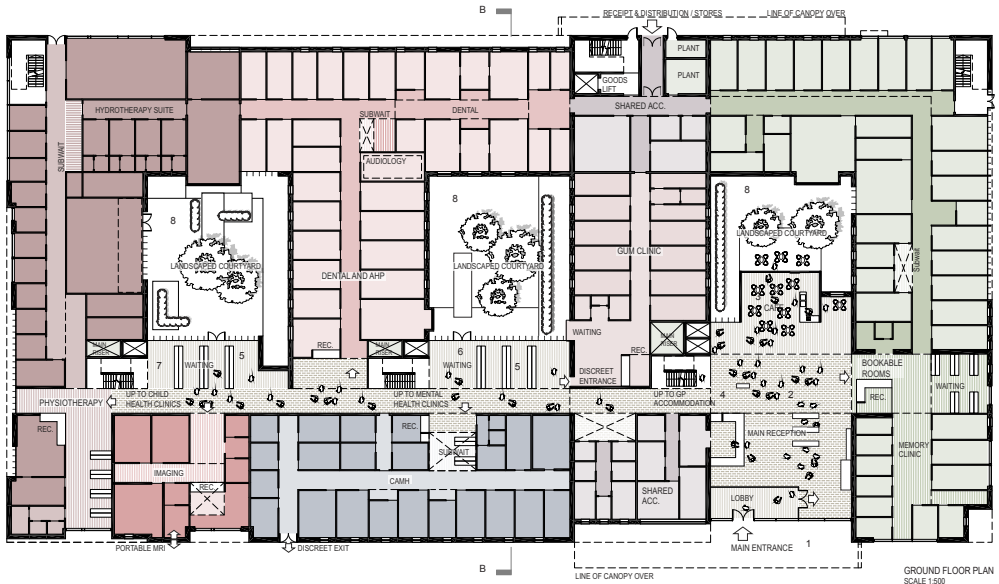




# Newry Community Treatment & Care Centre

This scheme was developed as a private development project to deliver Primary Care.

Situated on a rural site it embraced experience gained as recently completed PCCI projects. High quality design was incorporated with a need for a scheme that offers Operational practicality and efficiency.



**Client**  
Private  
**Location**  
Newry, Co Down  
**Nature**  
Primary Care  
**Procurement**  
Design & Build Bid

Healthcare



Healthcare



# Enhanced Local

Enhanced Local Hospitals are a new model of care built around smaller local hospitals. This model facilitates healthcare in the community, closer to people's homes and integrates the breadth of primary care such as GP's AHP's, Community Nursing, with aspects of secondary care facilities. The types of medical specialties which will be provided include, day procedures, consultant clinics, dialysis, chronic disease management, minor injuries, imaging.

This new way of providing healthcare fits with the strategic direction of healthcare across the UK and we are in a unique position to deliver this innovative building type due to our extensive experience in both primary and acute healthcare facilities.



Omagh Hospital & Primary Care Complex





# Omagh Enhanced Local Hospital

The Omagh Hospital and Primary Care Complex is a model of healthcare provision, unique to Northern Ireland and new for the UK and Ireland in how services are delivered. The hospital was designed to provide new services to help tackle the delivery of healthcare in this rural location and to help tackle waiting lists across Northern Ireland. The scheme provides a range of secondary and tertiary hospital facility alongside community healthcare services in one place.

This project was designed in response to a series of quite specific requirements that exist in this region and location. Whilst not unique to Northern Ireland the project has made a significant positive contribution to the local and strategic vision in transforming the delivery of care in this region. The project acknowledges it's rural setting and delivers

efficient care by having carefully considered and appropriate scaled co-location of services.

The scheme supports the region's speciality centres and relieves pressure on the wider system by acting with a regional 'step-down' and 'support' role with a community based healthcare focus. The project includes urgent care and treatment, coupled with local 'state of the art' assessment, day procedure and out-patient's departments, all integrated in a building with the general practitioners.

The building balances the technically demanding requirements of a healthcare building whilst delivering a high quality architectural response that includes innovation in the model of care and excellence in building design and building quality in a sensitive rural setting.



**Client**  
Health Estates Investment Group  
**Location**  
Omagh, Co Tyrone  
**Nature**  
Newbuild hospital and primary care complex  
**Procurement**  
Traditional

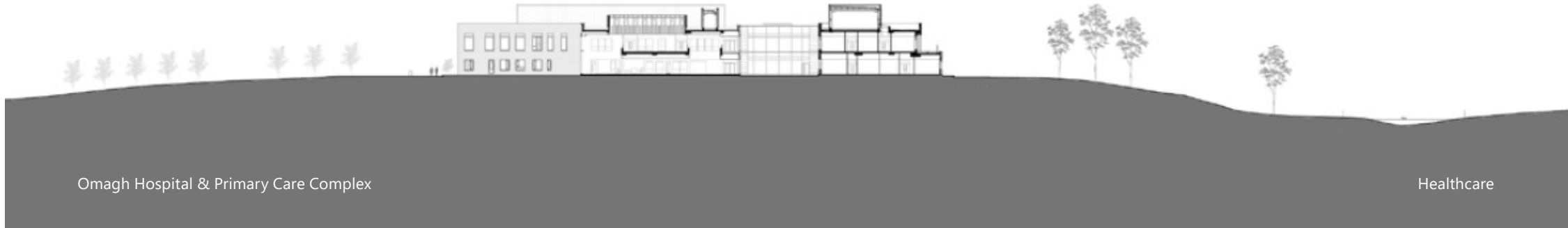
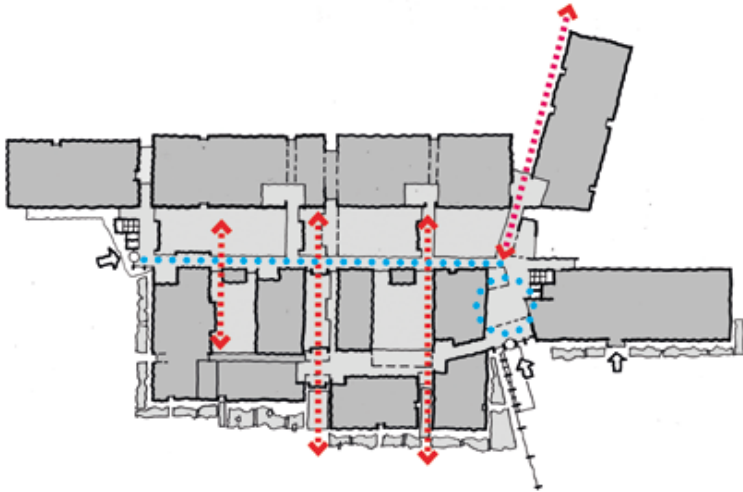


The building sits on a green field site on the outskirts of the town and replaces the 118 year old Tyrone County Hospital. A number of physical site constraints have defined the development, the adjacent hospital, the River Drumragh, a new link road and the Donaghane Road. Visual prominence was a key influence, balancing the desire to showcase the new building and engender an appropriate level of civic pride and prominence whilst not being out of scale with context.

Architecturally the scheme has been conceived with vernacular influences particularly in the approach to the overall scale and mass where the various key components have been grouped into defined and legible elements, linked with light glazed enclosed links; a connecting 'street' and a main 'atrium/foyer' space.

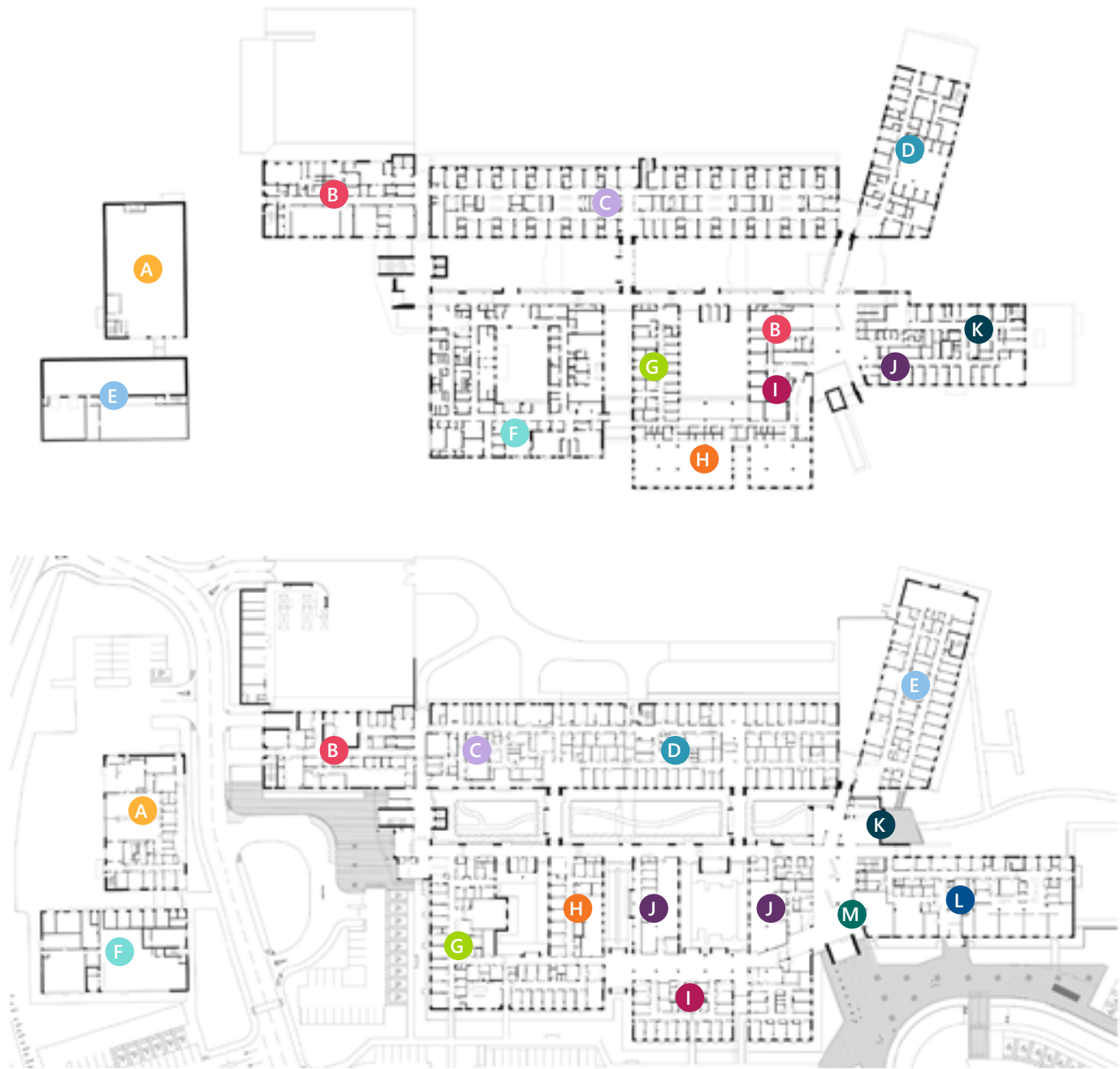
Employing a mix of two and three storey elements, the scheme follows a predominantly linear configuration, along and around a central courtyard and connecting 'street'. The departments are modelled as a series of 'pavilions', each consciously articulated to define its use and aid legibility within the overall building. This approach visually reduces the mass and scale assists in the overall articulation and in turn enables a range of views 'to', 'from' and 'between' the main blocks to the internal landscaped courtyards and beyond to the external surroundings, enhancing the user and visitor experience.

Through considered design a therapeutic environment has been created for all users, both inside and outside the building.





Case Study  
Enhanced Local



First Floor

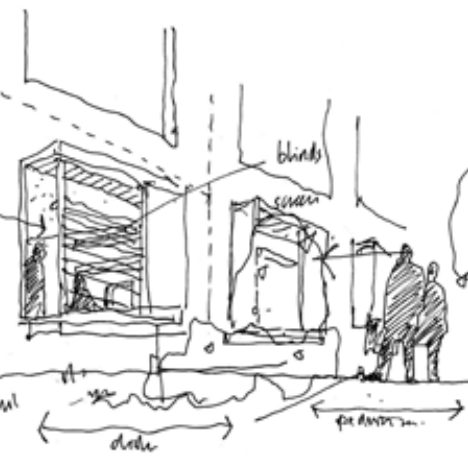
- A HSDU
- B Support
- C Wards
- D Allied Health Professionals
- E Energy Centre
- F Day Procedures
- G Mental Health Services
- H Shared Working
- I Dental Department
- J Podiatry
- K Woman's & Family Health

Ground Floor

- A HSDU
- B Pharmacy/Distribution
- C X-Ray (Radiology)
- D Outpatients
- E Children's Department
- F Energy Centre
- G Urgent Care & Treatment
- H Clinical Care Centre
- I GP Practice
- J Support
- K Cafe
- L Renal Department
- M Community Pharmacy
- N Retail Shop

Healthcare

Case Study  
Enhanced Local



Healthcare





The hospital departments are arranged around two key public entrances, the 'main' entrance at the Foyer and main reception and 'secondary' entrance, located adjacent the Urgent Care. The main entrances are connected by a 'hospital' street' on two levels with courtyards and link corridors which both connect and define the adjacent spaces.

The design approach of a series of legible building elements connected by a 'street' and 'foyer' assists in the way-finding and orientation (a design parameter) to and within the scheme; this principle is further extended to the individual departments.

All areas are accessible from either of the entrances. During the day it is envisaged that the majority of visitors will arrive at the main entrance; where the main reception/ information point, café, retail and waiting are located, around what is an active space, with a range of spaces of differing height, functions and views.



Healthcare



Omagh Hospital & Primary Care Complex

Healthcare



Case Study  
Enhanced Local



The distinction between 'inside and outside' is being strengthened with the physical landscaping and visual links being extended from the site into and through the building 'breaks', in turn re-in forcing the definition of the 'pavilions'.

The courtyards assist in the building orientation as an extension of internal space to the exterior and improving the overall sense of well-being; providing opportunities of overlooking from adjacent waiting spaces and from the hospital street.



Healthcare

Case Study  
Enhanced Local

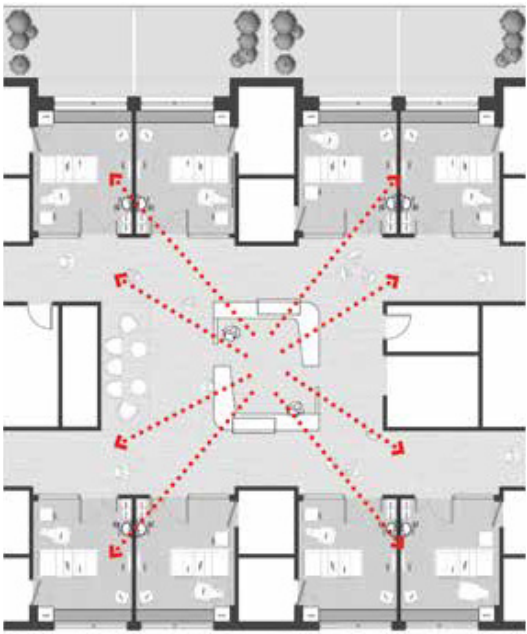


The interiors have a range of spaces that maximise the benefit of natural light and views into courtyards and over the surrounding rivers and mountains.

Ward areas contain single en-suite rooms for a mix of patients in recovery and rehabilitation as well as patients receiving palliative care. The wards are arranged in clusters of ten rooms around a central ward base.

The approach to the design has carefully considered the balance of patient observation with privacy and the ability to have staff and patient control to suit a range of scenarios.

Departments have been designed to break down the barriers between traditional clinical and patient areas by introducing seating/ break out areas that encourage a sense of community to create a relaxed healing environment.



Healthcare



"The OH and PCC is a bright, spacious, and uplifting new building. Patients are seeing the benefits in having all hospital based services in the same location as their local GP.

There is a real sense of excitement in the building, the feel good factor has well and truly returned to Omagh!"

**Dr Duncan Motherwell,  
GP, Drumragh Practice**



# Acute

Hospitals are amongst the most complex of building types, their design driven by multi-layered briefs, and demanding operational policies, necessitating knowledge of present and predicted clinical provision.

Pragmatic concerns must be balanced with a desire to create, environments which inherently make people feel better. It is this principle that guides our practices philosophy in the sector.

Each of our solutions responds to the specific brief, client aspirations and context, lifting them above the norm. 'In between spaces' – often not specifically identified within accommodation schedules characterise many of our design responses.





# Emergency Medical Ward, Antrim Area Hospital

This Emergency Department has been deisigned and procured to meet a Fast Track Programme and will cater for 90,000 attendees per year with 27 treatment /assessment rooms, 5 bay resuscitation rooms and associated 18 bed assessment unit. The department will be fully integrated and linked to the existing hospital and has also been designed to meet current standards with separated minor and major/ adult and paediatric patient flows. It includes new X-ray rooms and a CT scanner unit. The project incorporates a new 24 bed medical ward located above the new emergency department, designed with 100% single bedrooms.



**Client**  
Northern Health & Social Care Trust  
**Location**  
Co Antrim  
**Nature**  
New-build extension and refurbishment of existing Accident & Emergency Unit providing: Treatment /assessment units, resuscitation rooms, X-ray, CT scanner and new medical ward  
**Procurement**  
Traditional







# Blossom Children & Young People's Centre

The new paediatric ward; Blossom Children & Young People's Centre is the first building project complete in a proposed phased master plan development for the Craigavon Area Hospital site.

The ward is a stand-alone building, generally single storey in height with plant accommodation sited above the south westerly block forming a two story folded roof element creating height and scale wrapping over the double height main entrance foyer area giving the building form and character. The design addresses the issues associated with the short term integration with the existing hospital as well as the longer term aspiration and consideration for the Masterplan.

The departments within the paediatric unit are arranged around the main entrance foyer which is the main point of public access to the building. A central entrance canopy formed from the folding roof provides a sheltered area for clients and visitors arriving to the building, and creates a focus point with visual links to through to the courtyards behind the reception.



**Client**  
Southern Health & Social Care Trust  
**Location**  
Craigavon  
**Nature**  
Newbuild Peadiatrics Centre  
**Procurement**  
Traditional



# Blossom Children & Young People's Centre







# Daisy Hill Paediatric Centre of Excellence

The Daisy Hill Paediatric Centre of Excellence is a model of the “Changing for Children” strategy, developed through public consultation. The Centre is located on the 6th floor in the existing 1970’s Daisy Hill Hospital. The ambition of this project is to create a fresh, colourful, comfortable facility which is welcoming, playful and makes efficiencies in the service delivered whilst safe guarding the patients and staff.

Occupying the entire footprint of the 6th floor the new paediatric centre is comprised of an operating theatre, ambulatory care ward and in-patient ward.

Plant accommodation has been provided at roof level to serve the new centre.

- The building planning and layout have been developed to address a number of particular considerations:
- ‘Observation’ - staff base clusters coupled with single bed wards to balance observation with potential for user dignity,
  - ‘Wayfinding’ - through the department, enabled by its planning,
  - ‘Linkages to exterior’ - visual linkages to the outside environment which allow the patient to engage with their environment
  - ‘Staff and FM in discrete locations’ – local convenient staff areas.
  - ‘Enabling Works’ - In order to allow the construction works to begin on the 6th floor the current services operating from this floor require to be decanted.



**Client**  
Southern Health and Social Care Trust  
**Location**  
Daisy Hill Hospital, Newry  
**Nature**  
Refurbished 6th Floor for New Paediatric Centre  
**Procurement**  
Traditional

7th Floor - Extended Plant Room

6th Floor - Refurbished for New Paediatric Centre

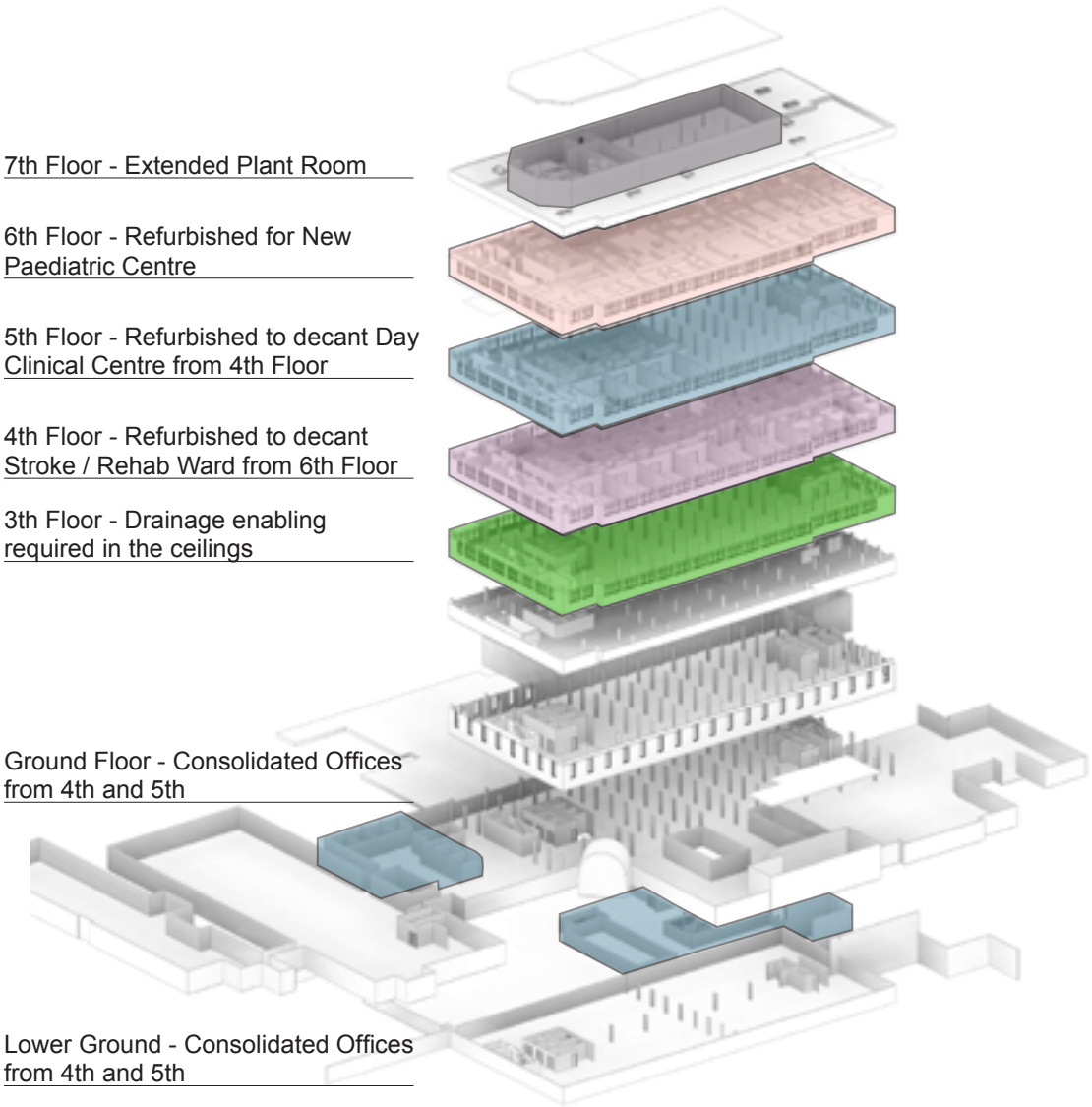
5th Floor - Refurbished to decant Day Clinical Centre from 4th Floor

4th Floor - Refurbished to decant Stroke / Rehab Ward from 6th Floor

3rd Floor - Drainage enabling required in the ceilings

Ground Floor - Consolidated Offices from 4th and 5th

Lower Ground - Consolidated Offices from 4th and 5th



The enabling and decanting aspect required a detailed and strict sequence of moves to clear the 6th floor ahead of the works commencing. 105 separate tasks illustrating client or contractor responsibility with specified time periods allocated to each task was developed with the relevant stake holders. The enabling and decant affected multiple departments, consultants and administrative staff across the hospital estate. Within the main building alone, works were carried out to the lower ground, ground, 3rd, 4th and 5th floors before the main works progressing on the 6th floor.







# Royal Belfast Hospital for Sick Children

The project was awarded as the result of winning a design competition in which 6 teams were short-listed and requested to submit scheme designs. TODD Architects, as lead consultant of the winning team, were not only responsible for the design but for the co-ordination of all consultant disciplines and were charged with ensuring the scheme was completed on time and within budget. The management of this complex project involved close liaison with representatives of both user and client bodies and the direction of the other consultants on the design team. The hospital was awarded the Liam McCormick Award in the RSUA Design Awards 2000.



**Client**  
Royal Group of Hospitals Trust  
**Location**  
Belfast  
**Nature**  
Provision of new A&E, ICU, outpatient and operating theatre departments and new hospital entrance, in a congested and restricted urban hospital complex  
**Procurement**  
Traditional



# Letterkenny General Hospital

A major 4 storey development containing a ground level Emergency Dept and Medical Assessment Unit and 3 upper floors of medical wards. The ED has been designed to latest medical planning principles with separate streams for minor, major and paediatric patients, to serve up to 40,000 attendances per year. The MAU contains patient assessment & examination facilities, finishing in close association with the ED. The ED and MAU contain a full range of patient treatment and examination facilities - treatment rooms, consult / exam rooms, mental health / psychology services, ophthalmology treatment, gynae treatment, paediatric treatment and support and general purpose X-ray. The department maximises the benefits of natural light to all clinical areas, along with good staff observations. Circulation is designed with a clear and coherent layout, and efficient flows between waiting, sub waiting and treatment and assessment areas, as well as good separation of critically ill patients. High standards of interior design and effective wayfinding have been achieved.

The project required a new road entrance, internal ward network and car parking, as well as construction of other ancillary buildings required to maintain continuity of service on the site (energy centre, hospital waste building, and mortuary chapel). The project was procured and administered using the Public Works Contract, including additional administration services following the liquidation of the main contractor.



**Client**  
Health Service Executive, North West Area  
**Location**  
Letterkenny  
**Nature**  
New medical building including emergency department, medical assessment unit and medical wards  
**Procurement**  
Traditional





# Maternity Unit, Ulster Hospital

Secured following a competitive interview process, this commission replaces the somewhat dated existing hospital maternity unit, with a new state of the art facility, incorporating outpatients departments, delivery suites, special baby unit, wards and home from home suites. A costed option appraisal study examined various redevelopment configurations, with a new-build, stand alone building being the preferred arrangement.

The project developed along aesthetic guidelines established within a design guide for the entire hospital complex, also prepared by the practice.



**Client**  
Ulster Community & Hospitals Trust

**Location**  
Dundonald

**Nature**  
Provision of a new maternity unit to replace existing facility in functioning hospital site

**Procurement**  
Performance Related Partnering



# Critical Care Complex, Ulster Hospital, Dundonald

TODD Architects were appointed following a competitive interview process as Lead Consultant and Architect for the delivery of the Critical Care Complex at Ulster Hospital in Dundonald. The development includes provision of new theatres, recovery suite, intensive care unit, high dependency unit, CSSD, laboratories and administrative facilities. The state of the art building and facilities is compliant with the highest standards for such a development and increases the number of theatres, recovery beds whilst improving the through flow of patients and staff facilities.

The complex has been designed to allow for future expansion and expected increase in demand for services over the next 15 years. The building extends over four principle floors, with the two lower levels covering much of footprint of the somewhat confined site, with the upper levels split into two wings, divided by a landscaped courtyard that introduces natural light into the depth of the plan. Externally the restrained palette of materials established by the practice to direct future development in the hospital is, further articulated by projecting zinc clad elements that identify the theatres within the building.



**Client**  
South Eastern Health & Social Care Trust

**Location**  
Dundonald

**Nature**  
Operating theatres, intensive care, laboratories, sterile supplies, endoscopy

**Procurement**  
Performance Related Partnering





# Mater Hospital Redevelopment

The design of the hospital evolved out of the need to rationalise and clarify prevailing access and circulation confusion created by the presence of diverse building forms and locations and vehicular inaccessibility. Lack of site area, the presence of listed buildings and the need for the new ward accommodation to be near existing operating theatres imposed further demands and disciplines of the design development.

The redevelopment content includes: 150 Bed Wards; Day procedures unit; Physiotherapy unit; and Administration accommodation. All serviced by a new entrance and atrium reception area which introduces a homogenising element to the otherwise disparate building forms.



**Client**  
Mater Infirmerum Hospital Trust  
**Location**  
Belfast  
**Nature**  
Conversion and restructuring of existing listed buildings and erection of new buildings to provide a new 150 bed hospital  
**Procurement**  
Traditional



# New Pharmacy Aseptic Suite, Craigavon Area Hospital

Designed by TODD Architects, the opening of the new £3.37m Aseptic Suite marks the second phase completion of the planned redevelopment programme at the Craigavon Area Hospital campus.

Located in front of the Macmillan Building, the two-storey state of the art unit will be used for preparing and dispensing highly specialised medications such as chemotherapy.

The new suite replaces the previous modular structure attached to the Pharmacy Department and houses a counselling room where the team can give confidential support and advice to cancer patients about their medication. It will be named the McWilliam Suite in memory of a highly respected pharmacy colleague, Gillian McWilliams, who sadly passed away from cancer.



‘Our pharmacy, oncology and haematology teams work closely to ensure that we are continually improving services so that patients can receive the best possible care.

Preparation of specialist medications like chemotherapy require great expertise, in particularly controlled environmental conditions. We are absolutely delighted that patients in the Mandeville Unit can receive their treatments much more quickly now that our new unit is situated close beside.”

**Dr Tracey Boyce, Director of Pharmacy  
Southern Health and Social Care Trust**



**Client**  
Southern Health & Social Care Trust  
**Location**  
Craigavon  
**Nature**  
Laboratory  
**Procurement**  
Framework





# South West Acute Hospital

The practice was appointed with local architects Hall Black Douglas and health planners Watkins Gray International, following a competitive interview process to prepare an exemplar design for a new £250m major acute hospital for the south west of Northern Ireland. With procurement proceeding under a PFI contract, this exemplar approach was introduced by the commissioning bodies both with a view to increasing design quality, whilst also reducing bidding costs.

Approximately 60,000sqm the new hospital is located on the outskirts of Enniskillen Down on a sensitive green-field site over looking Lough Wolf. The project incorporates a full range of facilities required in a modern acute hospital.

Full accident and emergency services, imaging, theatres, various ward and a host of out-patient facilities are included, designed to integrate into the countryside and benefit from the views to both the hills and lake. The design and procurement has proceeded through government review and PFI processes.



**Client**  
Western Health & Social Care Trust  
**Location**  
Enniskillen, Co Fermanagh  
**Nature**  
Preparation of exemplar design for major acute hospital prior to procurement through PFI process  
**Procurement**  
PFI



# Altnagelvin Area Hospital

The project was awarded on the basis of interview and fee submission. TODD Architects were not only responsible for the design but for the coordination of all consultant disciplines and were charged with ensuring the scheme is completed on time and within budget. The management of this complex project involved close liaison with representatives of both user and client bodies and the direction of the other consultants on the design team.

The built form combines low slung single and two storey elements, clad in white self-coloured panels with ribbon glazing, with a shallow pitched facsimile copper standing seem roof above - developing, enlivening the somewhat drab architecture of previous development phases.



**Client**  
Altnagelvin Area Hospitals Health & Social Services Trust  
**Location**  
Londonderry  
**Nature**  
New-build extension and refurbishment of existing hospital providing: Outpatients, day surgery, medical, imaging, ICU, operating theatres, administration, HSDU, health records  
**Procurement**  
Traditional





# Sulaiman Al Rajhi Teaching Hospital

TODD Architects were engaged from inception through to the detailed design of this university teaching hospital near Riyadh. The Hospital is located in the overall 118 hectare Al Rajhi College Campus, and is fully integrated with the adjacent medical college buildings which are currently under construction. A site area of eight hectares will be used for the new Hospital Complex which will include associated support and engineering services facilities.

The hospital will initially be designed with a total capacity of 300 beds, with the ability to expand to 50 beds, and a total building area of 187,000m<sup>2</sup> including basements, including a full range of emergency and planned acute healthcare facilities to serve the Al Bukairiah region, working in conjunction with the adjacent Al Rajhi Medical College.

Designed to the best of current international health planning principles to achieve effective managed clinical pathways for patients within a welcoming and patient friendly acute healthcare environment. The building design is required to respond to the regional climate and cultural influences to create high quality public and private spaces with emphasis on sustainable design and construction principles to achieve LEED platinum status.

TODD Architects role involved collaboration with the end users and stakeholders in developing the healthcare planning. This scheme is being advanced to construction stage at present.



**Client**  
Al Rajhi College  
**Location**  
Riyadh, UAE  
**Nature**  
University Teaching Hospital  
**Procurement**  
N/A





# Frameworks

## Case Study Frameworks



## Craigavon Area Hospital, Redevelopment & Masterplan

In 2014, TODD Architects secured the appointment for the framework to redevelop most of the Hospital Campus and input to inform the business case and Redevelopment Proposals. The hospital is a regionally significant acute hospital with an extensive range of departments and services including:

- Primary Care
- Ambulatory Care
- Chronic Disease Management
- Acute/Intensive Care

We have developed initial proposals for a new hospital building and site Masterplan for the redevelopment of the building, which is planned in a number of phases. Our role has required extensive engagement with clinicians and end users to develop the Masterplan proposal. It can be delivered to suit the new and envisaged vision for delivery of healthcare provision at this site.

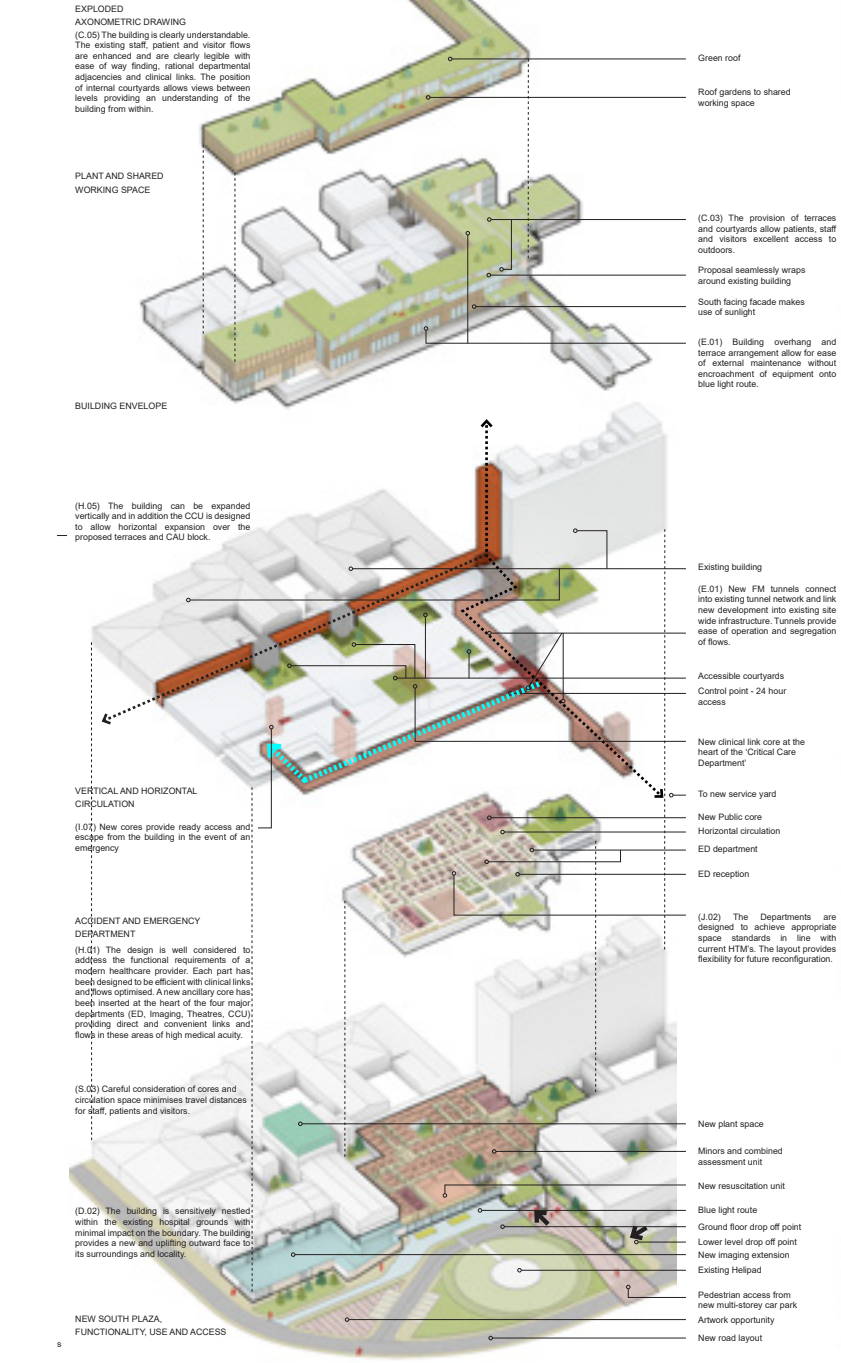
Departments include: Children's Wards; Theatres; Intensive Care Unit; Critical Care Wards; Day Procedure Units; Cancer Care; Care for the Elderly; Surgical Wards; Medical Wards; and Support Accommodation such as CSSD, Laundry, Energy Centre etc.



**Client**  
Southern Health & Social Care Trust  
**Location**  
Craigavon, Co. Armagh  
**Nature**  
Masterplan  
**Procurement**  
Traditional



Case Study Frameworks



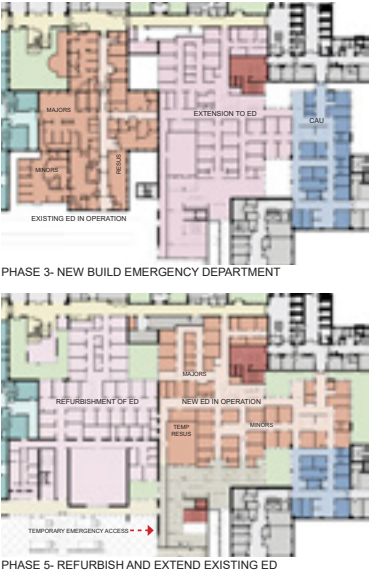
Capital Development Framework at the Altnagelvin Hospital

We are appointed as Architects, Lead Consultant and Economic Operators for the Capital Development Framework at the Altnagelvin Hospital for the Western Health and Social Care Trust.

Our team was selected following success in a Competitive Design Process.

The existing buildings on the Altnagelvin site have continually developed over several years with buildings with the design approach appropriate to their period of construction. Our approach to the project brief was to maintain and enhance this logical plan and introduce additional landscaped courtyards with access provided to external areas for patients and staff.

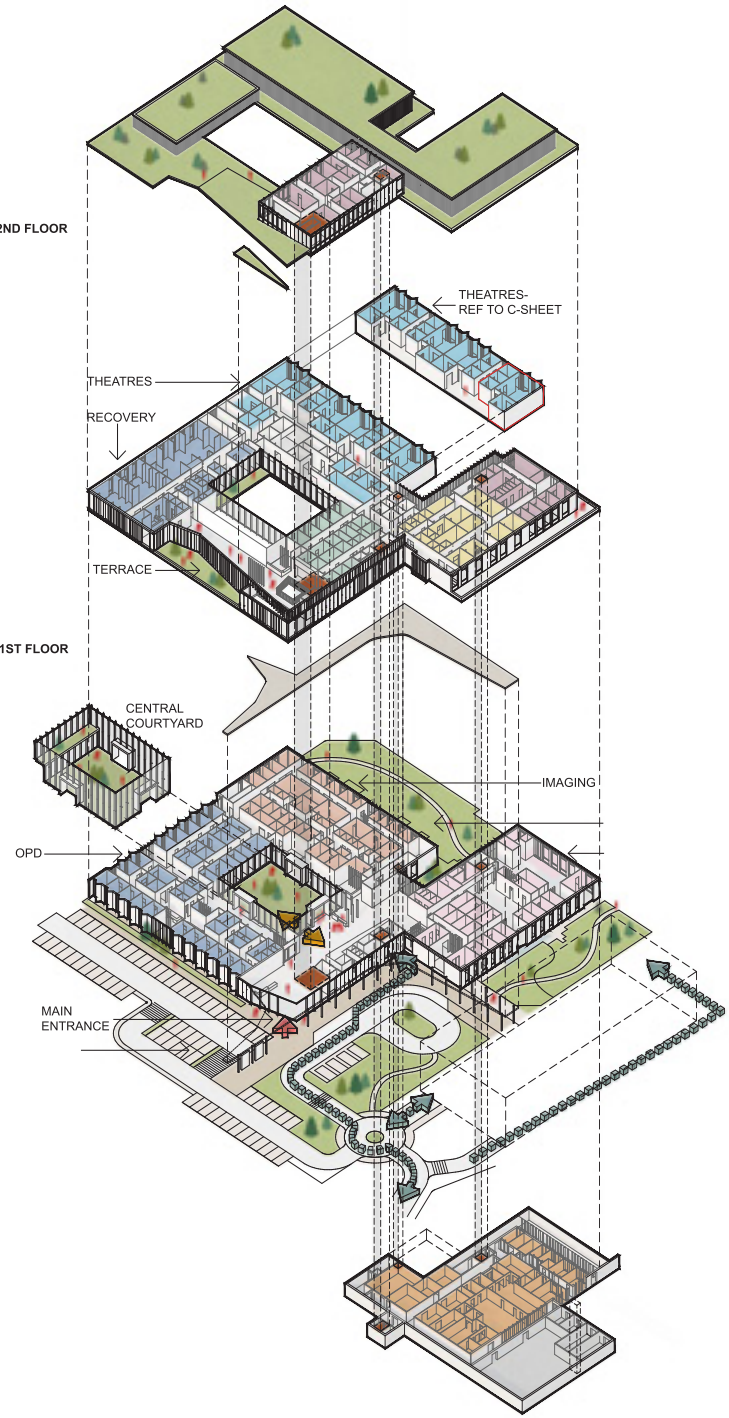
Our aim is to knit the new building into the fabric of the existing hospital buildings whilst ensuring that emphasis is placed on high quality design to provide a new 'statement building' on the site.



**Client**  
Western Health and Social Care Trust  
**Location**  
Altnagelvin Hospital, Derry/Londonderry  
**Nature**  
Major Works ICT Framework  
**Procurement**  
Traditional

Healthcare

Case Study Framework



Belfast Health & Social Care Trust

Our team was selected following success in a Competitive Design Process. We used our extensive experience of designing and delivering healthcare projects on busy, live hospital sites and we are aware of the complexities and challenges posed, while understanding the need to maintain the operation of critical services.

Our initial approach to the Mater Hospital project was to review and understand the constraints and opportunities presented by site conditions and the briefing documentation and to formulate a 'final' approach which can be safely and efficiently constructed in a phased and sequential manner, with minimum disruption to the existing hospital.

The solution for the new Ambulatory Elective Day Procedure and Endoscopy Centre is deserving of a 'landmark' building which is functionally driven in terms of clinical adjacency and patient, visitor and staff experience whilst providing an environment which will uplift the spirits and aid wellbeing and recovery.

Our proposal is a dynamic response to the internal functional and operational requirements of the new facility. In our interpretation of the brief and the SoA, we identified efficiencies in terms of patient flows and staffing utilisation.



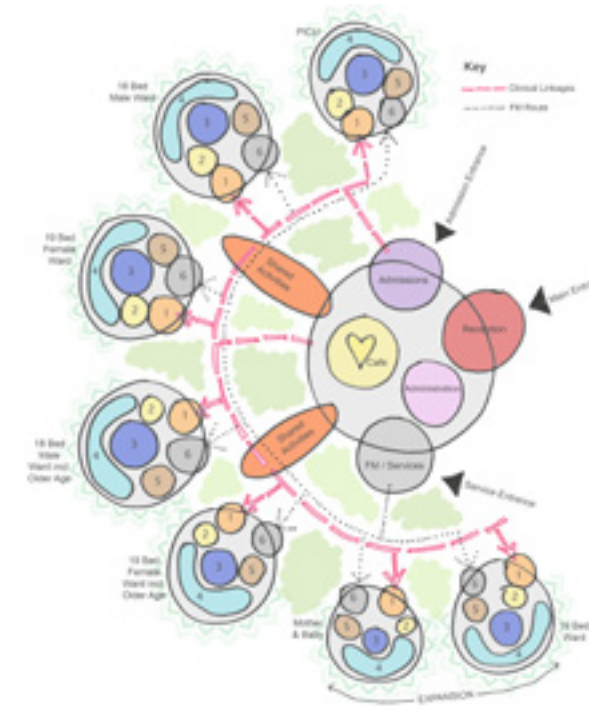
**Client**  
Belfast Health and Social Care Trust  
**Location**  
Crumlin Road, Belfast  
**Nature**  
Major Works ICT Framework  
**Procurement**  
Traditional

Healthcare



# Mental Health & Elderly Care

## Case Study Frameworks



# Mental Health Unit Competition Proposal, Belfast City Hospital

This scheme was submitted as selected design competition for the Belfast Trust. The scheme on a 'Live' hospital site was based around a series of landscaped courtyards. The project had a series of new profiles but all spaces carefully integrated requirements for patient safety, dignity in a contemporary design embracing current best practice in mental health design.



**Client**  
Belfast Health and Social Care Trust

**Location**  
City Hospital, Belfast

**Nature**  
Competition

**Procurement**  
N/A





# Kings Hall Heathcare Campus

TODD Architects are working on a suburban city redevelopment site with Benmore Octopus for a new 68,424 sqm healthcare campus on the former Kings Hall landmark site, which will be sensitively transformed into quality accommodation for a range of primary health care services (GP's, pharmacies, audiologists and opticians).

The masterplan scheme will include a primary care complex, a hotel, a private medical centre, residential care, a multi-storey car parking and retail.

Our prime ambition is to preserve the heritage of the iconic building, and deliver healthcare led regeneration that delivers a new landmark for Northern Ireland's healthcare.



**Client**  
Benmore Octopus  
**Location**  
Kings Hall, Belfast  
**Nature**  
Newbuild healthcare facility as part of major healthcare masterplan scheme  
**Procurement**  
Traditional

Healthcare

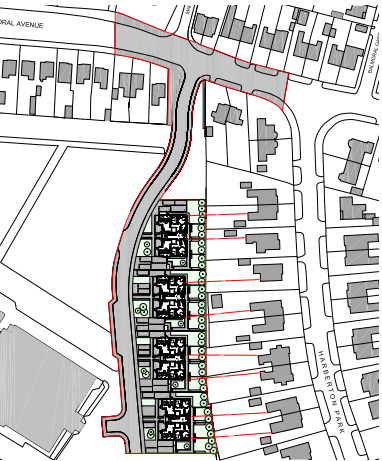


# Kings Hall Over 55s Residential Scheme

TODD Architects have developed a retirement living component as part of the wider Kings Hall Health Village.

Located in the heart of the residential area of South Belfast.

The scheme is designed to suit those wishing to downsize and advail of potential onsite facilities and other care services that are proposed on the campus.



**Client**  
Benmore Octopus  
**Location**  
Kings Hall, Belfast  
**Nature**  
Newbuild healthcare facility as part of major healthcare masterplan scheme  
**Procurement**  
Traditional

Healthcare





# Kings Hall Residential Care Unit

TODD Architects were appointed by the Macklin Group to design their latest care home.

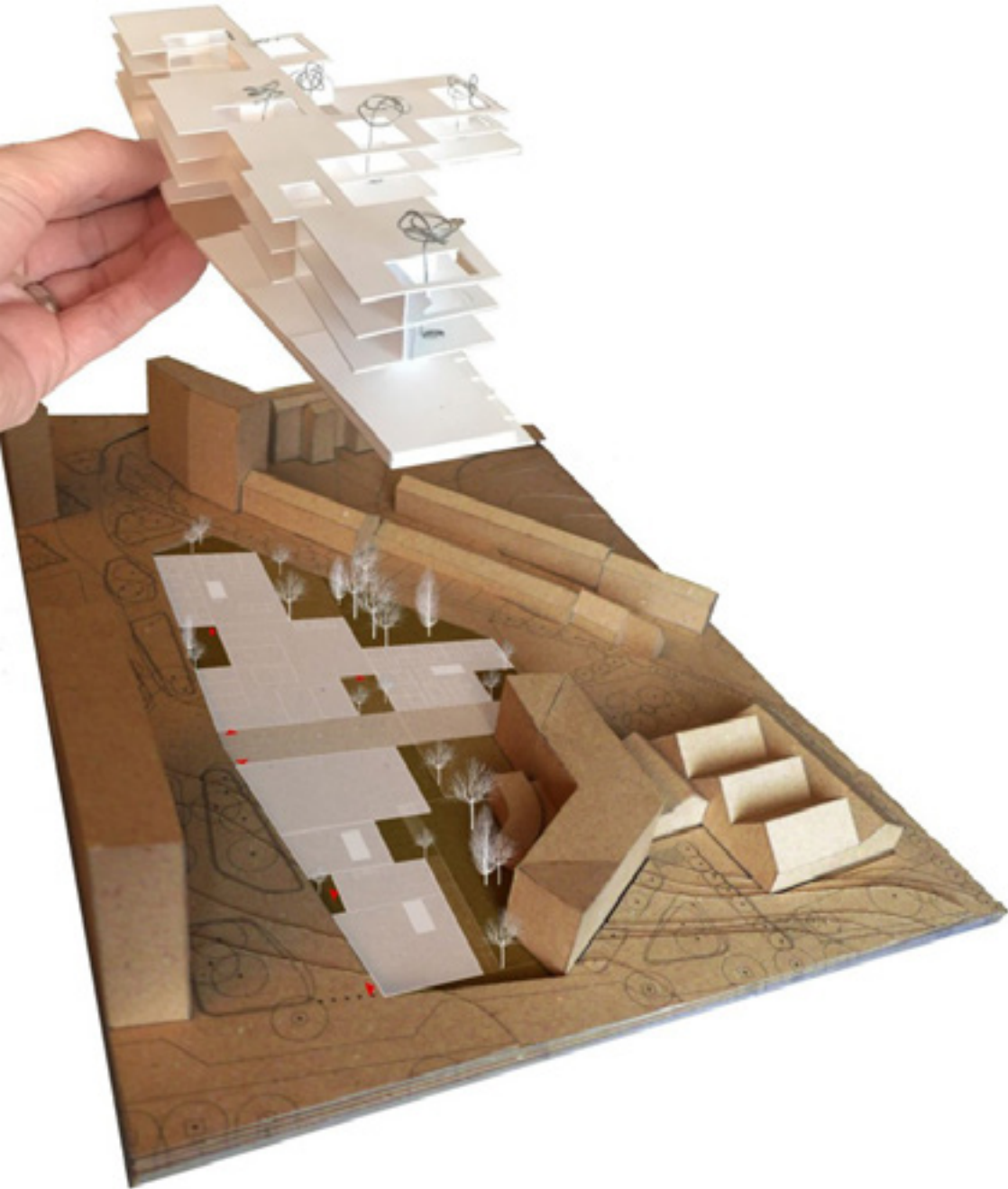
The Building comprises 110 bedrooms, a community unit, providing a range of care options including:

- Residential Care
- Nursing Care
- Respite Care
- Dementia Care

The scheme is currently in planning with the construction programmed to commence in Summer 2020.



**Client**  
Macklin Group  
**Location**  
Kings Hall Belfast  
**Nature**  
Care home with special dementia unit  
**Procurement**  
Traditional



# Grangegorman, Neighbourhood Dublin

TODD Architects are working with McCullough Mulvin Architects to design and deliver the modern & high-quality community focused healthcare scheme for the Health Service Executive (HSE) and Grangegorman Development Agency.

The design intends to break down the institutional feeling of residential care and create a person-centred approach through the creation of 'households' within a 'neighbourhood', focusing on the living room, the dining room, the kitchen and the relationship to outdoor space. It is intended that The Teaghlach Model (Family-Style Model) is the driver which informs this approach.



- Accommodation will include:
- Residential Household Facility (Mental Health) - 12 no. beds
  - Residential Care Centre - 3 x 25 no. bed 'households'
  - Dementia Care 'Household' - 20 no. beds
  - Therapy Centre
  - Day Care Centre
  - 'Retail' Community Pharmacy
  - Administration Offices
  - Support and ancillary accommodation
  - Basement parking for 60 no. cars



**Client**  
HSE & Grangegorman Development Agency  
**Location**  
Grangegorman Dublin 7  
**Nature**  
Newbuild 10, 891sqm residential care scheme  
**Procurement**  
Design & Build



# Rathview Mental Health Facility

Located on a greenfield historic site on the outskirts of Omagh, Rathview Mental Health Facility scheme reflects vernacular influences, particularly in the approach to the overall scale and mass with various key components grouped into defined, legible elements.

The building is divided into two distinct areas; a twelve-bed Discharge Unit and a six-bed Recovery Unit, each arranged around individual courtyards. The development includes a central entrance canopy, car-parking and a service access for waste disposal and gas delivery.

The arrival canopy serves as a sheltered area for clients and visitors and a focal link to the two courtyards either side, with a physical link to the courtyard adjacent to the discharge apartments.

The main elements of accommodation are linked by flat roofed single storey circulation spaces. These areas act as the social and connecting spaces between the rooms. As a result of their physical and visual lightweight nature they afford views to and between the internal courtyards and beyond to the landscape and external spaces. The overall height is one storey which responds to the heights of the existing buildings.



**Client**  
Western Health & Social Care Trust  
**Location**  
Omagh Co. Tyrone  
**Nature**  
Newbuild healthcare facility  
**Procurement**  
Performance Related Partnering/  
GC Works

Healthcare



Rathview Mental Health Facility

Healthcare





# The Croft, Newtownabbey

The Croft is a supported residential care scheme located in Newtownabbey, Co. Antrim, specifically designed for people living with early stage dementia.

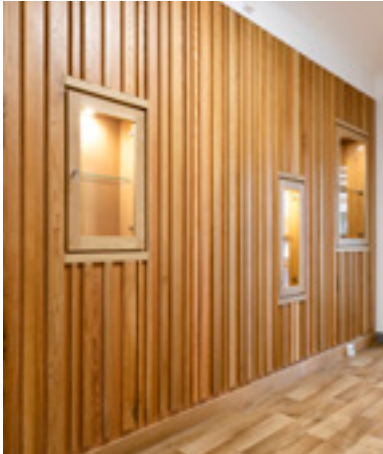
Funded by Choice Housing Ireland Ltd, Northern Health and Social Care Trust, and the NI Executive, the £3.1 million scheme consists of 24 newbuild self-contained apartments arranged in a cluster on a brownfield site.

Designed to benefit the safety, therapy and wellbeing of its residents, the scheme is carefully and suitably landscaped for ease of accessibility and limited maintenance, allowing and encouraging its residents to follow a conventional life pattern.

All apartments have been designed to lifetime home standards. The design surpasses current standards for supported housing and dementia care, setting a new precedent of quality, the challenges of the site and ensures cost targets are met.

The central core of the building contains the main entrance and communal facilities. The aprtments are grouped in "communities" of six apartments and are arranged around the central core.

The scheme has been developed as a single storey building is located in the centre of the site. With the four branches of apartment clusters splitting off the core of the building to humanise the scale and reduce the impact of the development on the neighbouring buildings.



**Client**  
Choice Housing Association  
**Location**  
Newtownabbey, Co. Antrim  
**Nature**  
New build supported housing  
**Procurement**  
NEC Contract

Healthcare



The Croft

Healthcare



# Support & Related

The health sector covers a broad spectrum of building types outside of those most commonly associated with acute and primary care provision. Those which the practice has successfully delivered range from regional supplies services accommodation, to medical laboratories, mental healthcare provision, pathology units and mortuaries. In the related bio-medical field, we have completed major research facilities for both Queens University Belfast and the National University of Ireland, Galway.

Case Study  
Support & Related



## Ballymena Ambulance Station, Co. Antrim

This project will provide the Northern Ireland Ambulance Service with a new Ambulance Hub on the Ballee Road, to serve the population of Ballymena and surrounding areas. Replacing the existing ambulance station at Braid Valley Hospital, and providing increased accommodation to house 45 no. staff, 5no. ED vehicles, 4no. RRV, 3no. PCS vehicles, Divisional HQ accommodation for the Northern Area and a 25 seat conference room.



**Client**  
Northern Ireland Ambulance Service  
**Location**  
Ballee Road, Ballymena  
**Nature**  
New build ambulance hub  
**Procurement**  
Traditional





# Enniskillen Ambulance Station, Co. Fermanagh

New Ambulance Station in Enniskillen comprising vehicle garaging, offices and crew stand-by facilities. This is the second ambulance station under our current framework agreement with Northern Ireland Ambulance Station (NIAS). The Enniskillen station is similar in design concept to the previous Ballymena station.

The station is being completed to BREEAM Excellent standard and is currently progressing well on site, due for completion in September 2017.



**Client**  
Northern Ireland Ambulance  
Service (NIAS)  
**Location**  
Enniskillen  
**Nature**  
New build ambulance hub  
**Procurement**  
Traditional

Healthcare



Enniskillen Ambulance Station

Healthcare





## RNLI Station, Lough Erne

RNLI's first permanent inland lifeboat station at Upper Lough Erne, Carrybridge in county Fermanagh. The modern station will replace the temporary accommodation which has housed the charity's volunteer lifeboat crew for the past 13 years. The new station house an inshore lifeboat and launching tractor, rescue water craft (RWC) and quad, a relief RWC, mechanics room full crew changing facilities on the ground floor. The crew's new training facilities, main office and storage room is located on the first floor. Outside the lifeboat and RWC will launch down a newly built, state-of-the-art slipway.

The new station is designed with a ground source heat pump, keeping the temperature within the boat hall at an ambient 15 degrees Celsius. The excess is used to heat the water for showering, washing up and cleaning the vessels. The scheme was developed as a catalogue design, and TODD Architects are currently supporting a number of RNLI projects including new inland lifeboat stations at Lough Derg Tipperary; Lough Ree, Athlone and Lower Lough Erne, Killydeas.



**Client**  
RNLI - Royal National Lifeboat Institution  
**Location**  
Upper Lough Erne, Carrybridge Co. Fermanagh  
**Nature**  
New build  
**Procurement**  
Traditional

Healthcare



## Medico Legal Centre, Dublin

This scheme is a joint venture between Dublin City Council and the Department of Justice to provide a state of the art mortuary facility capable of serving all of Ireland. The building design has been developed by McCullough Mulvin Architects with TODD Architects appointed for the building fit-out. The scheme occupies a site in Marino, north Dublin, part of the fire brigades head quarters. It contains two double height PM rooms, 60 person body storage, forensic laboratory and associated offices. The building has quality finishes, generous spaces and is intricately detailed to provide a working environment for its operatives along with sensitive areas for body identification.



**Client**  
Dublin City Council / Department of Justice  
**Location**  
Marino, North Dublin  
**Nature**  
Healthcare Fit-out  
**Procurement**  
Traditional

Healthcare



# Masterplanning & Development Control

The pace of clinical innovation and changing patterns of healthcare provision places particular demands on the long term strategic planning of hospital complexes. Masterplanning therefore becomes a fundamental task and must be informed by the following: The surroundings in terms of potential developments, links to transport, commercial activities and regeneration opportunities; Best use of land; Best use of site topography (sun paths, boundaries, views, landscape); Strategic infrastructure decisions (roads, engineering services underground, access) which minimise restrictions for future development; Potential phased site developed and buildings reaching end of use; Avoiding sterilising parts of the site now which could be used in future. The practice has successfully completed masterplans and estate development strategies for a number of health trusts throughout the UK and Ireland.



Craigavon Masterplan



Case Study  
Masterplanning & Development Control

# South West Acute Hospital, Enniskillen

The practice was appointed with local architects Hall Black Douglas and health planners Watkins Gray International, following a competitive interview process to prepare an exemplar design for a new £250m major acute hospital for the south west of Northern Ireland. With procurement proceeding under a PFI contract, this exemplar approach was introduced by the commissioning bodies both with a view to increasing design quality, whilst also reducing bidding costs.

Approximately 60,000sqm the new hospital is located on the outskirts of Enniskillen Down on a sensitive green-field site over looking Lough Wolf. The project incorporates a full range of facilities required in a modern acute hospital. Full accident and emergency services, imaging, theatres, various ward and a host of out-patient facilities are included, designed to integrate into the countryside and benefit from the views to both the hills and lake. The design and procurement has proceeded through government review and PFI processes.



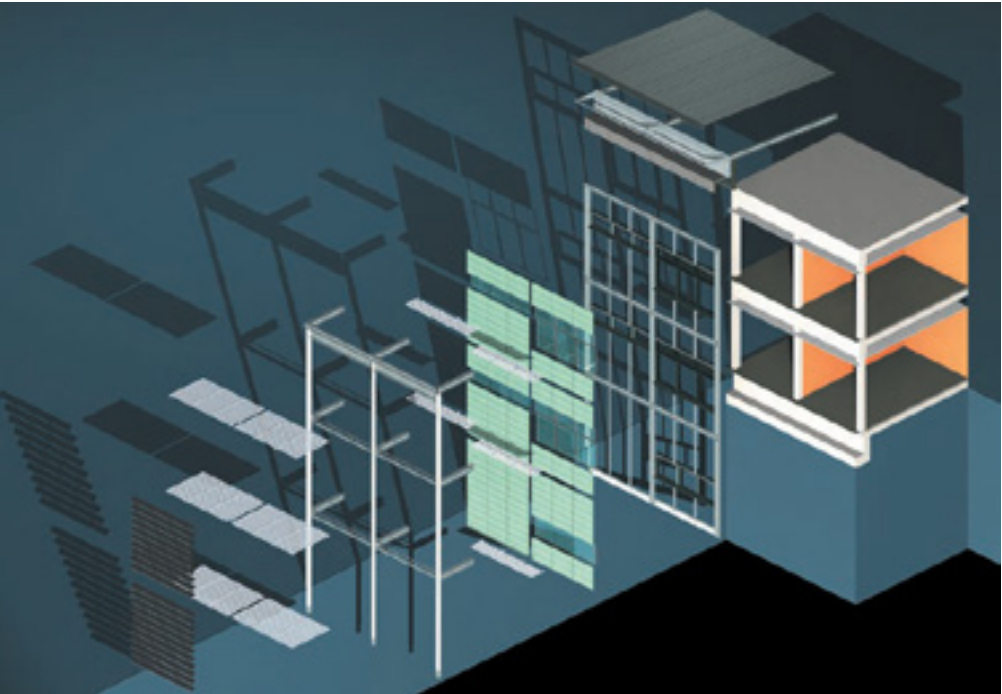
Healthcare

Case Study  
Masterplanning & Development Control

# Ulster Hospital Re-cladding, Dundonald, Belfast

As well as Masterplanning our experience has included the reconfiguration and remodelling of existing healthcare buildings. we developed proposals for re-cladding and extending the existing buildings at the Ulster Hospital.

These designs formed part of the design guide for a series of buildings successfully delivered, including the Critical Care and Maternity buildings.



Healthcare



# Development Control Plan Ulster Hospital

In March 2003, following informal discussions on the possible restrictions within the strategic development plan, Todd Architects were asked to carry out an analysis of the properties and sites within ownership of the Ulster Hospital and to co-ordinate the incorporation of all current development proposals into a strategic development plan.

A team of multi-disciplinary consultants, led by Todds, worked in partnership with the Trust and Health Estates to prepare a comprehensive design. The completed Development Control Plan was issued in July 2003, bringing together the needs and requirements of the Trust and acting as a framework for the design and construction of a coherent and efficient hospital. The first phase of redevelopment will be completed by 2010.



# Ashford and St Peter’s Hospital Masterplan

Todd Architects were appointed following competitive interview to assist the Trust in developing Development Control Plans for both the Ashford and St Peter’s Hospitals sites, to permit the preparation of an outline Business Case to the SHA. The Trust had elected, following public consultation, to re-engineer the services provided on both sites, focussing acute and emergency care at St Peter’s and elective surgery at Ashford. Our studies examined the phased development at St Peter’s, creating a new integrated critical care facility (CCU, ITU and HDU) around existing A+E facilities; operating theatres, day procedures, central sterilising department and surgical wards in Phase 2, and through careful decanting of outdated buildings, the eventual creation of a new Mother and Child Centre.





# Contact

## Offices

### Belfast

2nd Floor, Titanic House  
6 Queens Road, Belfast, BT3 9DT

T +44 (0)28 9024 5587  
E [info@toddarch.co.uk](mailto:info@toddarch.co.uk)

### London

18 Wells Street  
Fitzrovia, London, W1T 3PG

T +44 (0)203 146 9555  
E [info@toddarch.co.uk](mailto:info@toddarch.co.uk)

### Dublin

The Old Barracks, 4A Lad Lane  
Hagan's Court, Dublin 2, D02 T997

T +353 (0)1 6620 500  
E [info@toddarch.ie](mailto:info@toddarch.ie)

---

## Directors

### Paul Crowe

BA (Hons) DipArch RIBA MRIAI

### Peter Minnis

BSc DipArch RIBA

### Peter Moran

BSc (Hons) DipArch RIBA

### Andrew Murray

BSc (Arch) BArch RIBA

### Gary McConville

BSc (Hons) BArch RIBA MRIAI

### Jim Mulholland

BSc (Hons) BArch RIBA

### Daragh Coleman

BSc (Hons) BArch RIBA

### Michael Edwards

FCCA