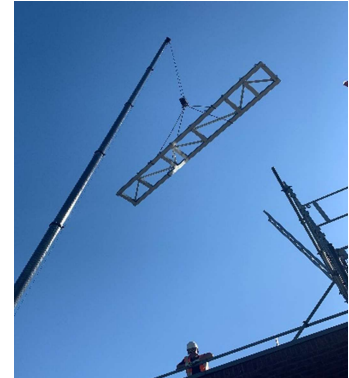


CASE STUDY: JAMES COOK UNIVERSITY HOSPITAL Teesside



**GEOFFREY
ROBINSON**
SINCE 1971



CONSTRUCTION – New CT Scanner room and rooftop AHU.

PROJECT OVERVIEW

Geoffrey Robinson Limited are a preferred construction partners for many of the NHS Trusts in the North East regional, and our construction team led the extremely fast turnaround project to construct a new CT scanner facility in line with the recent COVID 19 requirements.

Working to social distancing circumstances, our Construction team, led by Peter Prior, were given 10 weeks to complete the project, including survey, design, installation and commissioning.

The works location was a quadrangle of ground within the existing hospital building, adjacent to the A&E ambulance entrance and opposite the helipad, so liaison with hospital staff and HEMS with a transport plan was critical.

With few existing drawings, our team had to survey and locate the existing drainage and services, especially as the floor required reinforcing, ready to take the 6- tonne weight of the CT scanner. The ceiling also needed reinforced, as the CT scanner AHU was located on the rooftop. Our team worked in very close liaison with the design team to determine the final design of the facility.

Geoffrey Robinson were the Principle Contractor, and our team were responsible for all the construction, mechanical and electrical design and building services, including FIRAS fire-stopping. We utilised specialists from Siemens to install the CT scanner, and others subcontractors were used for special services such as the nurse call and alarms etc. to ensure conformity to existing hospital services and support.

The project was undertaken in co-operation with SERCO, who manage the site on behalf of South Tees NHS Hospital Trust, and completed safely and to the expected delivery schedule and budget, circa £700,000.

When considering the site constraints and lack of defined scope at the commencement of the project, this project is a great testament to our can-do culture of our Construction team

Geoffrey Robinson Limited are extremely proud and grateful to have been of service to our vital regional NHS in these difficult and extraordinary coronavirus times

CONSTRUCTION DETAILS

SERVICES PROVIDED

- Principle Building Contractor
- Initial ground surveys to identify and protect existing service ducts and drainage
- New electrical switchboard and electrical services to the CT scanner
- Reinforcing of all floors and building framework to ensure that the combined weights of the CT scanner and AHU were possible.
- Construct new entrances with associated door access and CCTV
- Construction of lead lined CT scanner room, with associated lead lined control screen within the CT scanner room.
- All associated electrical lighting, water services and alarm systems to integrate with hospitals existing services.
- Rooftop mounted AHU with associated ductwork, ductwork and pumps, fans and controls etc.
- FIRAS fire stopping - all compartments
- All associated decorating and floor finishes along with domestic white goods facilities.
- 80 tonne crane, with 60M Jib.



FURTHER INFORMATION AND CONTACT VIA:

COLIN ELCOCK

Business Development Manager

Geoffrey Robinson Ltd
Macklin Avenue
TEESSIDE, TS23 4ET

Tel: 01642 370 500
Email: ce@geoffreyrobinson.co.uk
www.geoffreyrobinson.co.uk

