

CASE STUDY:

MACMILLAN CANCER CENTRE

Friarage Hospital - Northallerton



**GEOFFREY
ROBINSON**
SINCE 1971



MECHANICAL AND ELECTRICAL – New Build Installation and Commission

PROJECT OVERVIEW

Completed in October 2018 Geoffrey Robinson completed the M&E fit out and commissioning of a brand-new MacMillan Cancer Care building located at the Friarage Hospital, Northallerton.

The works, valued at £1.3 million was won by competitive tender and our team worked with the main contractor Interserve, undertaking the construction works in a live hospital environment, where we had to take primary M&E utility services from existing electrical and heat distribution networks.

A challenging building due to the fact that the building is has a donut floor plan, maximising the natural light availability to both the internal and external rooms.

The works were completed to HTM standards and close liaison with the site estates' team was a necessity to ensure that our team and deliveries did not impact upon the everyday routines of this busy hospital site.

SERVICES PROVIDED

- M&E Contractor
- Project management and programming
- All HVAC (ducting and AHU) and local Air Conditioning
- Medical gases
- Sanitary ware and LTHW
- Pipework, isolators, valves drainage and thermal insulation
- Link to existing services

Electrical installation and commissioning of:

- HV and LV services and associated electrical infrastructure
- BMS Controls
- Smoke, Nurse Call, Intruder and Emergency alarms
- Door access and CCTV

FOR FURTHER INFORMATION CONTACT:

COLIN ELCOCK

Business Development Manager

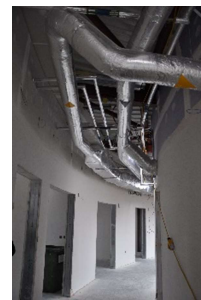
Geoffrey Robinson Ltd
Macklin Avenue
TEESSIDE, TS23 4ET

Tel: 01642 370 500
Email: ce@geoffreyrobinson.co.uk
www.geoffreyrobinson.co.uk

CONSTRUCTION PHOTOGRAPHS



Challenging Round Building



Geoffrey Robinson's engineers undertook all the welding and ductwork production and assembly

