



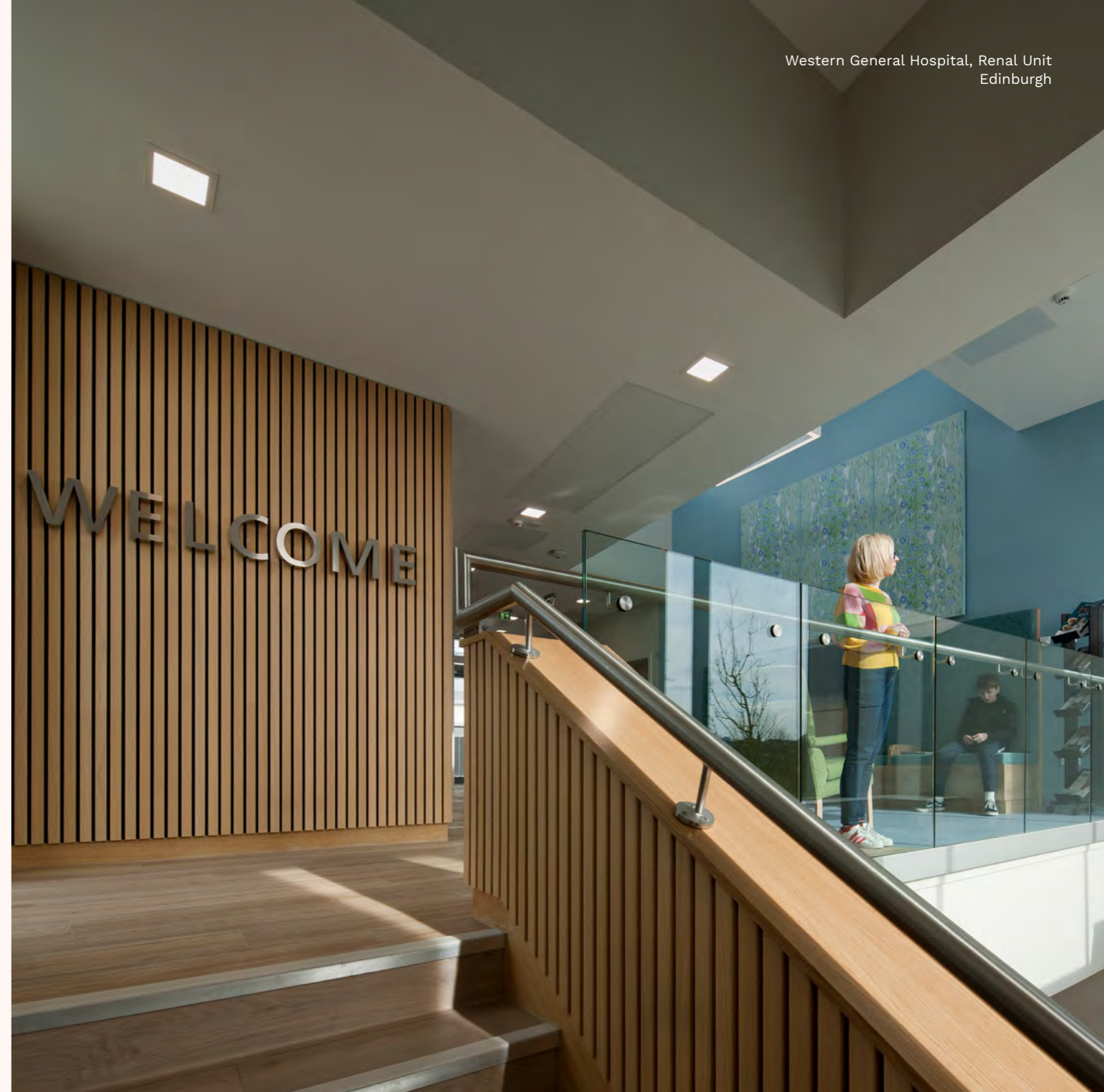
HLM  
Architects

Thoughtful design  
for Sustained Health

Creating healing  
and therapeutic  
environments that  
speed recovery and  
improve wellness.

## Contents

- 8 Our Healthcare Approach
- 10 Our Work
- 54 Our Team
- 56 Summary



About HLM Architects

# Thoughtful design to make better places for people.

## Disciplines

- Architecture
- Interior Architecture
- Landscape Architecture
- Masterplanning
- Sustainability

## Sectors

- Defence
- Education
- Healthcare
- Hospitality, Leisure & Culture
- Justice & Emergency Services
- Logistics
- Regeneration
- Residential
- Workplace

Thoughtful design and the desire to make spaces and places that improve lives sits at the heart of every discipline within HLM. Places of education that inspire, healthcare environments that nurture, homes that are part of thriving communities, and infrastructure that is sustainable in its widest sense: environmentally, economically, and socially.

We listen to the ambitions of our clients and understand the needs of the people who will use the places and spaces we create. By encouraging an environment of openness, enjoyment, and creativity we can create memorable, meaningful places that delight as well as satisfy.

## One Team

- 200 Employees
- Since 1964

## Values

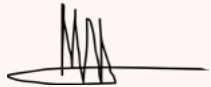
- Transparency
- Creativity
- Expertise
- Commitment



## Introduction



Melanie Jacobsen Cox  
Head of Healthcare



In healthcare environments, thoughtful design is even more vital and we firmly place people at the centre of our design through our 'Well Staff Better Patient' approach.

For over 40 years, we have been designing award-winning healthcare projects that provide healing and therapeutic environments. Our extensive sector knowledge enables us to be both innovative and practical in our designs.

From the importance of landscape to the detail of the interiors, we understand the unique constraints required to deliver a healthcare facility.

We value the merits of standardisation for improved efficiencies, better safety during and after construction, along with the sustainability drivers for improved personal, global and planetary health. We weave these requirements together through an architecture that seeks to distract with delight, even during the most challenging of circumstances.

The projects included in this document demonstrate the hard work, passion and deep thinking that our healthcare team have delivered on a wide range of demanding projects, all of which we are immensely proud.

Healthcare facilities that promote staff wellness and better patient care.



# Our Healthcare Approach

## 1 Health Creation

For sustained human health to be met, we need to improve our planet's health to enable us to live longer with good food, fresh air and clean water. Creating healthy communities is key, not only does it enable us to live better lives, it reduces demands on our health service.

Through living better lives, we are more likely to make informed choices about how we live, taking control of our behaviours and acting more responsibly in order to live sustainably.

## 2 Prevention of Illness

Health Creation sets the context for communities to live better lives, which in turn provide the mechanisms that allow communities to access health services. At HLM, our healthcare design is centred around people to create better places, and better lives by default.

Allowing people to keep well at home and easily access health services in the local community helps people to live longer, healthier lives, and reduces the demand and delays in acute treatment.

## 3 Treatment

The role of the acute hospital is to provide treatment of serious conditions and ill health and has been the subject of great change over the years, from the large district general hospitals before the PFI era to the smaller trauma centres of today.

Throughout this changing landscape, HLM's ethos of 'Thoughtful Design' has been consistent in producing buildings that have patient, staff and visitors at their heart. Through our approach of carefully listening and responding to our clients' requirements, we deliver healing and therapeutic environments where patients feel better and staff morale is improved.

At HLM, we understand the importance of holistic design. From the context of our landscapes to the smallest of interior details, no aspect of our lives should be subjected to stress, unhappiness, illness or pain.

This is of course even more pertinent in the Healthcare Sector and the design of our healing environments provide the spaces needed to minimise length of stay, speed recovery, improve wellness and reduce the need for re-admission.

# Our Work



## Western General Hospital, Edinburgh Renal Unit

The site for the new renal unit at the Western General Hospital, Edinburgh is located on the main access road into the hospital complex and sits between the Scottish Health Service Centre (SHSC) training and administration building to the east, and ward 1 to the west.

The new building replaces the existing renal unit which was 30 years old.

The site itself presented a number of challenges; the site drops approximately 2.5m across its width, and slopes down from north to south.

The main access road into the hospital (on the north) is busy, and whilst there was no space for patient drop off, the brief required an entrance for visitors arriving on foot, with the main entrance to be located to the south, to accommodate patients and visitors arriving by car.

The site is located adjacent to the old Nuffield transplantation surgery unit (now Ward 1). The brief required the new renal building to physically connect to this building (and its internal circulation), facilitating access to the wider hospital. Existing access to the adjacent Scottish Health Service Centre (SHSC) building had to be maintained to the east of the site.

### At a glance

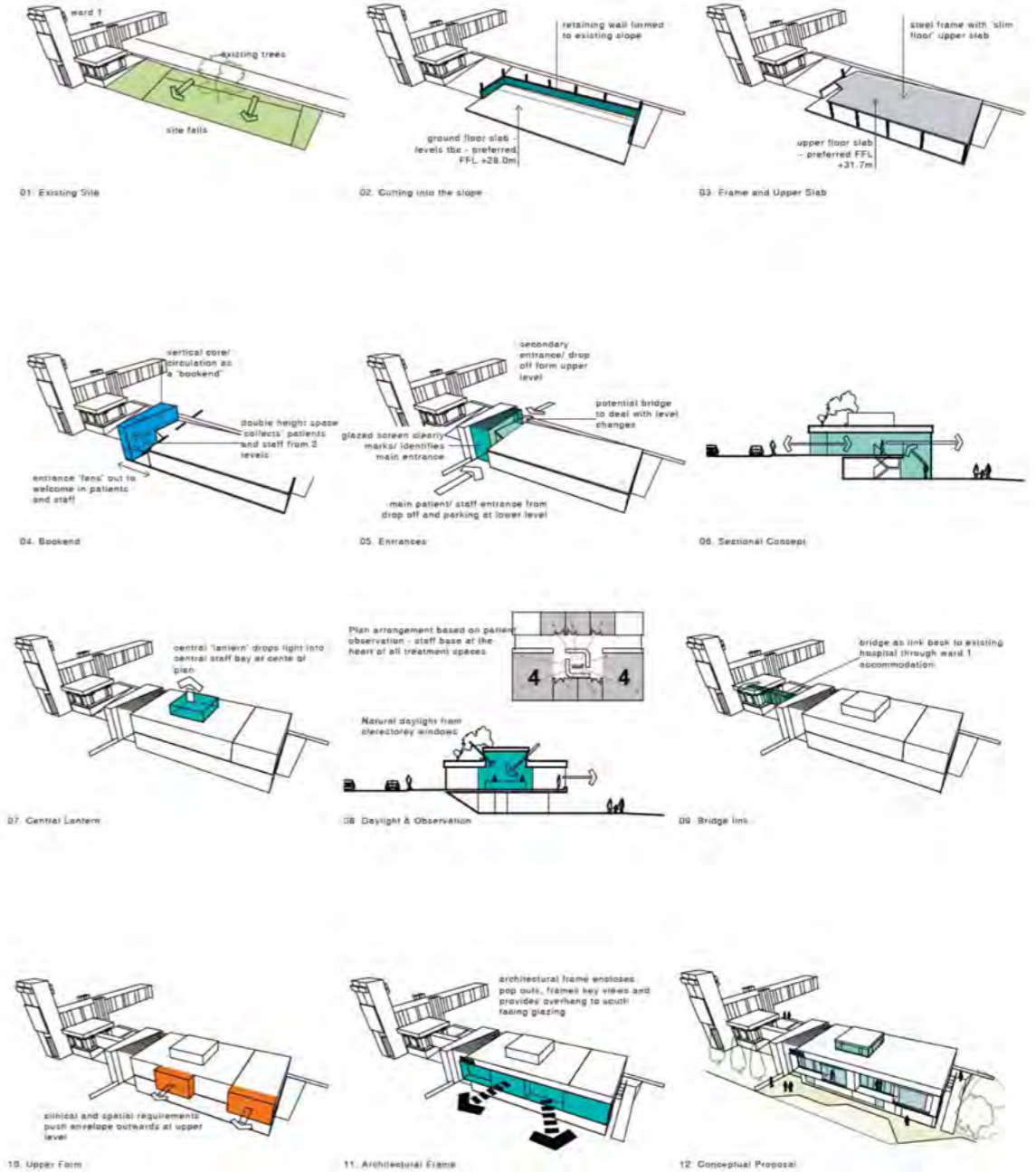
**Client**  
NHS Lothian / RMF Health

**Location**  
Edinburgh, Scotland

**Services**  
Architecture  
Interior Architecture  
Landscape Architecture

**Scheme Facts**  
12 Dialysis stations  
2 no. 4 station treatments bays  
4 single rooms

**Awards**  
Healthcare Commendation  
GIA Awards 2023  
Shortlisted Scottish Design  
Awards 2023



## Dublin New Children's Hospital Satellite Centres

### Tallaght Centre

HLM were lead designers for the development of two satellite community health centres (Tallaght and Connolly hubs) to provide outreach facilities for the main new children's hospital at St James's hospital campus in central Dublin.

The Tallaght centre expanded and improved the existing outpatient department, as well as providing additional services of: Child Sexual Assault Unit (CSAU), Urgent Care, Fracture Clinic, Physiotherapy and Diagnostics. By integrating these multiple services into one comprehensive facility, the Children's Hospital Satellite Unit at Tallaght provides a child-friendly healing environment in one place which will reduce pressure on central A&E services.



### Connolly Centre

The Connolly centre is a new paediatric healthcare service. It forms part of the new model of care for children's health services in Ireland providing care as close to the patient's home as is clinically appropriate.

The new centre provides outpatients clinics and urgent care services, staffed by specialist paediatric staff, including nurses, doctors and health care professionals from the children's hospitals in Dublin. It treats children with minor injuries and illnesses that are not life-threatening and do not require a visit to the Emergency Department (ED).

### At a glance

#### Client

National Paediatric Hospital  
Development Board (NPHDB)

#### Location

Dublin, Ireland

#### Services

Architecture  
Landscape Architecture  
Interior Architecture

#### Scheme Facts

Built over 2 separate sites  
Connolly & Tallaght

Paediatric Outpatients Centre at  
Connolly Hospital

Urgent Care Centre based at  
Tallaght University Hospital

#### Awards

Healthcare Project of the Year  
Award - Irish Building and  
Design Awards 2022





**Western General Hospital, Edinburgh**  
**Linac & Administration Offices**

The new 1,800m<sup>2</sup> linear accelerator (Linac) treatment facility for NHS Lothian houses radiation-shielded bunkers, a cancer assessment unit and oncology administration offices.

The project was delivered in a live hospital environment and physically links to the existing radiotherapy department, enabling inpatients to be transferred between areas.



The specialist design ensured the project was delivered without disruption to any of NHS Lothian's clinical services on the site, retaining ambulance access to the adjacent departments and buildings. This was achieved through close liaison with key stakeholders to ensure the works were properly planned and phased to integrate with infrastructure works and other building works that were run concurrently.

**At a glance**

**Client**

NHS Lothian / RMF Health

**Location**

Edinburgh, Scotland

**Services**

Architecture  
Interior Architecture  
Landscape Architecture

**Scheme Facts**

Constructed on a live site  
New radiation-shielded bunkers  
Cancer assessment unit  
Oncology administration offices  
Linac treatment rooms  
Biophilic interior concept



A key design feature was to remove the clinical feel of the building as much as possible.



Royal Hospital For Children & Young People and the Department of Clinical Neurosciences  
Edinburgh

The redevelopment of services from the Royal Hospital for Children and Young People (RHCYP), Child and Adolescent Mental Health Services (CAMHS) and the Department of Clinical Neurosciences (DCN) in a single building adjoining the Royal Infirmary of Edinburgh at Little France.

HLM delivered NHS Lothian's vision to create one inspiring space bringing together outpatient and inpatient facilities for paediatric care, specialist neonatal care, neuroscience, adult and children's emergency departments generating one site that works as a centre of excellence for staff and patients alike.

At a glance

**Client**  
Multiplex / NHS Lothian

**Location**  
Edinburgh, Scotland

**Services**  
Architecture  
Interior Architecture  
Landscape Architecture

**Scheme Facts**  
51,600m<sup>2</sup>

4436m<sup>2</sup> of overall space for safe internal landscaped courtyards

242 beds, 13 wards for inpatient and day care

10 theatres, 4 MRI scanners

Paediatric Emergency  
Department Critical Care Unit

Outpatient & Therapy Departments

Physical & Mental Health Specialities

Ronald McDonald House



**Altnagelvin Hospital, North Wing**  
Derry, Northern Ireland

The new North Wing development includes a new main entrance, hospital streets, 144 single bed ward accommodation, basement plant rooms and tunnels that connect into the existing operational services systems, external landscaping works and new arrivals zone.

The facility provides six new 24 bed inpatient wards, across three floors. In total there are 48 bedrooms per floor containing 4 no. isolation rooms, 6 no. bariatric rooms (1 per ward), 6 social care room (1 per ward), 36 no. hoist rooms. Service by central FM corridor that contains all support facilities, including staff welfare, training facilities and Specialist team rooms. The regen kitchen, disposal hold and FM lifts which link to the basement service tunnel are also located along the corridor. A 2 bed renal dialysis augmented care suite is also located at ground floor level.

**At a glance**

**Client**

Farrans / Western Health & Social Care

**Location**

Derry, Northern Ireland

**Services**

Architecture  
Interior Architecture  
Landscape Architecture

**Awards**

Winner RSUA Design Award

Shortlisted AJ Health & Wellbeing Award 2022  
Best Healthcare building

**Scheme Facts**

12,850m<sup>2</sup>

144 single bed ward accommodation

Main entrance

Triple-height foyer space

Internal courtyards



Six new wards providing clinical care and treatment in single en-suite rooms.



## Altnagelvin Hospital Re-development Derry, Northern Ireland

Altnagelvin hospital was completed in 1960 under the newly formed NHS.

The redevelopment of the 1960's acute-care hospital is to ensure that the upgrade of clinical and support services are integrated in a manner which optimises functional relationships; maximises space utilisation in the existing tower block; and does so in an aesthetically pleasing, cohesive environment.

This major hospital redevelopment project is organised over a number of carefully considered phases to minimize disruption to the existing operational hospital including:

- Phase 3.1 – Enabling Works & Refurb of Wards 31 & 32.
- Phase 3.2 – Pathology Laboratories & Pharmacy
- Phases 3.2a and 3.2b – New Build South Block
- Enabling works contracts 1 + 2 – endoscopy unit, new mortuary, and refurbished ward accommodation
- Phase 5 – North Block Extension and refurbishment of existing 11 storey tower block. Completed April 2022.

### At a glance

#### Client

Farrans / Western  
Health & Social Care

#### Location

Derry, Northern Ireland

#### Services

Architecture  
Interior Architecture  
Landscape Architecture

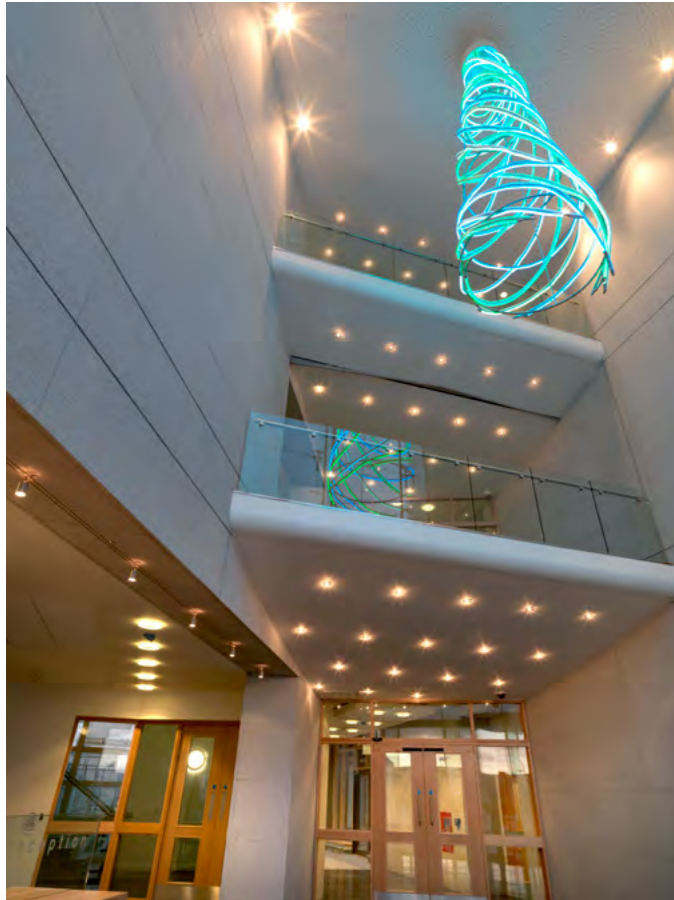
#### Scheme Facts

41,207m<sup>2</sup>

Working on the hospital  
in Phases since 2000

#### Awards

Winner RSUA Design  
Award  
Shortlisted AJ Health  
and Wellbeing Award  
2022 – Best Healthcare  
building



A major hospital redevelopment  
that optimises space and functional  
relationships in a cohesive way.



**Specialized Rehabilitation Hospital**  
Abu Dhabi, United Arab Emirates

The Specialized Rehabilitation Hospital is the region's first fully comprehensive rehabilitation hospital with 166 beds designed to serve all the rehabilitation spectrum ranging from sub-acute rehabilitation to long-term care ventilated patients of all ages.

Designed to enable rehabilitation patients to undergo all levels of treatment whether they require outpatient services, inpatient services, intensive care treatment or minor procedures. The hospital also has a full suite of radiology services, an in-house laboratory and robotic pharmacy. Moreover, the Specialized Rehabilitation Hospital has trademarked Bayt Al Qudra suites: 5 highly featured therapy and endurance suites with the region's first equipment using the latest VR technology and paediatric sensory-chambers.

**At a glance**

<b>Client</b>	<b>Scheme Facts</b>
Abu Dhabi Capital Group	24,000m <sup>2</sup>
<b>Location</b>	166 beds
Abu Dhabi, UAE	12 floors
<b>Services</b>	15 specialist high dependency beds
Architecture	118 dedicated parking spaces
Interior Architecture	
Landscape Architecture	
Technical Advisory	



**Queen's Centre for Oncology and Haematology**  
Hull, England

A Regional Cancer Centre for Humberside and North Lincolnshire providing cancer and haematology services on one site at Castle Hill Hospital. The project includes 6 linear accelerators together with outpatients and a day hospital, 100 beds in 4 wards and pathology, pharmacy and medical physics facilities.

The centre sits in a rural setting on the edge of the main hospital site, cascading down a northerly hillside to provide panoramic views of the surrounding countryside. The building is wrapped around themed courtyards, distinctively designed to provide stimulating outdoor spaces and assist orientation.

Through our approach, and by carefully listening and responding to our clients' comments we have delivered a truly healing environment, where patients and staff are uplifted and wayfinding is easy through connection to the surrounding setting.

**At a glance**

**Client**  
Shepherd Construction  
/ Hull & East Yorkshire  
Hospitals NHS Trust

**Location**  
Hull, England

**Services**  
Architecture  
Interior Architecture  
Landscape Architecture

**Awards**  
UK centre of excellence  
& RIBA Award winner

**Scheme Facts**  
20,000m<sup>2</sup>  
100 beds in 4 wards  
6 linear accelerators  
Pathology  
Pharmacy  
Medical physics facilities  
50 dedicated parking  
spaces



An outstanding building that treats a difficult and emotive issue in a sensitive and positive way.



**The New Victoria Hospital**  
Glasgow, Scotland

The New Victoria Hospital treats approximately 400,000 patients annually by offering integrated diagnostic and treatment services including outpatient clinics, day surgery, rehabilitation and specialised emergency services.

This thereby introduced an ambulatory model of one stop care in South Glasgow based on the following key principles:

- Increased accessibility to ambulatory care for the local community
- Prevention of emergency work adversely affecting the efficient delivery of elective care

- Improved quality of patient focused care
- Streamlining of the patient journey to provide a one-stop service
- Achieving compatibility between healthcare delivery and technology in a fit-for-purpose building

Within the context of this clinical brief, the new building was designed to respond positively to its unique urban setting in relation to both Battlefield Cross and Queen’s Park.

**At a glance**

<b>Client</b> Balfour Beatty Construction Ltd	<b>Scheme Facts</b> 41,700m <sup>2</sup> Minor Injuries Unit (with out of hours service)	8 Theatres including Ophthalmology 60 in-patient beds, made up of:
<b>Location</b> Glasgow, Scotland	Situated in the park	48 elderly care beds
<b>Services</b> Lead Consultant Architecture Interior Design	Integration of Healing Arts BREEAM Excellent	12 day surgery beds



**Brent Emergency Care & Diagnostic Centre (BECaD)**  
Middlesex, England

The building comprises nearly 27,000m<sup>2</sup> on 3 floors and provides a state of the art emergency treatment centre incorporating facilities for the streaming of emergency admissions in terms of major assessment and urgent treatment for adults with segregation from children's emergency.

The departments are co-located with comprehensive diagnostic imaging facilities and a suite of operating theatres.

The major functional components in the BECaD comprise an acute and critical care centre largely related to emergency services and an expert consulting centre which offers outpatient functions. It provides an operational base for all clinicians involved in the acute services. The same clinical teams will work across both elements of the accommodation provided, based on a new model of care developed for these key functions.

**At a glance**

**Client**

Bouygues UK Ltd /  
Central Middlesex  
Hospital NHS Trust

**Location**

Middlesex, UK

**Services**

Architecture  
Interior Design  
Landscape Architecture

**Scheme Facts**

27,000m<sup>2</sup>

Emergency care  
Diagnostic imaging  
Operating theatres





## Cynon Valley Hospital Mountain Ash, Wales

In response to calls for improved primary care and chronic disease management services in South Wales, the Cwm Taf Local Health Board embarked on a scheme to focus intermediate care, prevention and rehabilitation. This scheme is seen as a fundamental catalyst to the social regeneration objective for the area, and is paramount in promoting community activity and sustainability. Located north of Cardiff, the new building provides rehabilitation beds, and numerous supporting therapy functions as well as women & children's services in the form of focused and outpatient facilities. A significant mental health unit provides inpatient and outpatient services, as well as a significant community involvement.

The design of the building is focused on patient care through the therapeutic environment – an approach supported by a simple way-finding strategy, a strong landscape integration and a suite of sustainable strategies that include both renewable energy sources and passive climate control. All of the key design aspects have been driven by flexibility and sustainability.

### At a glance

#### Client

Cwm Taf Health Board

#### Location

South Wales, UK

#### Services

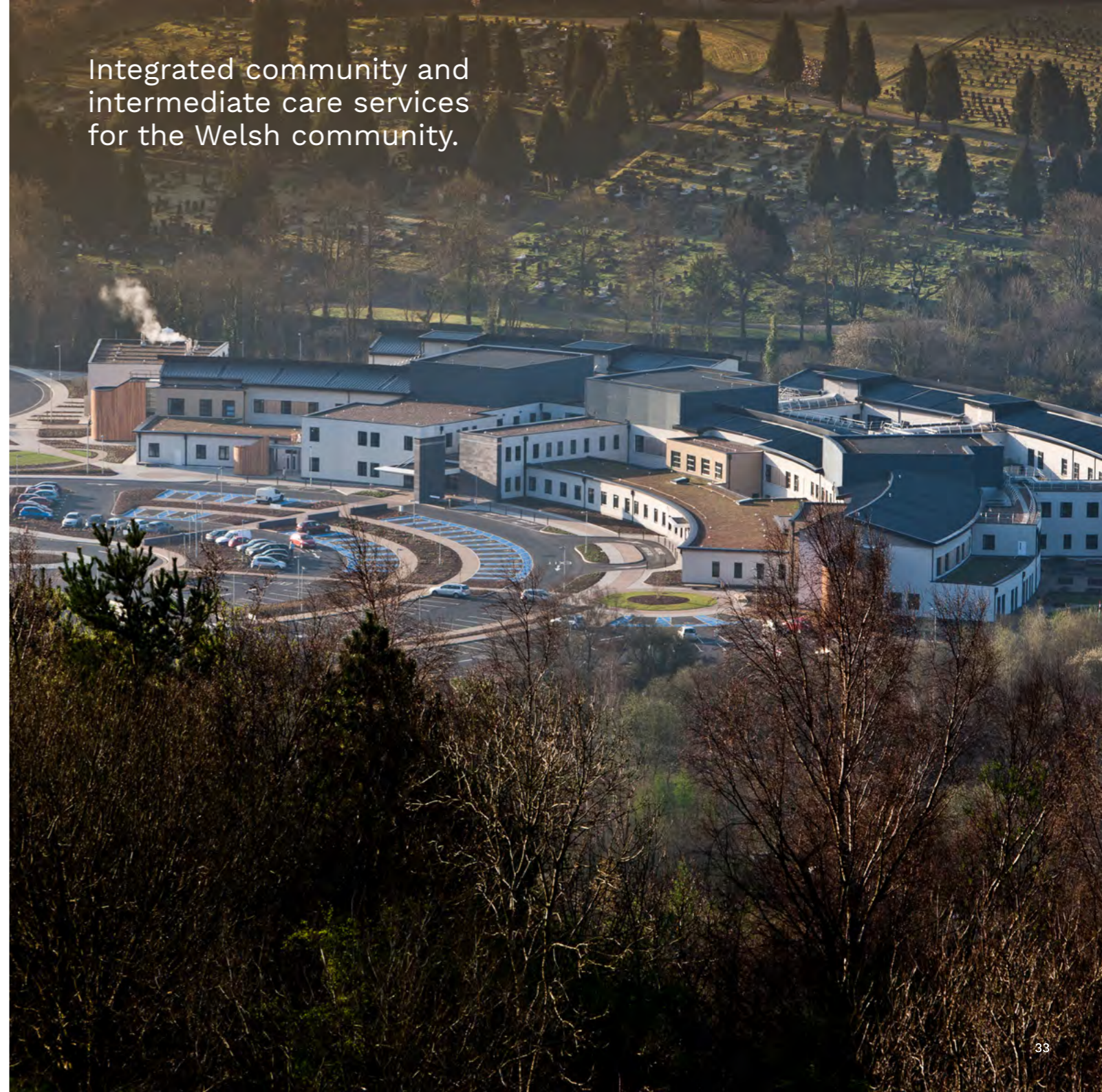
Architecture  
Interior Architecture  
Landscape Architecture

#### Scheme Facts

100 no. in-patient  
immediate care beds  
4 no. 25 bedded wards  
rehabilitation  
8 bed specialist palliative  
care ward  
16 bed older persons  
mental health ward  
Day Centres  
Minor injury  
Maternity  
Dental



Integrated community and  
intermediate care services  
for the Welsh community.



**Wilberforce Health Centre**  
Hull, England

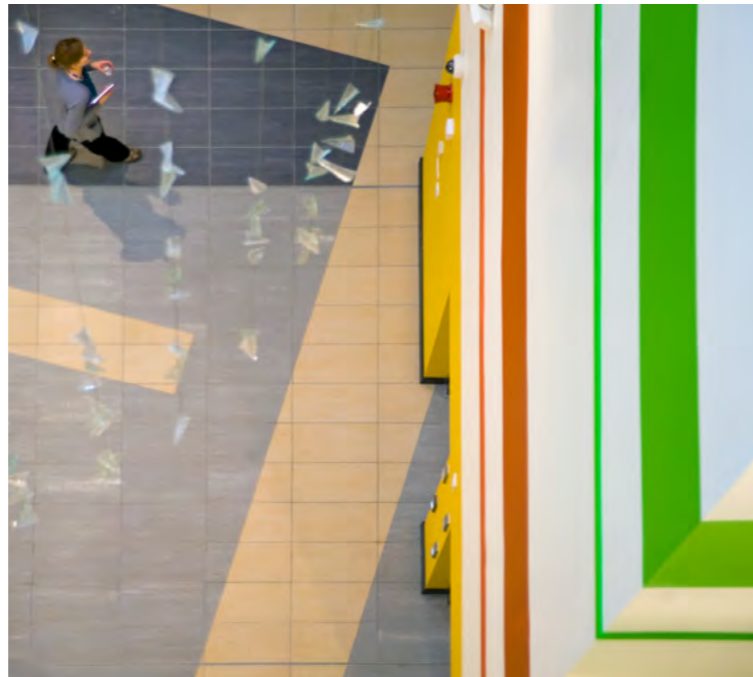
The brief by Hull Citycare was for a health centre and office building to fit within a prominent location at the heart of the city centre and form part of the Albion Square development plan.

The richness and heritage evidenced by the site studies warranted a proposal which maintains existing desire lines of the wider context and integrates the site and the city.

Our starting point was to undertake detailed research about the setting, its history within the City of Hull, its heritage and the adjacent buildings and spaces of quality in the area, particularly the Georgian district overlooking the proposed Albion square. The masterplan and detail proposals were developed with a multitude of stakeholders to meet Hulls forward regeneration aspirations.

**At a glance**

<b>Client</b> Hull Citycare	<b>Scheme Facts</b> 5,086m <sup>2</sup>
<b>Location</b> Hull, England	5 floors
<b>Services</b> Architecture Interior Architecture Landscape Architecture	98% of existing demolished building was recycled 2 biodiversity zones created



**Mid-Argyll Community Hospital**  
Lochgilphead, Scotland

Prior to the Mid-Argyll Community Hospital, healthcare services were delivered over a number of sites within Lochgilphead. The strategy was to co-locate modern, integrated primary care services with community health, acute facilities and social services under one roof, improving access to all health services provided locally for the community.

This building has provided replacement services within an integrated facility which maximises the potential of

interdisciplinary working and associated efficiencies in terms of communication, time and cost and therefore, benefit to patients.

This model delivers all of the advantages of having staff working under the same roof, promoting an understanding of each others' roles and activities facilitating easier referrals and staff interaction.

**At a glance**

**Client**

Balfour Beatty  
Construction /  
NHS Argyll and Clyde

**Location**

Lochgilphead, Scotland

**Services**

Architecture  
Landscape Architecture

**Awards**

RICS Community  
Benefit Award 2007 -  
Commended  
PPF Awards Public Joint  
Sector Working 2007 -  
Shortlisted

**Scheme Facts**

7,500m<sup>2</sup>  
Out-patient services  
Acute in-patient services  
In-patient  
accommodation for  
elderly care  
Accident & emergency  
Dementia care services  
X-ray facilities



A modern primary care service in rural Scotland, integrating primary care, community health and local services under one roof.



**Clackmannanshire Community  
Healthcare Centre**  
Clackmannanshire, Scotland

An integrated health centre for Alloa and community hospital for Clackmannanshire on a single site.

The facility comprises of a health centre with pharmacy and community patient services, inpatient and day hospital building and community mental health resource centre with consulting rooms. Day hospital accommodation on the ground floor with non patient staff office above.

The purpose was to establish an integrated health facility that meets the needs of the residents of Alloa and the wider population of Clackmannanshire. Benefits in the overall delivery of healthcare and support services are derived from the provision of a unified facility with health centre services and community hospital sharing a close adjacency to each other.

**At a glance**

<b>Client</b> NHS Forth Valley	<b>Scheme Facts</b> 7,000m <sup>2</sup>
<b>Location</b> Clackmannanshire, Scotland	Chronic disease management
<b>Services</b> Architecture Interior Design Landscape Architecture	Antenatal & maternity care Child health Health promotion services



A cornerstone of healthcare provision,  
bringing an integrated healthcare  
service to the local community.



## Midlothian Community Hospital Midlothian, Scotland

HLM's design concept was to create a modern health facility within a single building which would provide several enhanced local services including an outpatients department and child health services whilst replacing two existing hospitals; Rosslynlee and Loanhead.

The main feature of the design was its inherent simplicity. The building is divided into two main zones, one of which houses the main entrance, outpatient areas, allied health professional services and day hospital, whilst the other unit is dedicated to the inpatient units.

The communication routes and social spaces throughout were designed to provide a great deal of natural light and to afford glimpse views to external landscaped areas. This avoids an institutional character which was obvious in many older buildings of this type.

The simplicity of the building plan form was designed to aid intuitive wayfinding and the compact footprint of the building which minimised the distance between department entrances and external entrances which benefits all building users.

### At a glance

**Client**  
Robertson Construction

**Location**  
Midlothian, Scotland

**Services**  
Architecture  
Interior Design  
Landscape Architecture

**Scheme Facts**  
7000m<sup>2</sup>  
88 beds for elderly & infirm patients  
Out of hours service  
(Lothian Unscheduled Care Service)



**Ellesmere Nursing Home**  
Chelsea, London

The Ellesmere nursing home is located on Fulham Road, Chelsea, London. It replaces the derelict home that existed on the site up to 2003. The nursing home and day centre consists of a 3 level courtyard arrangement. Inside the scheme features en-suite bedrooms, a café, cinema, activity room, hair salon, relaxing lounges, and a kitchenette for residents' use.

As the residents of Ellesmere House are elderly, the landscape had to perform a practical function first and foremost. It was specifically designed to ensure and aid easy and intuitive movement through the outdoor spaces. Smooth, flush surfaces designed to avoid trip hazards, while handrails positioned throughout the landscape to assist the physically frail. Alongside the functional element of

the landscape is its importance as an outdoor, therapeutic retreat.

Two courtyards compliment the building form and layout - the contemplation garden and the lower courtyard. The contemplation garden designed around the three retained trees that dominate the courtyard. Smooth curves and soft sensory planting surround the tranquil seating area positioned in this space. The hard surface materials change from paving to a resin bound gravel path in front of the seating area in order to provide a softer, park-like feel and signal an obstacle to those with poor eyesight. The lower courtyard takes on the form of a figure of 8 which is the preferred walking pattern for dementia patients.

**At a glance**

**Client**  
Taylor Woodrow

**Location**  
Chelsea, London

**Services**  
Architecture  
Interior Design  
Landscape Architecture

**Scheme Facts**  
Nursing home, day care centre  
Residents lounge & kitchen area  
En-Suite bedrooms  
Sensory garden  
Cafe  
Cinema  
Hair salon



**University of Lincoln, Medical School  
Lincoln**

In 2018, the Higher Education Funding Council England and Health Education England approved the University of Lincoln’s collaborative bid with the University of Nottingham to establish a new medical school in the city. The new medical school is a key part of a regional strategy to address chronic specialist medical staffing shortages, particularly in primary care and mental health.

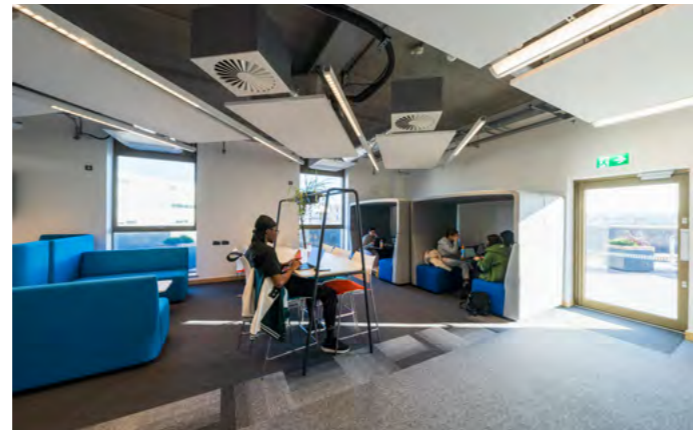
The 5,500m<sup>2</sup> five-storey building comprises an active lecture theatre, laboratories, pro-section anatomy suites, equipped with cutting-edge diagnostic tools, and a clinical skills suite with mock consultation rooms to simulate hospital wards or a GP’s surgery. Alongside the technical brief the University were keen that the building visually and physically promoted

health and well-being. The new medical school is therefore based on biophilic design principles and is the most sustainable building on their campus.

The whole design team were appointed through the Scape framework from project inception, working together to develop a design that met all the technical challenges of a medical school while being zero carbon in operation. During the feasibility stages six designs options were developed complete with servicing strategies and each one was assessed against the key brief requirements and carbon. This enabled informed decisions to be made from the outset and options for carbon saving to be fully explored.

**At a glance**

<p><b>Client</b> University of Lincoln</p> <p><b>Location</b> Lincoln, UK</p> <p><b>Services</b> Architecture Interior Design Landscape Architecture</p>	<p><b>Scheme Facts</b> 5,500m<sup>2</sup> five-storey building</p> <p>Biophilic design principles</p> <p>“Fabric-first” approach to reducing energy</p>	<p>Over 200 rooftop mounted photovoltaic panels</p> <p>Integrated solar facade</p> <p>Green wall</p>
--	---	--



**Advanced Wellbeing Research Centre**  
Sheffield Hallam University

The centrepiece of the Sheffield Olympic Legacy Park, the Advanced Well Being Research Centre co-locates business, industry and the public sector to work collaboratively to develop innovations to help people move and improve the nations quality of life using Sheffield as a living lab. The new building includes 3800m2 of specialised laboratory, research and office space to support world-leading research and take services and products from concept to market

Based on research themes of supporting healthy and active life styles, the management and treatment of chronic diseases and technological and digital innovations to promote independent lives its research and design facilities include state-of-the-art, fully instrumented indoor and outdoor laboratories and research space for academics in health, engineering, sport science, robotics, applied computing, psychology, art and design.

**At a glance**

**Client**

Sheffield Hallam University / Legacy Park Ltd

**Location**

Sheffield, UK

**Services**

Lead Consultant  
Architecture  
Interior Design

**Scheme Facts**

Constrained footprint

State of the art research facility

BREEAM Excellent rating

Space heating and hot water provided by Sheffield's District Heating system

Facade material from sustainable sources

Natural daylight and ventilation

South facing roof terrace





**Boole Technology Centre & Pharmaceutical Research Labs**  
Boole, UK

Lincoln Science and Innovation Park (LS&IP) brings together established and growing science and technology businesses, industry leaders, and University researchers and technicians, in a highly collaborative environment. With access to key clusters and supply chains within industry, the facilities provide opportunities for working together to facilitate national and international growth. The new labs building offers flexible, multi-occupancy office, laboratory and technical workshop space, in a stunning modern development within LS&IP.

The new research laboratory building designed by HLM was conceived as a gateway to the new science park but with expansion and flexibility very much central to our proposals. The Stakeholder vision centred on attracting private

enterprise to the facility whilst encouraging post graduates to stay within the area, retaining key skills in the areas of science, medicine and technology.

Internally the spaces have been designed to be flexible and easy adaptable over time to meet future needs of the users while natural ventilation and daylight minimises energy usage. 10% of this energy is provided through PV panels on the roof and there is the potential to increase this renewable energy in the future. The scheme is on a brownfield site, reusing the previous industrial site to create start up units to encourage innovation across the campus. It is also in a flood zone so active flood defence measures have been incorporated into the design including a rain water retention basin to reduce outfall from the site.

**At a glance**

**Client**

LSP&IP + UoL

**Location**

Boole, UK

**Services**

Architecture  
Interior Design  
Landscape Architecture

**Scheme Facts**

Cat I and II laboratories  
accommodating life  
sciences and chemistry  
fields

22 individual units from  
400sqft to 5000sqft  
depending on tenant  
requirements



**New South Glasgow Hospital Major Lab Redevelopment  
Glasgow, Scotland**

HLM (in association with BMJ Architects) were part of Currie & Brown’s Team for the Technical Advisor Role on the £842M New South Glasgow Hospitals Project. The major project delivered a new 1109-bed adult acute hospital and a new 240-bed children’s hospital, together with a major laboratory development, on the existing Southern General Hospital site.

As the second phase of the NHS Greater Glasgow & Clyde Acute Services Review (ASR2), the triple co-location of children services, maternity and adult acute services achieves the recognised gold standard of care on the New South Glasgow Hospitals Site.

HLM were responsible for developing the exemplar design for the project which provides 100% single bed adult

accommodation within a 4 wing tower and acute diagnostic facilities, including a new Emergency Complex, within a podium block. The provision of Children’s Services on this site provides a New Children’s Hospital with its own identity as part of the New Hospital Campus. 1:500 departmental adjacency drawings of the entire development and 1:200 department layouts for many of the key departments were developed with user groups to ensure that the exemplar design truly reflected the Employer’s Requirements. The complex masterplan was developed by HLM to ensure that a structure and rational was applied to the entire campus whilst still allowing the existing hospital to function throughout the new hospital building works. The site also provides a new £50M Laboratory Building with an integrated FM Centre to service the new Hospital.

**At a glance**

**Client**  
NHS Greater Glasgow & Clyde

**Location**  
Glasgow, Scotland

**Services**  
Architecture  
Landscape Architecture  
Technical Advisory

**Scheme Facts**  
Complex masterplan development on live hospital site

1109 Adult acute single bedrooms

240 Children’s bed hospital

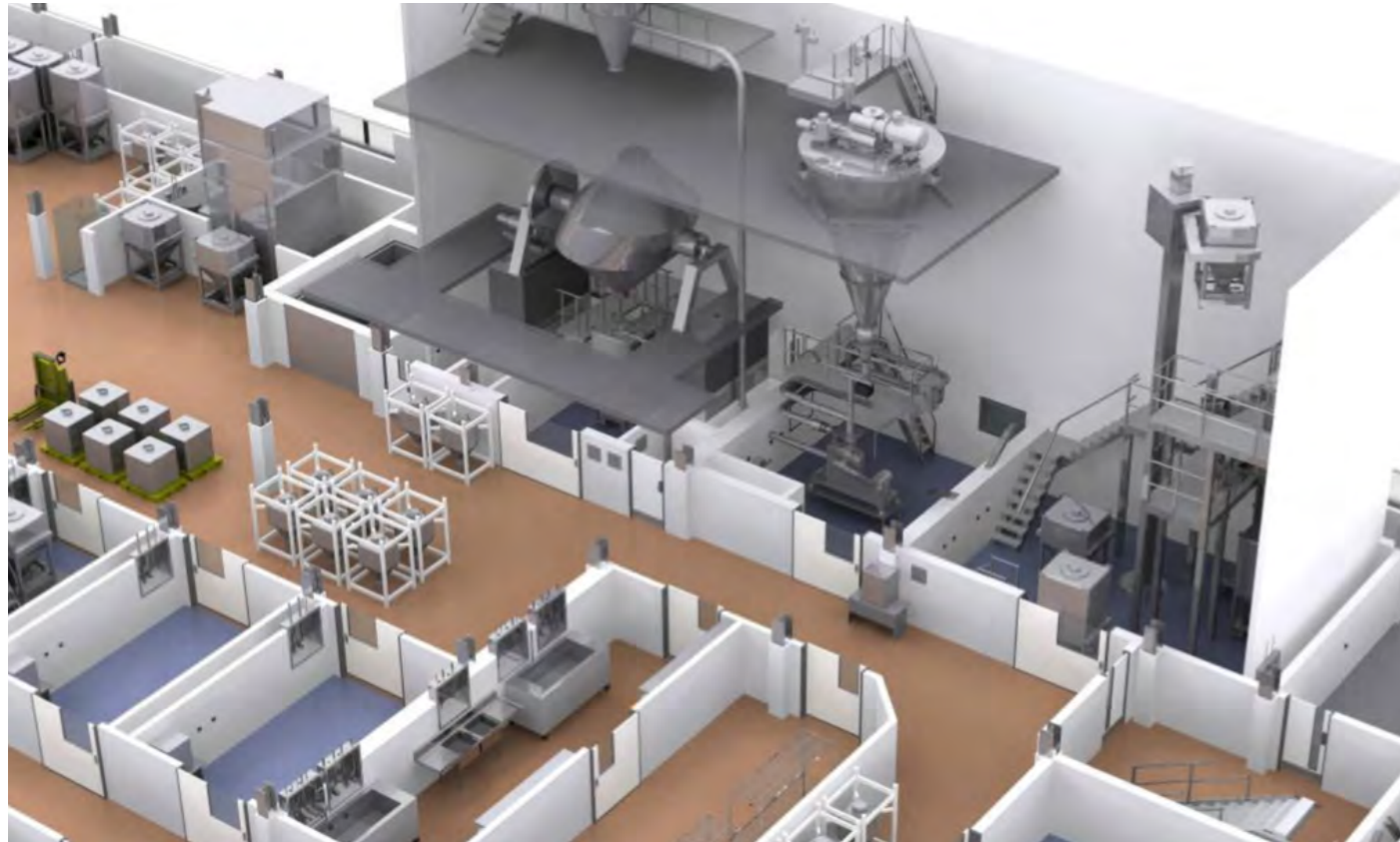


**SAFC Biosciences, Dry Powder Media Facility**  
Irvine, Scotland

SAFC is one of the world's top ten chemical and biologics suppliers providing products and services for use in regulated pharmaceutical and biopharmaceutical applications. The Dry Powder Media (DPM) Manufacturing facility based at their existing site in Irvine which currently manufactures a range of products for pharmaceutical research and industry.

SAFC Biosciences established production facility at Irvine manufactured a range of products for research and industry, and in 2013 identified a specific need to expand the site's capabilities to encompass dry powder manufacture to meet

the demands of a growing customer base in Europe. The new Dry Powder Milling facility and support spaces all designed by HLM are based on SAFC's proven pin milling technologies utilising pre-blending and post-blending technologies, including conical blending and intermediate bulk container blending, to achieve uniformity in line with the US manufacturing capabilities. The facility is designed to house one large scale pin milling operation with a batch size range of 600 to 6000KG and one hybrid scale pin milling suite capable of processing batches from 10KG to 700KG. A single filling suite supports the two production suites.



**Pan Glasgow Decontamination Centre**  
Glasgow, Scotland

The Pan Glasgow Decontamination Centre is Europe's largest, most advanced centre for the sterilization of hospital surgical & medical instrumentation.

Glasgow's hospitals use approx. 12 million re-usable instruments annually, ranging from single surgical instruments and complex theatre sets, to various items of medical equipment. All of this instrumentation has to be collected, decontaminated, tested, repackaged, sterilized and returned to hospital staff quickly to ensure that thousands of patients can be treated each and every day.

Boasting a wide range of unique decontamination and sterilization equipment designed specifically for the new unit, the facility is one of the most advanced and environmentally friendly of its type in Britain. The £9million project has won national awards and the methodology developed has been shared with the NHS Scotland Property and Environment Forum with a view to benefiting other hospitals.



# Our Team

## Healthcare Senior Leadership Team



**Nick Beecroft**  
Director



**Lorraine Robertson**  
Director



**Melanie Jacobsen-Cox**  
Head of Healthcare



**Neil Orpwood**  
Associate Director



**Mohammed Ul-Haq**  
Associate



**Gordon Simpson**  
Associate

## Champions



**Carl Fenton**  
Technical Champion



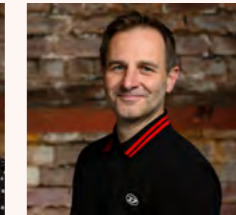
**Kevin O'Neill**  
MMC Champion



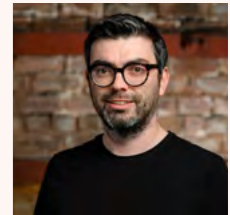
**Annie Cheung**  
Net Zero Carbon Champion



**Alethea Ottewell**  
Head of Landscape  
Architecture



**Andy Illingworth**  
Head of Interior  
Architecture



**Ross Barrett**  
Design Director

## Discipline Leads

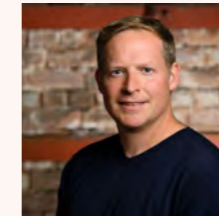
## Regional Studio Directors



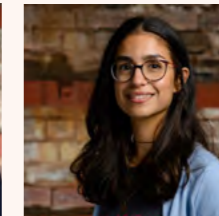
**Nicola McKay**  
Belfast & Dublin  
Studio Director



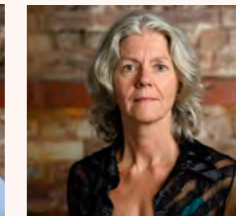
**Gareth Woodfin**  
Cardiff Studio Director



**Ryan Sylvester**  
Glasgow Studio Director



**Catalina San Andres**



**EJ Simpson**



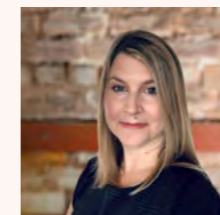
**Jo Dorling**

## Healthcare Support

## Healthcare Support



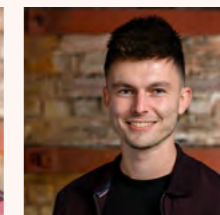
**Richard Williams**



**Kerry Calvert**



**Neil McKay**



**Martin Ross**



**Charles Mahony**

## Summary

Our portfolio of projects showcases our healthcare sector expertise across a range of clinical disciplines and building scales. At the heart of this is our people centric approach to create healing and therapeutic places, alongside a pragmatic rational to provide clinical functions that meet the service needs of today and tomorrow, demonstrating our commitment to improving the wellbeing of our clients and building users.

**Melanie Jacobsen Cox**  
Head of Healthcare

Melanie.JacobsenCox@hlmarchitects.com

m: +44 (0)797 715 3681

t: +44 (0)20 7921 4800

Let's talk about  
making better places.

Our design philosophy puts  
people at its centre. We  
design healing environments  
that speed recovery and aid  
wellness.

We call this Thoughtful Design.



Thoughtful design



[hlmarchitects.com](http://hlmarchitects.com)