

ESSENTIAL LEARNING HEALTH FACILITY BRIEFING SYSTEM



HFBS (Health Facility Briefing System) is the essential toolkit for Healthcare Estate Management Professionals, including Specialist Health Planners, Designers, Capital Project Leaders & Managers.



Healthcare Planning is one of the many essential responsibilities that the Institutes personal and affiliate members actively lead on or engage with in their roles as healthcare professionals. The current need for all healthcare organisations to identify future healthcare requirements at a strategic level both nationally and locally as part of future capital investment plans has never been more important.

IHEEM has partnered with TAHPI as one of our knowledge partners to deliver this certified CPD course which is aimed to introduce the specialised aspects of health facility planning and design to candidates with an interest in developing their skills to take on infrastructure projects in public and private healthcare sectors.

WHAT IS THE HEALTH FACILITY BRIEFING SYSTEM HFBS?

The Health Facility Briefing System (HFBS) is a powerful web-based platform for detailed Project Planning, Briefing, Asset Management and Auditing for healthcare facilities. HFBS is available via annual subscription of in a range of **£495^{+VAT}** for IHEEM members (per module) or **£595^{+VAT}** for non IHEEM members.

Registered users can log onto the HFBS website, access comprehensive standards for Health Design and obtain ready-made, editable "Standard Components" including briefs, room data sheets and layout sheets. Users can assemble detailed briefs, specifications, and schedules on the web without any software and within a secure environment. Once a project is completed it is regarded as "asset" or "property".

Property information from the site, building a department to rooms, finishes, furniture, fittings, fixtures and equipment as well as services are recorded and saved in the system for ongoing management, auditing and

benchmarking. Users can save their work directly to the web and print database-driven richly formatted reports for project or asset -specific use. HFBS is available for private as well as public health projects and assets.

At the project level, users can generate new building budgets complete with furniture and equipment lists and costs before any design work is done.

International and local health facility design guidelines such as the iHFG are built into the system and ready for immediate use.

A range of Power Tools built into the HFBS allow tasks that would normally take months or even years to accomplish, to be carried out in days or minutes. This includes the creation of comprehensive; standards-based Schedules of Accommodation and

And matching Room data sheets. The HFBS is a powerful tool for Rapid Project Definition and Procurement, typically reducing the upfront costs of a packaging a project for tender by 20% and shortening the delivery time by more than half.

HFBS has thousands of trained users, projects, and healthcare properties. More information, instructions, and online training can be found at:

www.iheem.org.uk/training-courses

Information within this document describes the HFBS modules that are on offer exclusively to IHEEM members. For more information HFBS such as subscription methods, pricing, security provisions, external connectivity, developer access etc. can be obtained by contacting: training@iheem.org.uk

The Health Facility Briefing System is comprised of numerous software modules that can be used independently or together. Some of the most relevant modules are shown and explained in this document for reference. These modules are linked as part of one unified system to serve the healthcare industry around the world.

The data structure of HFBS is such that the modules all refer to a "single source of truth" but view and manipulate them in different ways. All Modules have the capability to link to external programs via APIs & web services.

Access to the HFBS modules is provided in a single online portal. When first logging into the HFBS after registering a new account, simply browse to the following location:

Healthdesign.com.au

This screen requires user login via a username/password combination.

The system will then detect the domains accessible to the user and display a list of options to select. You can also register to other options if needed. If the user has recently used one of the modules it will appear as the default selection.

Once successfully logged in, the Home Screen of the HFBS will load. You will be able to select from the wide range of modules & power tools using the icons at the bottom of the screen or the menu across the top.

in partnership with:



For further information on using the HFBS system please check the IHEEM website:

www.iheem.org.uk/training-courses



HFBS MODUEL OVERVIEW

As part of our collaborative working, we are delighted to produce a series of supporting software packages and training. IHEEM has carefully selected the adjacent modules for IHEEM members to have discounted access to at an annual rate. →

IHEEM MEMBERS

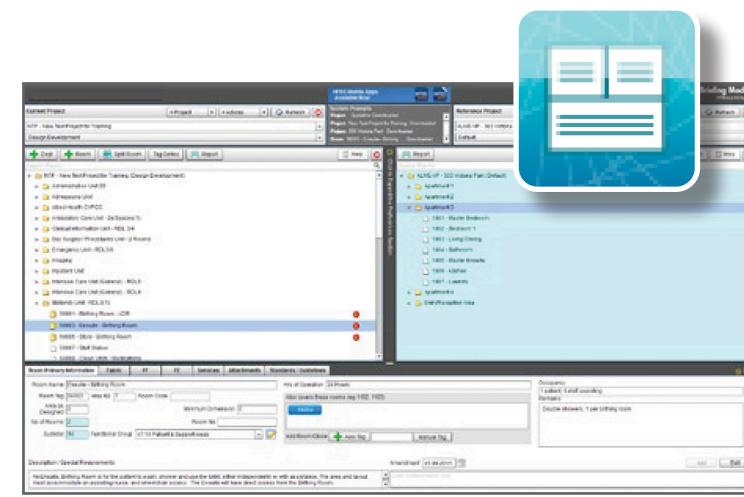
IHEEM Members can get access to these modules for **£495^{+VAT}** per member per module.

This price also includes dedicated training sessions delivered by TAHPI. Also included is 1-year annual subscription to this service.

NON-IHEEM MEMBERS

Non IHEEM members can get access to these modules for **£595^{+VAT}** per person per module. Training sessions will be charged at £200 per person per module.

Ongoing license fee is renewed annually at **£495^{+VAT}** for IHEEM members and **£595^{+VAT}** for non-members.

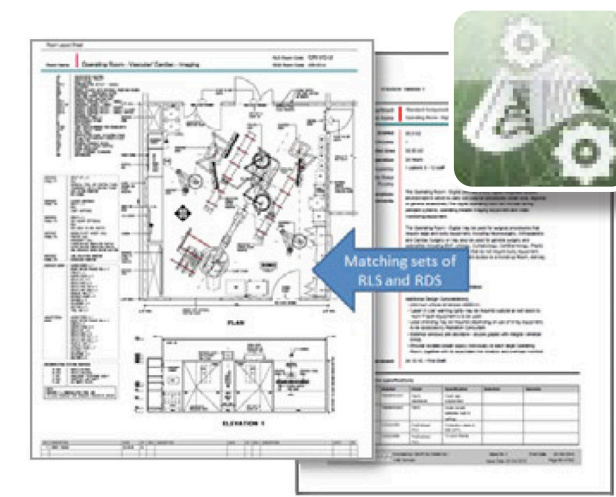


BRIEFING MODULE

The Briefing Module rapidly creates detailed project briefs using the Health Facility Guidelines as the base. All actions are based on drag and drop.

Project hierarchy is defined as:

- Campus> Departments> Rooms
- Room Fabric and Finishes
- Furniture and Fittings

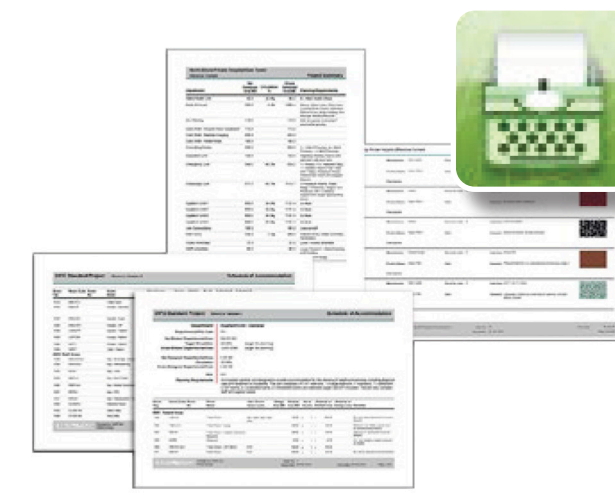


AUTO-SPECS MODULE

The Auto-specs Module takes the Briefing Module contents and expands into detailed specifications. There are standard specification categories and content for each item category as well as unlimited user-defined categories.

Auto-spec features include:

- Integration with UM D NS
- Pre-populated Specs which remain editable
- Apply new field types to entire category
- Link to Products Module
- Link to Purchasing Module
- Direct integration with Briefing Module
- Exportable specification data



PRINTING AND DOWNLOAD MODULE

The Printing Module is integrated into all relevant modules. It utilises over 40 templates to generate a variety of reports for different purposes.

The features are:

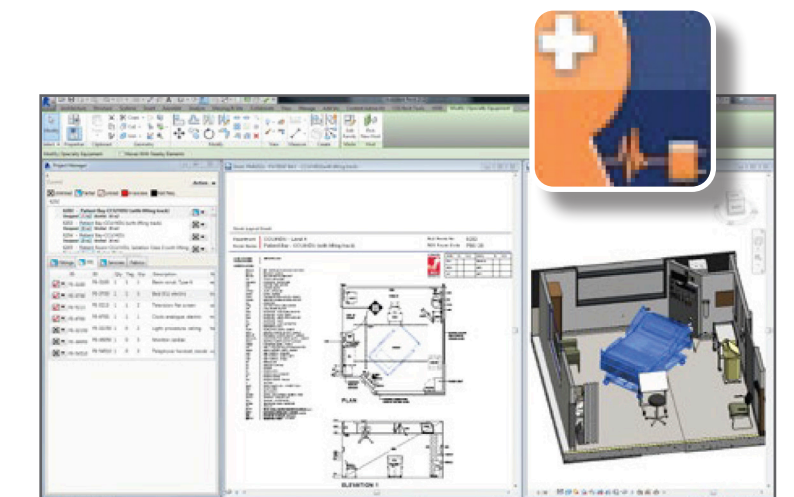
- Reports in PDF, Excel and XML
- User Preferences
- Cover sheets
- User generated date and issue number
- Different groupings and sort orders
- Portrait or Landscape reports
- Domain and Company Logo
- Whole project, department or single room



BRIEFING MODULE FOR IPAD

The iPad version of the popular "Briefing" Module of the HFBS web platform. It allows HFBS users to get editable and live access to their healthcare briefing information when on the go. In a similar manner to the Briefing Module, the user can drag and drop information including whole departments, whole rooms or individual equipment or finishes right into the current project. Other features include:

- Simplified, fast User Interface
- Graphical representation of clone rooms
- Access to all global Domains



HFBS FOR REVIT 2015, 2016, 2017

The HFBS for Revit Module brings the functions of HFBS briefing into Revit and provides two-way synchronisation functionality. The required building contents "Families" can be dragged and dropped from the HFBS briefing list directly into the Model, creating data links. It is also possible to link to existing Families. The system will auto generate Designed Room and Department Areas.

can be dragged and dropped from the HFBS briefing list directly into the Model, creating data links. It is also possible to link to existing Families. The system will auto generate Designed Room and Department Areas.



PRODUCTS MODULE

The Products Module provide facilities to catalogue healthcare related products including:

- Building Finishes
- Furniture and Fittings
- Fixtures and Equipment

These can be uploaded either by suppliers or by the user. They can be grouped in unlimited Legends or Tender options (up to 4 per item). The system will offer product information as well as supplier, Region and Representative information. Contents can be linked to Autospecs and inserted into the Briefing Module.



BUDGETING MODULE

The Budgeting Module starts with briefed department areas, applies the benchmark cost rate and adjusts for RDL + levels of refurbishment. It will then add the external shell template followed by on-costs based on the type of procurement contract selected. The cost is escalated to completion and summarised:

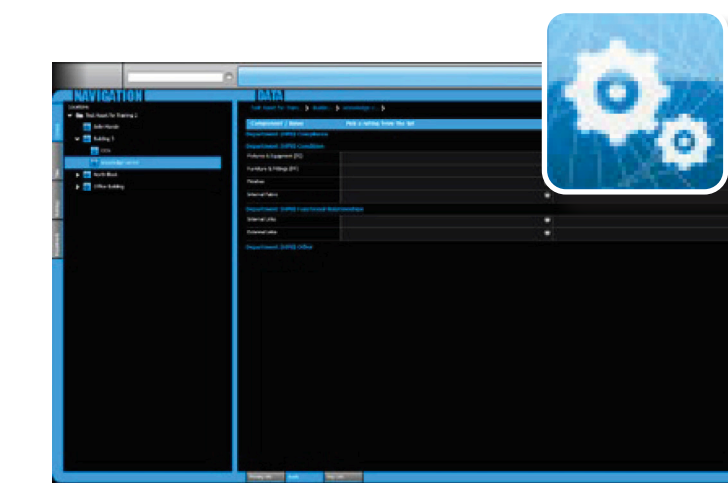
- Net Project Cost
- Gross Project Cost
- Total Project Cost
- Total End Cost



DEFECTS MANAGEMENT MODULE FOR IPAD

Manage the project defects onsite, generate reports and track the history. Generate and look up defects under Date, Location, Category or QR code. Key features are:

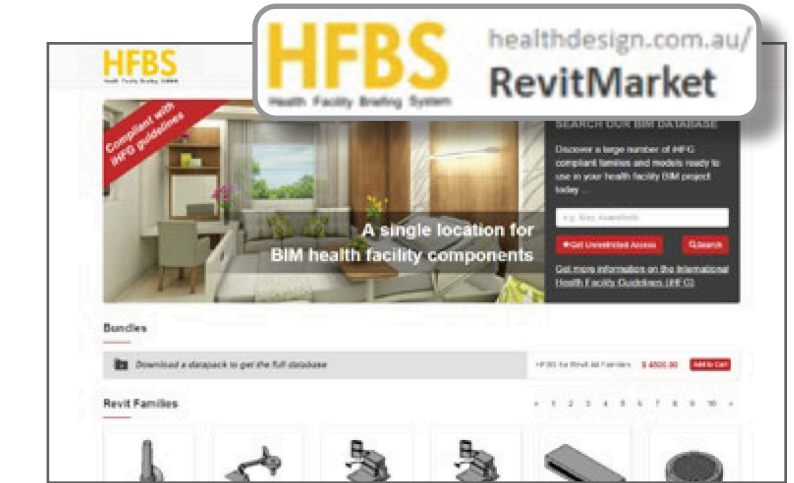
- Severity: From Low to Critical
- Status: Open, Pending, Fixed Rejected
- Sort by: Date, Location, Status
- Take pictures and videos
- Annotate pictures by finger
- Notifications and Costs
- Repeat inspections
- Switch to Briefing for iPad and back to see the actual project requirements
- Locations pre-loaded from the HFBS



PROPERTY MODULE

The Property Module manages health facility data post construction. Once a project is completed, it is regarded as a Property Asset. All information collected through various modules of the HFBS, especially the Briefing and Purchasing Modules become available through the integrated user interface of the Property Module. This module can be accessed on a PC or table using just a browse with a mouse or finger. Information hierarchy includes: Campus> Site> Building> Department> Room Within each area, the same information fields are available as in the Briefing Module plus:

- Service Systems
- External Fabric and Finishes
- Leasing information
- Property Map



REVIT FAMILY MARKET

The HFBS Revit Family Market is an online marketplace containing a collection of over 1700 FF & FE items specifically created and named to be compatible with the HFBS Briefing Module & HFBS for Revit.

These families are in true 3D Revit BIM format. Some items have multiple versions representing brand-specific choice. The features include:

- Work with HFBS for Revit software
- Consistent insertion points
- Generic dimensions, suit most applications
- Same naming system as Briefing Module
- Available individually or as complete set
- Available for download online

GET STARTED WITH HFBS

Visit the IHEEM website: www.iheem.org.uk/training-courses to book onto the next training course.



For more information about IHEEM or membership:

02392 823 186



office@iheem.org.uk



www.iheem.org.uk



This course is delivered in partnership with:

