

Walsall Manor Urgent & Emergency Care

IHEEM West Midlands Progress Talk & Tour

Jessica Taylor – Business Development Manager

Richard Myatt – Contracts Manager

Becky Phillips – Design Manager

Lee Mason – M&E Project Manager



- Introductions
- Overview of Project
- Challenges & delivery solutions
- Design Process & stakeholder engagement
- M&E Services strategy and installation
- Social Value
- Questions



Project Overview & Delivery Challenges



Project Overview – Walsall Urgent & Emergency Care Department

- GIFA – 4941.7m²
- CFA Piles
- Steel Frame
- Composite decks
- 247 Rooms
- 80 week duration
- £30.5m GMP





- Main Entrance
- Urgent Treatment Centre]
- Radiology Digital X-Ray Facility
- Emergency Department
 - Majors
 - Resus
 - RATs
 - Children's ED
- Paediatric Assessment Unit

Project Overview - First Floor



- Acute Medical Unit
- Shell Space



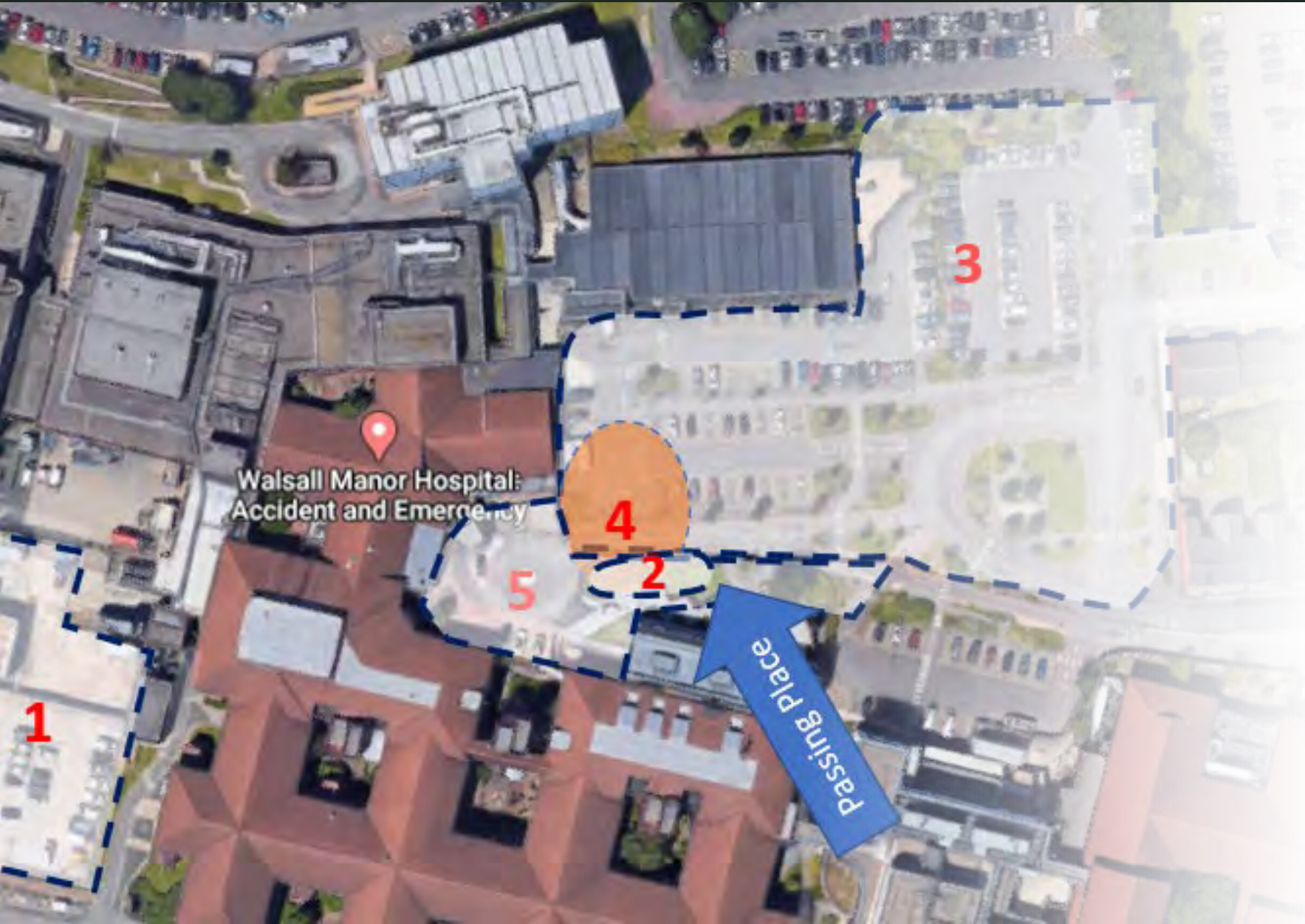


- **Same Day Emergency Care Unit**
 - Frailty Unit
 - AEC
 - Acute Clinic Suite
- **Imaging Suite**
 - CT Scanner Space
 - 3rd Digital X-Ray Space
 - Control Rooms
 - Waiting Area

Challenges & Delivery Solutions

- Complicated Enabling Works Programme
- Business As Usually
- New Infrastructure
- Archaeological interest
- Mine Workings and Mine Shaft





- 29 week Enabling Programme
- 5 Phases

Challenges & Delivery Solutions

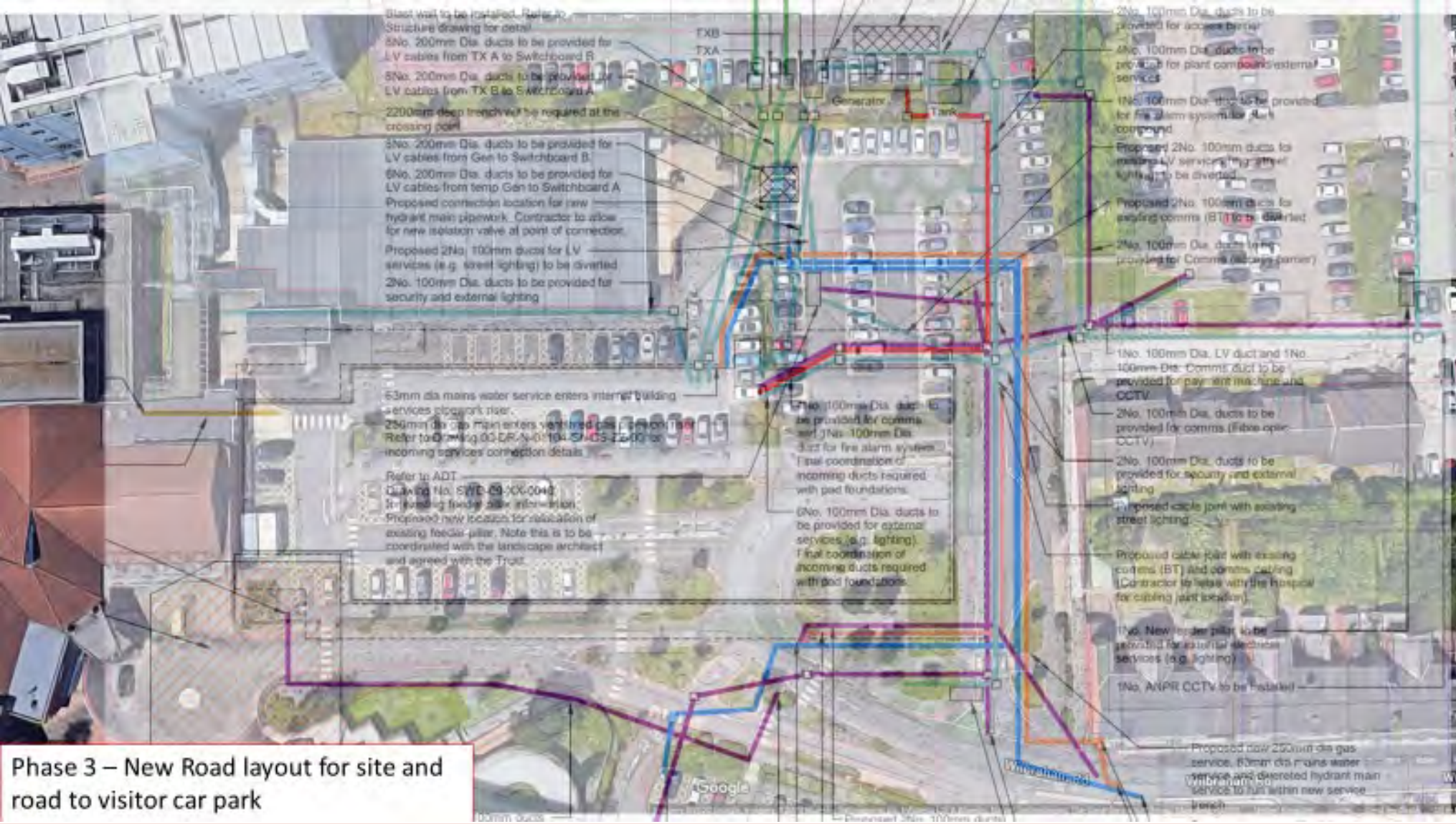


- Ambulance Route
- Public / Patients Access
- Staff Access
- Contractor Access

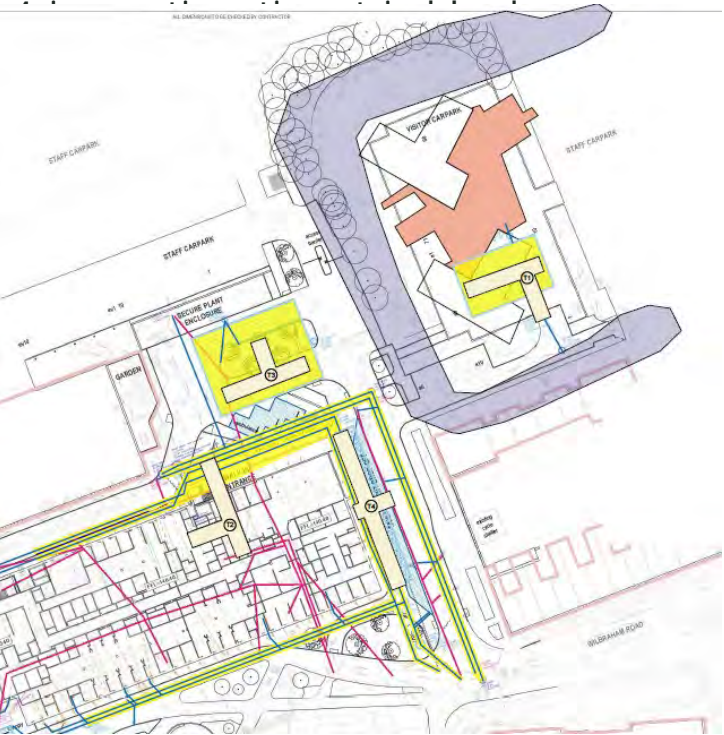


Challenges & Delivery Solutions

- 2 New HV supplies
- New Mains Gas
- New Water Main
- Fibre Optic



- 13th Century Medieval settlement
- Mined during the 19th Century



Challenges & Delivery Solutions



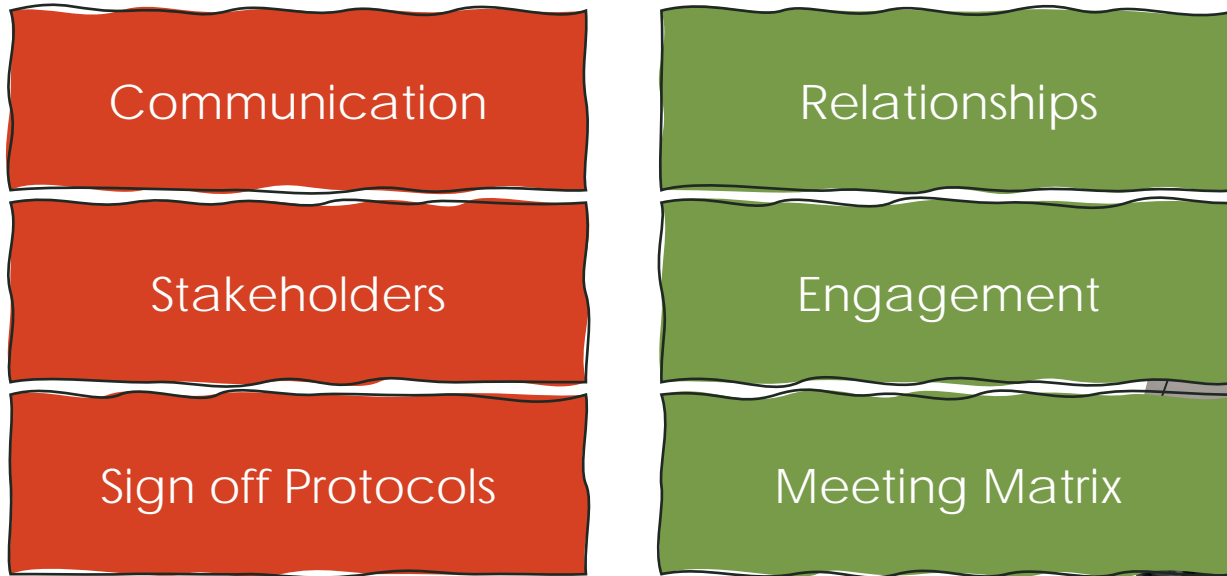
- 30m deep shaft
- 3m void at 27m below ground

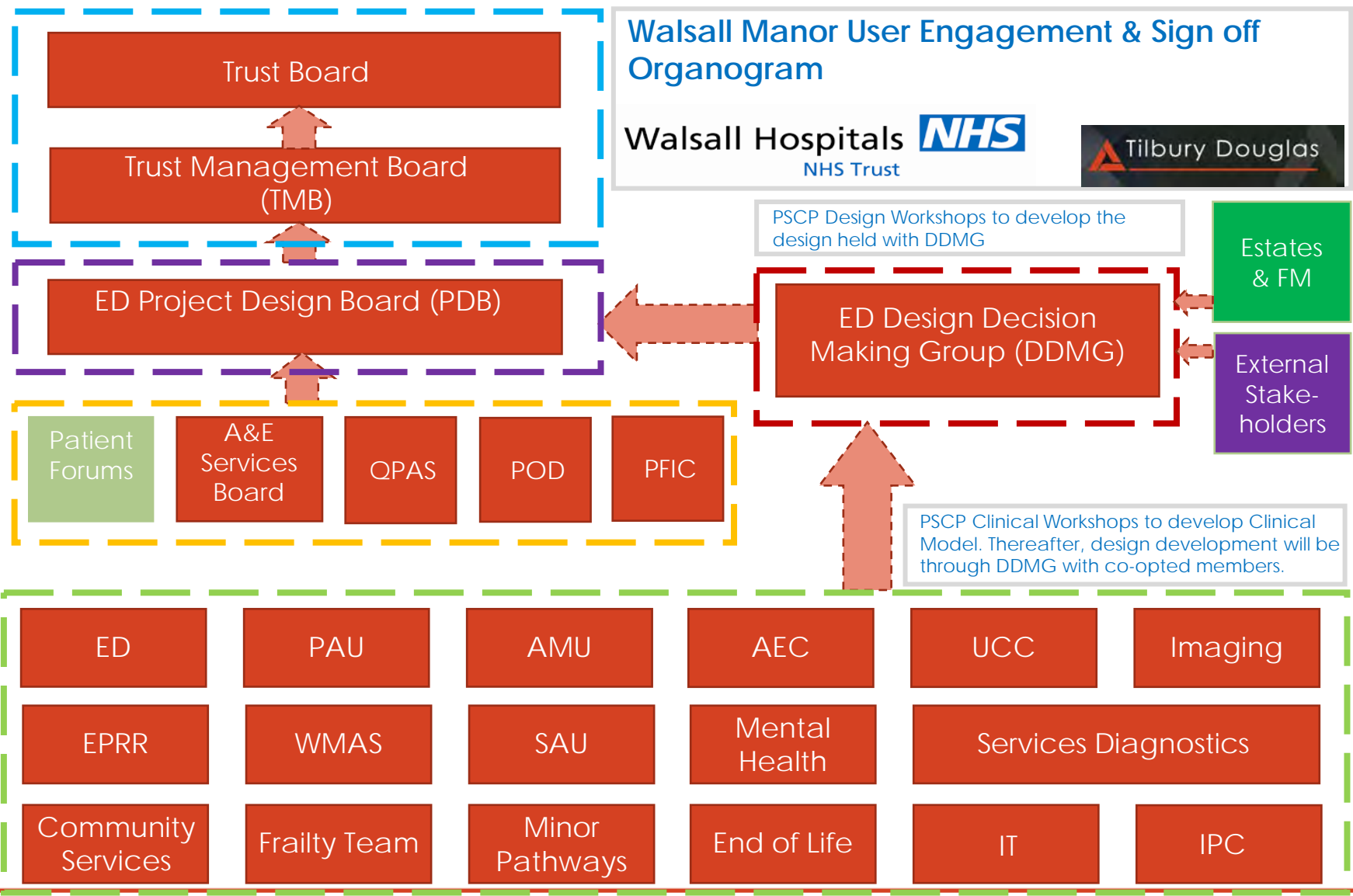


Design Process & Stakeholder Engagement



Communication and relationships with Trust have been key to project success





Engagement Protocols

- Strategic direction and OBC / FBC / GMP approvals
 - PDB Trust Sign offs ahead of P22 Gateways i.e. Stage 2, 3, 4 etc
 - 1:200, 1:50, SoA, Finishes, M&E Strategy, Planning etc
 - Regular Design Reviews for 1:200s & 1:50s, with Task Groups and User Groups feeding into sessions via DDMG Reps (Co-opted members)
 - Key Sign offs required from this group.
 - Commissioning Boards & Forum representatives to attend Project Design Board to have overview of Project, but no direct contact with design team
 - Clinical Workshops with HCP to develop Clinical Model
 - 1:200 Layout developed with DDMG - feedback to each dept via co-opted reps that sit on DDMG.
- Legend:**
- Patient Forums: Standalone Events with PSCP TBC
 - Estates & FM Workstreams to be fed into DDMG
 - External Stakeholders to be fed into DDMG

Clinical Design Review

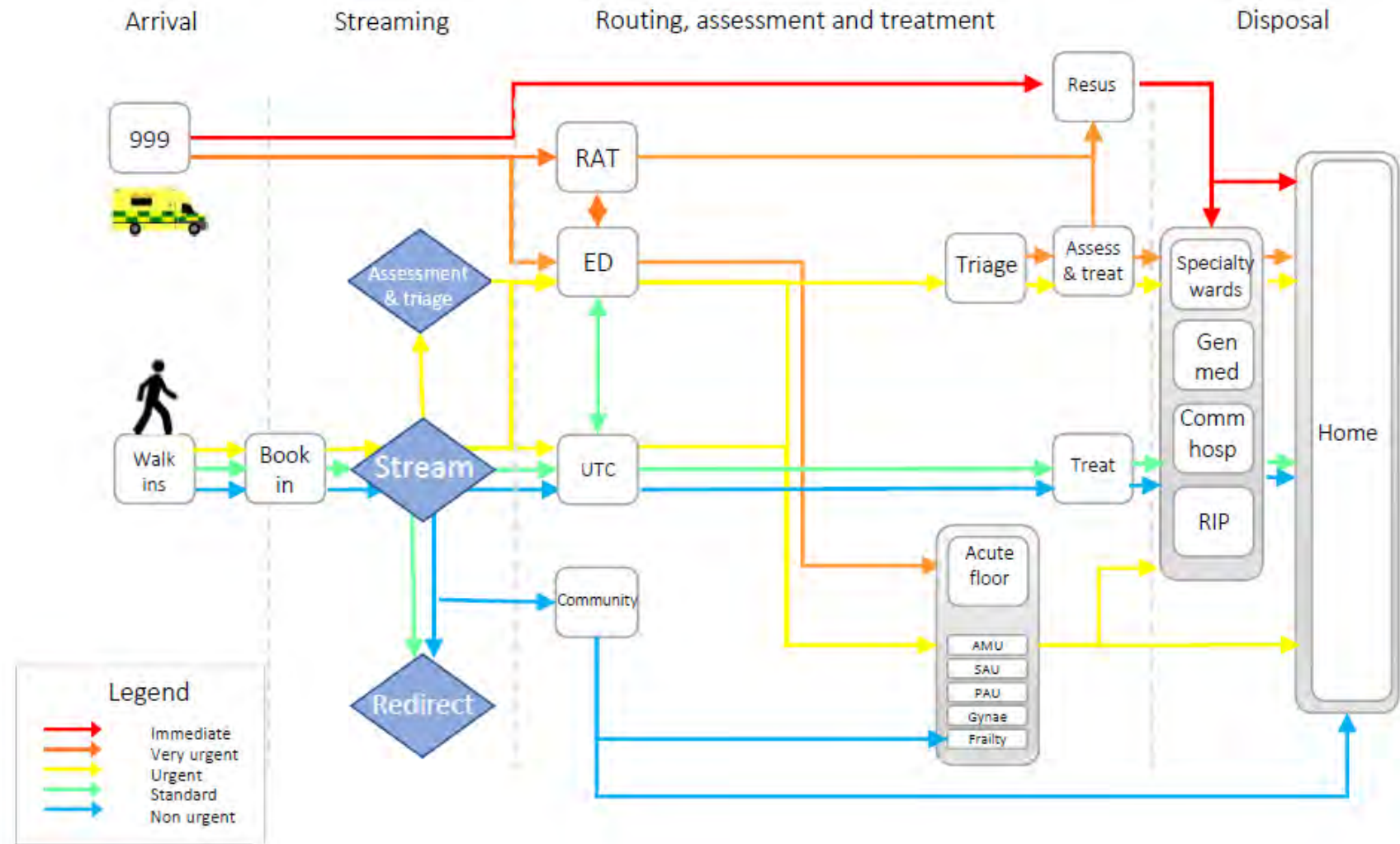


You said, we did:

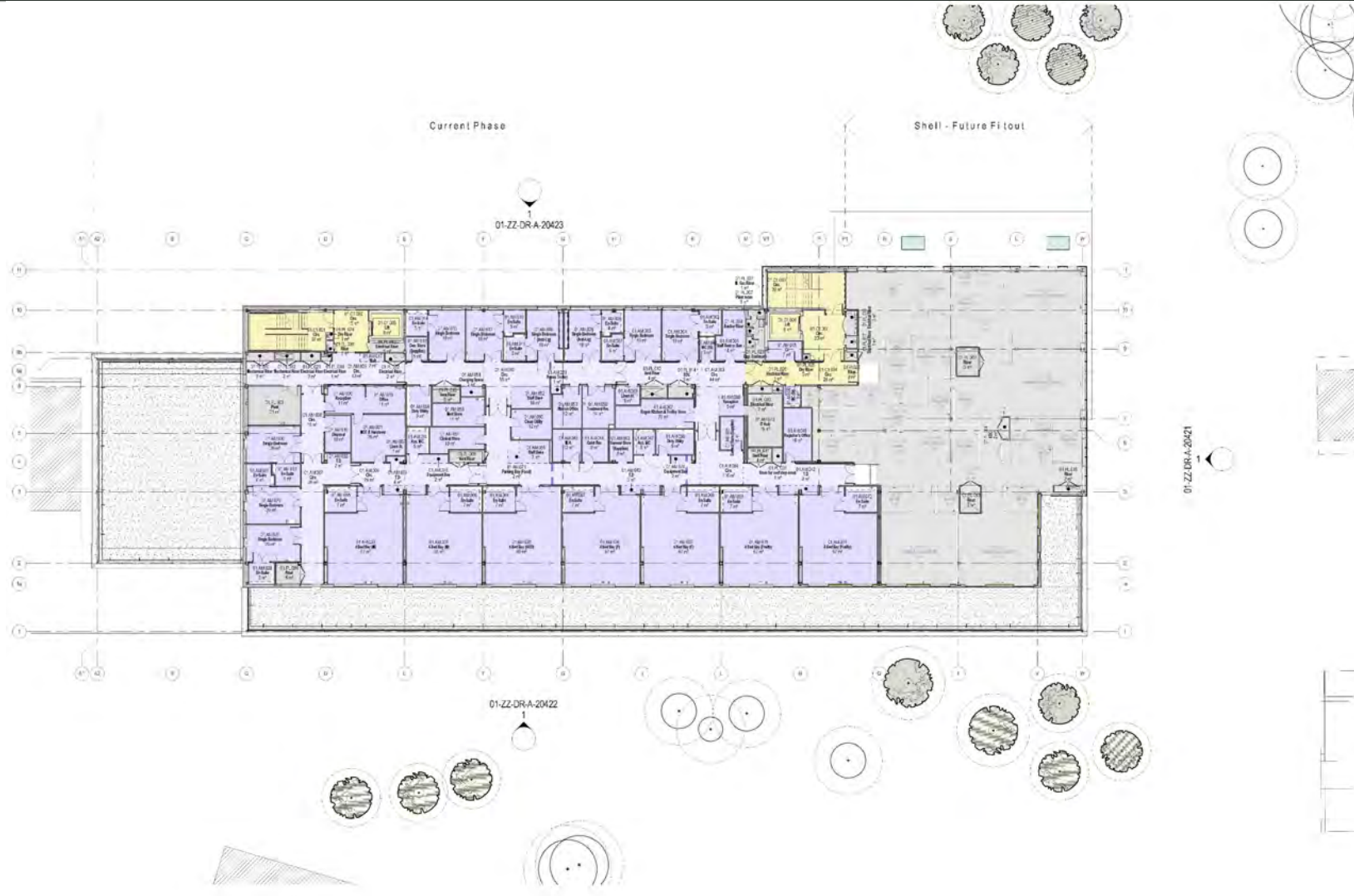
- Hearing loops *”*
 - “ These are integrated into all reception desks. Trust will have mobile hearing loops too
- Signage head height:
 - Avoid above doors *”*
 - Large print *”*
 - “ These have been moved to sides of doors where appropriate (department entrances)
- Require a mix of visual and verbal call systems *”*
 - “ There are plenty of screens within waiting areas and this will have audio call



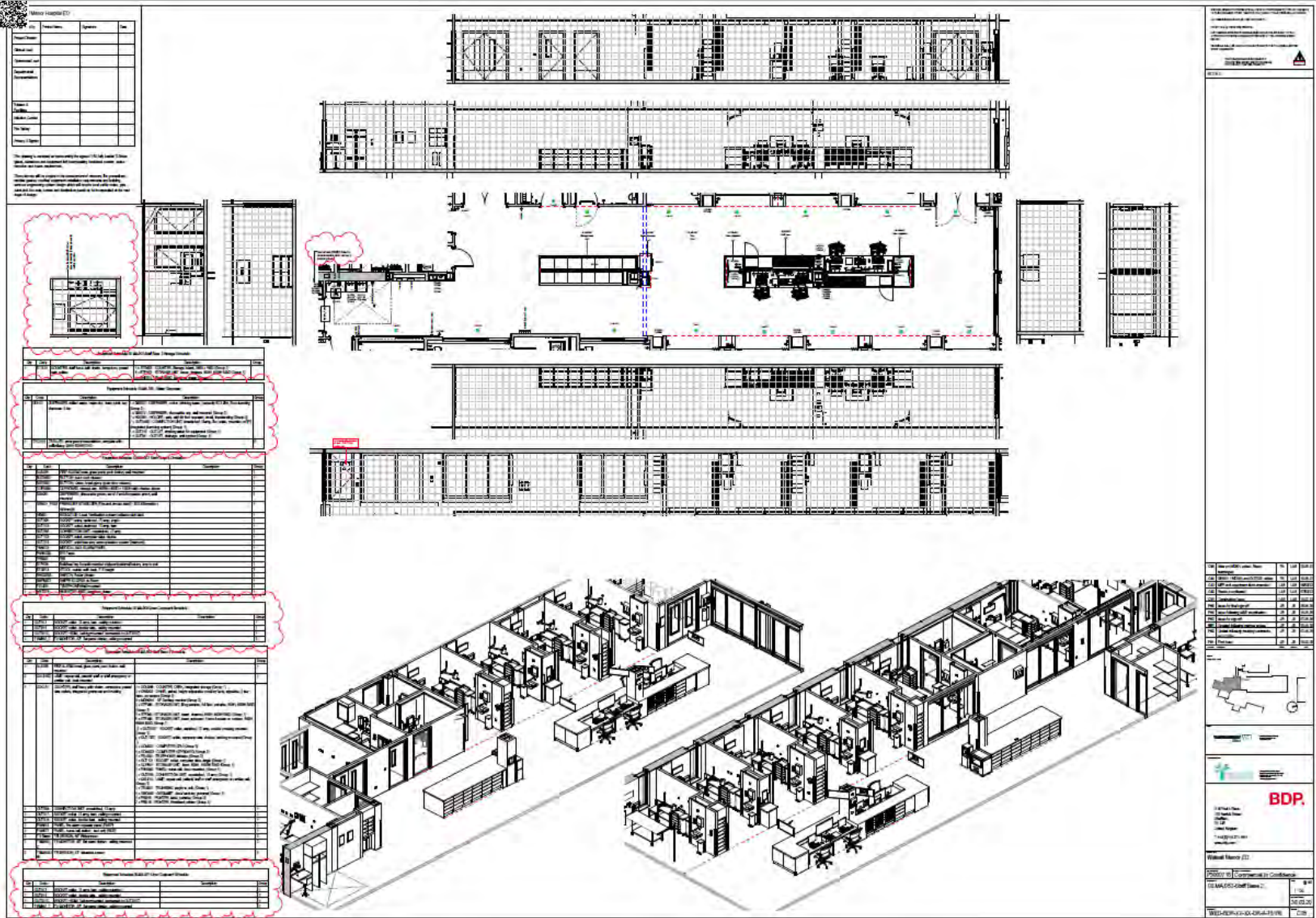
- Activity Modelling
- Patient Pathways
- Clinical Model
- SoA
- Site Constraints
- Concept Design





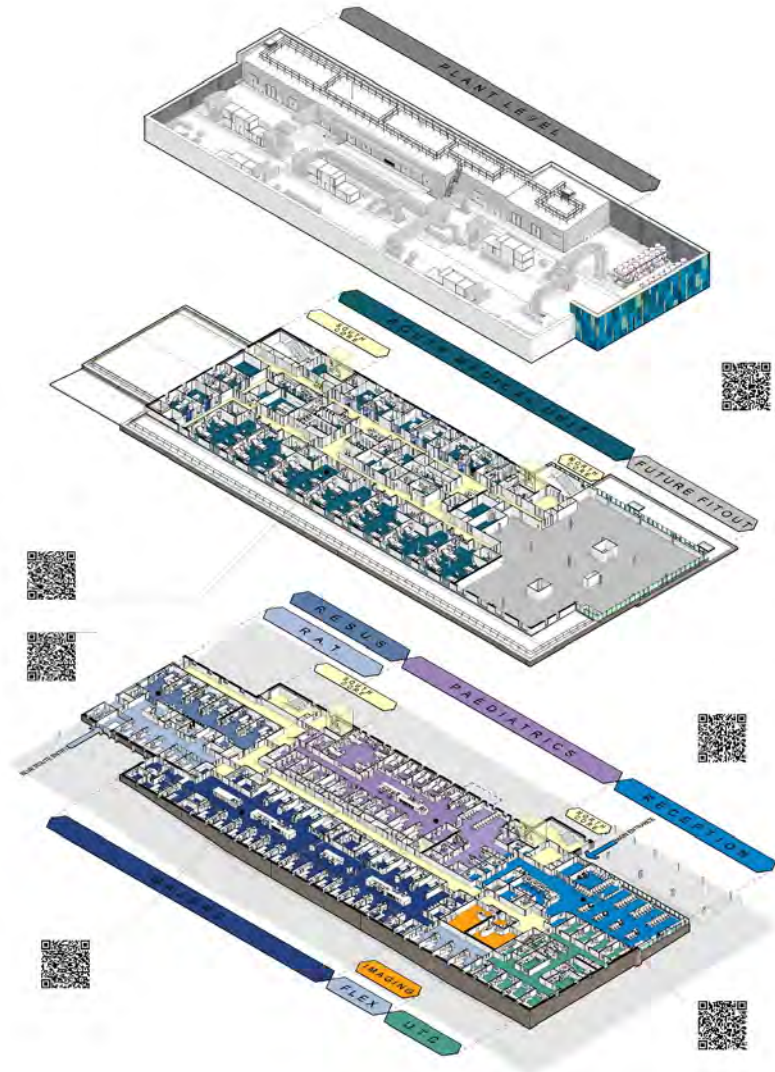


Staff Base & Storage - Majors



The image displays a set of architectural drawings for a 'Staff Base & Storage - Majors' project. The drawings include:

- Top Section:** A long horizontal section showing the structural layout of the building.
- Middle Section:** A detailed cross-section showing the internal layout, including desks, chairs, and storage units.
- Right Section:** A vertical section showing the building's profile and structural details.
- Bottom Section:** An isometric view of the building, showing its 3D structure and internal furniture.
- Left Side:** A series of tables and schedules, including a 'Minor Details' table at the top, followed by several detailed tables with columns for item descriptions and quantities.
- Right Side:** A vertical column of information, including a title block at the top, a table of contents or schedule, and a logo for 'BDP' at the bottom.



PLANT FLOOR

FIRST FLOOR

Acute Medical Unit new area for 4 hours clinic

- Seven 6-bed beds with en-suite
- Two single beds with en-suite, of which two are wheelchair accessible
- Two single beds - shared en-suite around the beds
- Six reception desks, one for each unit
- Reception kitchen and toilet area
- One medical health room and one social room

GROUND FLOOR

Major Paediatric Urgent Treatment Clinic, Rapid Assessment Treatment and Rehabilitation

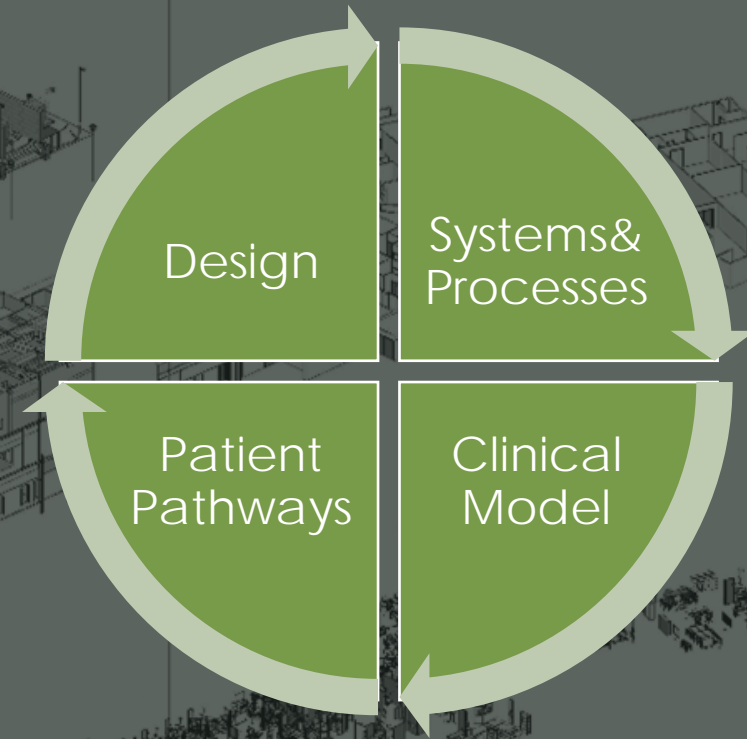
- Large waiting area and hospital by train entrance
- Mental health room by reception
- Four Assessment rooms by reception
- Floor urgent care cubicles with four rooms as part of the site area
- Two imaging rooms
- Twenty Four Menor cubicles, of which one for children's use and eight are one treatment and one for solution cubicle
- Twelve paediatric cubicles, of which one cubicle, one for urgent and one for minor treatment
- One 6-bed day paediatrics assessment bay
- Staff suite by five-minute entrance
- Six Rapid Assessment cubicles
- Six 6-bed bays





Communicating with BIM

#morethananewbuild





M&E Services
Strategy &
Installation





Building Performance and Energy Efficiency

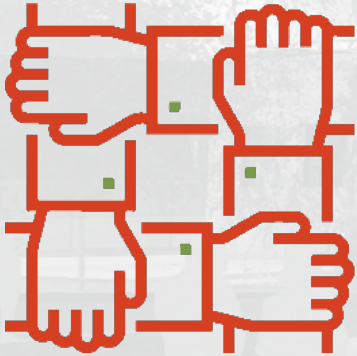
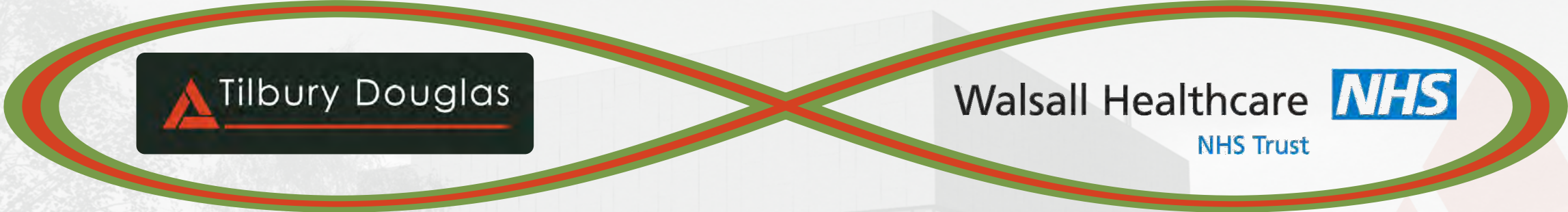


MEP solutions
reduced
carbon by
over

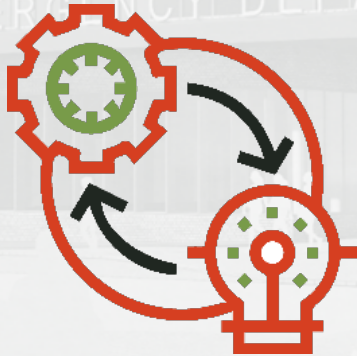
20%

Or 10.6
KgCO₂/m²





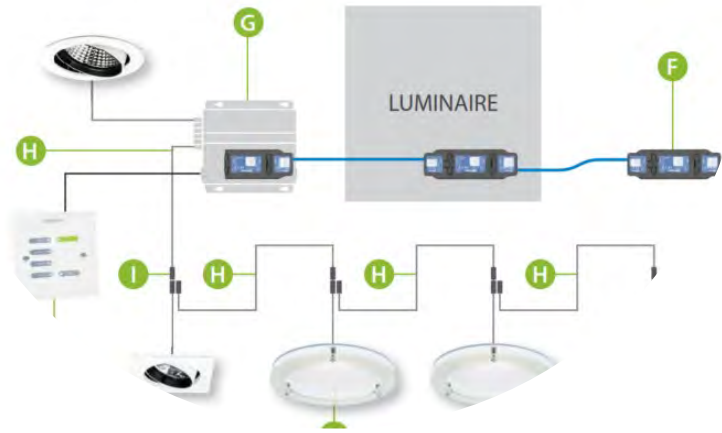
Early engagement with Martin Trentham / Bradley Fletcher (TDE in-house design)



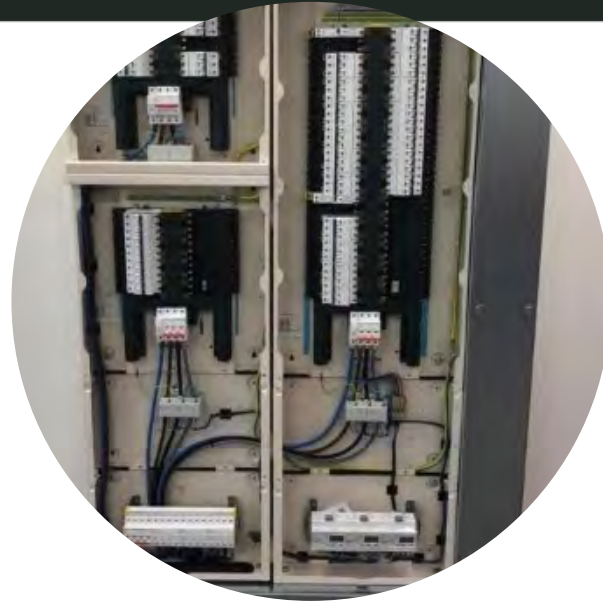
Team Review to produce a strategy on how we wanted to delivery the project.



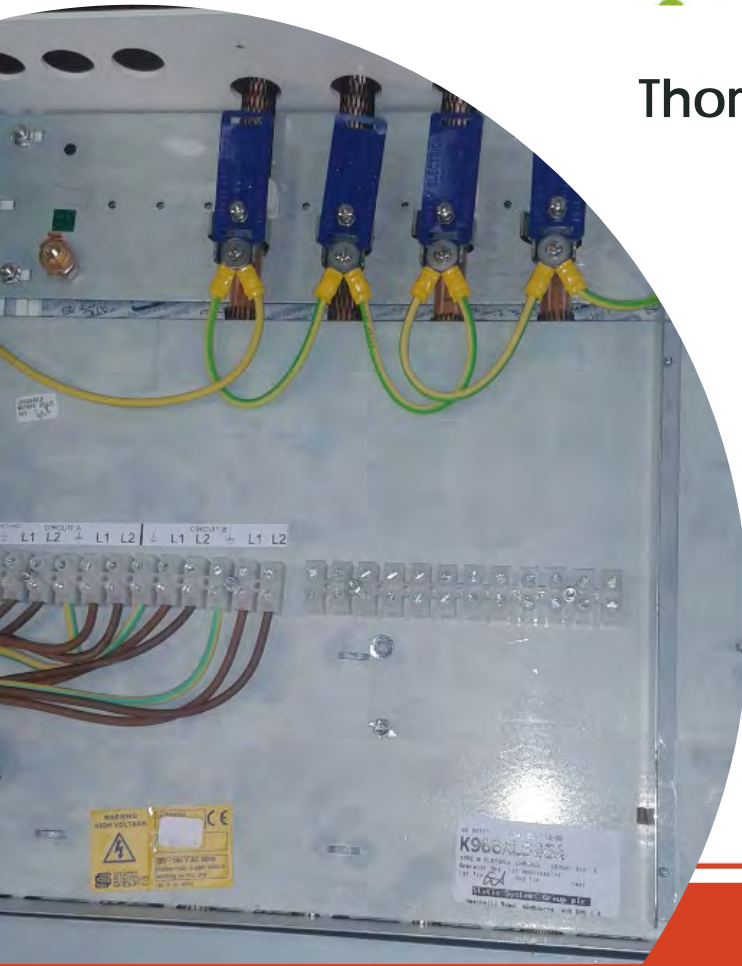
Supporting PQS/PM and NHS on their commitment to MMC (>50%)



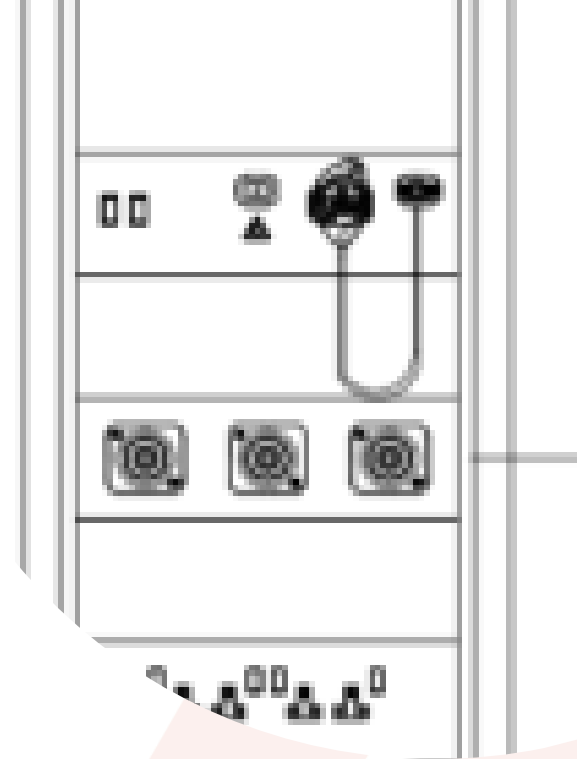
Thorlux Lighting



50No distribution boards

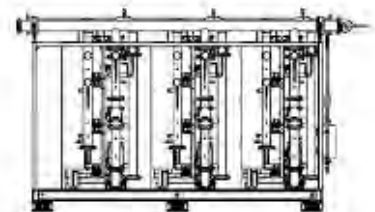
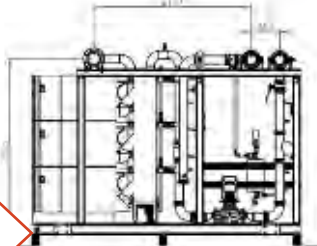
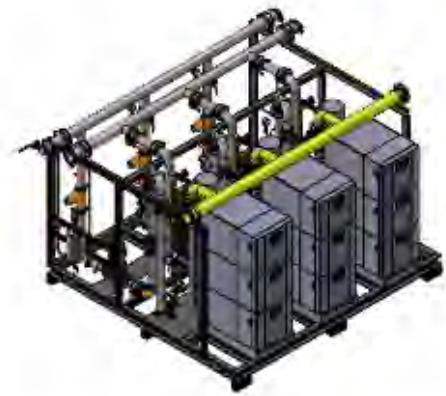
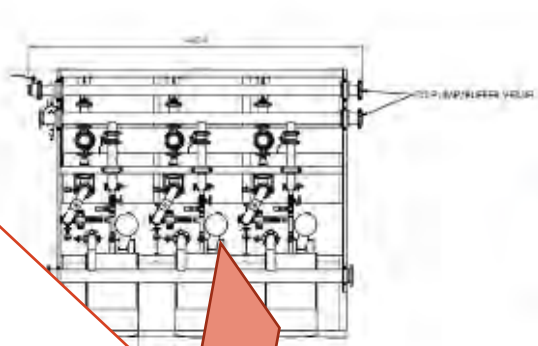
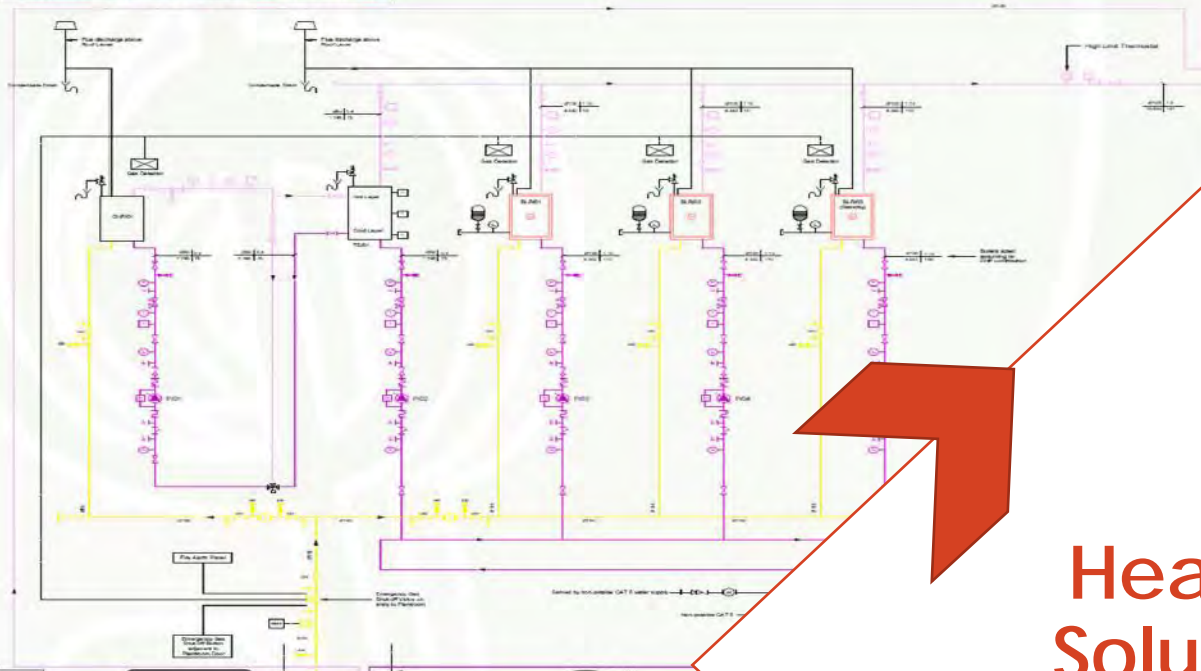


110 No Static
Bedhead trunkings



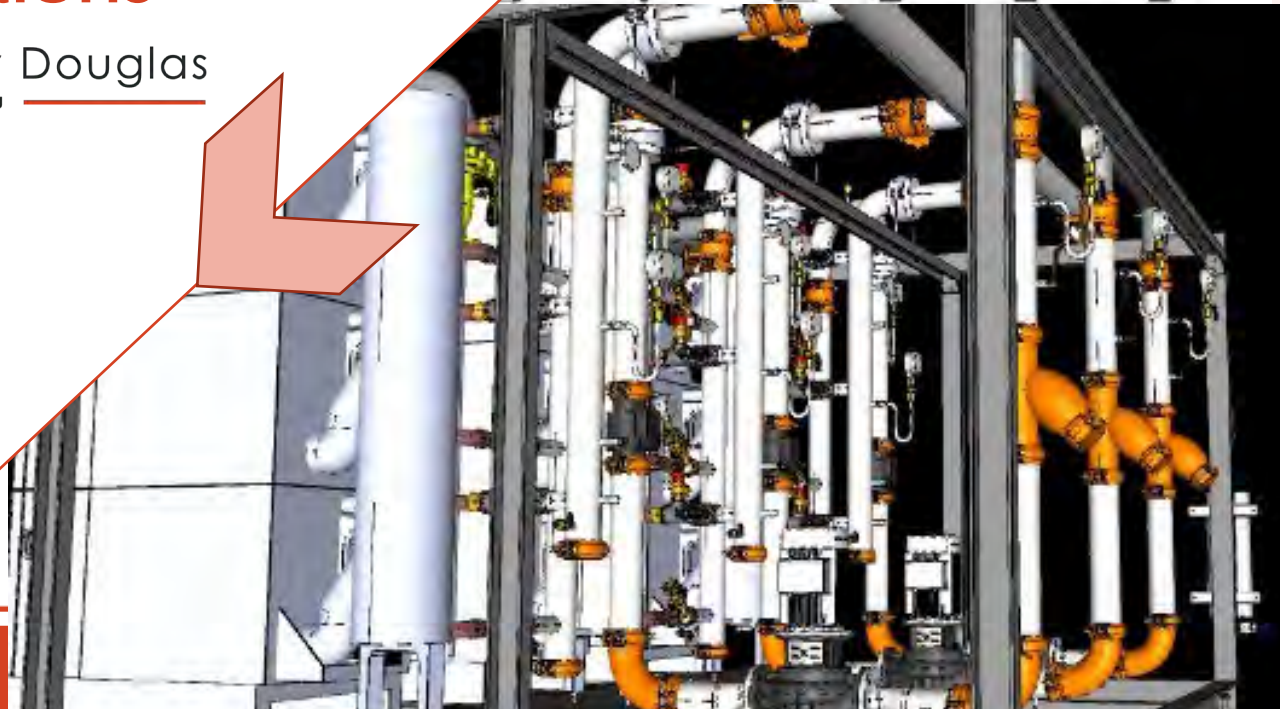
**Building Performance and
Energy Efficiency**

Boiler skid scope schematic

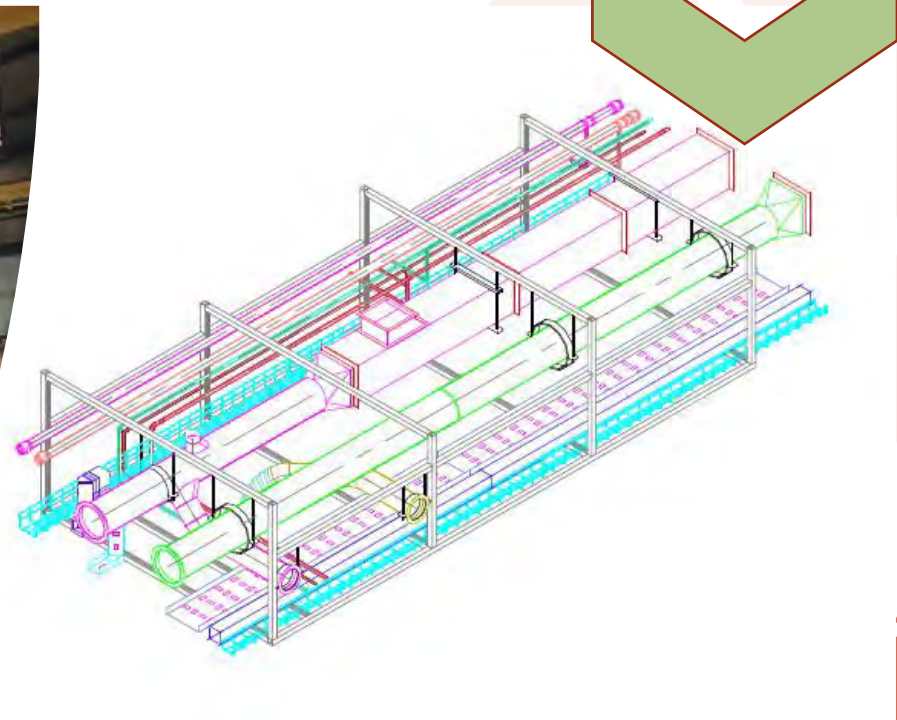
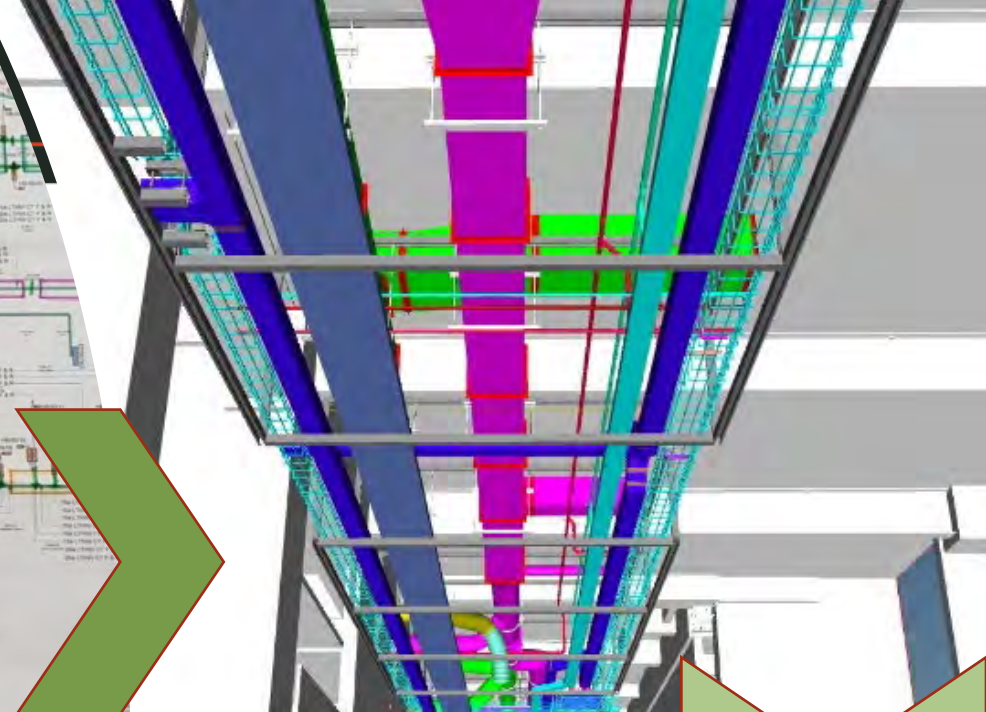
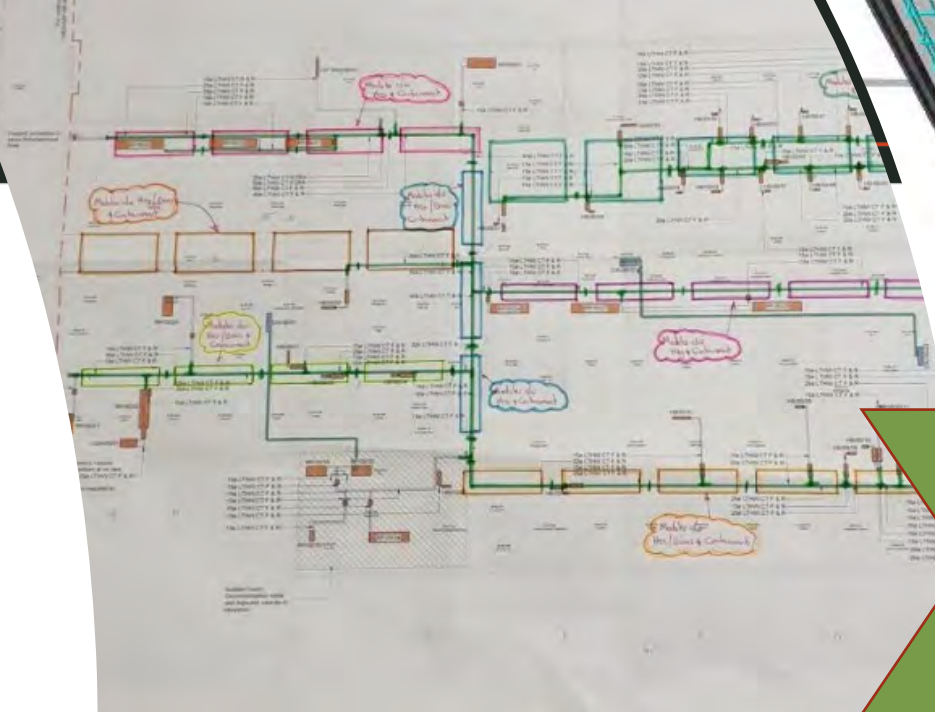


Heating Solutions

 **Tilbury Douglas**
Engineering

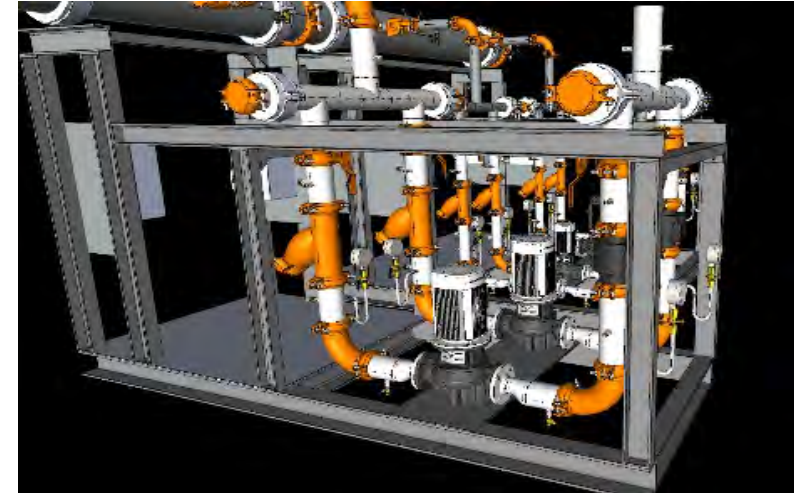


Horizontal Floor Modules



What does MMC mean for our Business?

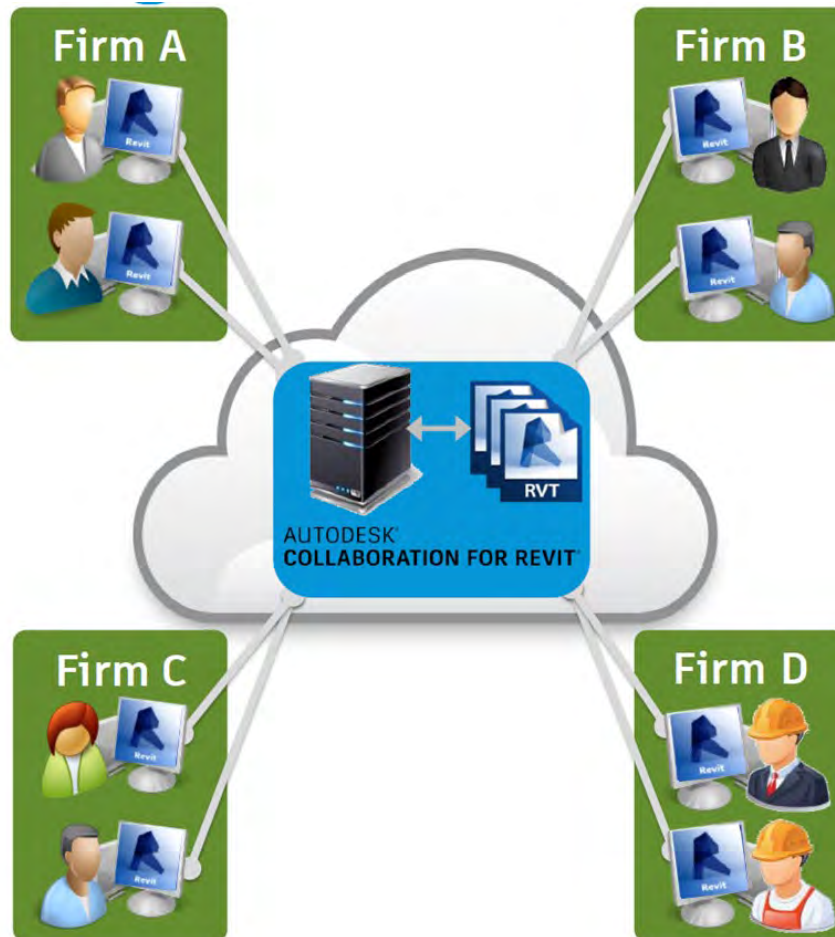
- Faster Construction
- Better Quality
- Better Visibility of Pipeline
- Less Waste
- Low Carbon
- Less Noise, Dust and Disruption
- Improved Health and Safety During Construction, With a Larger Proportion of Trades Working Offsite and Fewer Operating at Height
- Predictable Performance
- Lower Operational Costs
- Delivery Certainty
- Digitise Where Possible





BIM Collaboration Pro

- Shared Working
- One source of the truth
- Common Platform
- Clash Detection



- Designers
- Specialists' / Suppliers
- Modular Builders

Matterport



Scan a Space

- A completely 100% accurate 'As Fitted' record of the building at handover
- A 3D Model incorporating Asset Information for Facilities Management
- Virtual Construction Project Progress Reviews & Logs by all stakeholders



Upload to Cloud

- A 3D Model of an existing building which can generate CAD Plans & Revit Model(s),
- Construction Sites & Finished Building Orientations,
- VR Walkthroughs (various options),
- High Resolution Images & Video Walkthroughs



Share and Engage

Social Value

Apprentices



MOD
Trainees



72% within 30 miles
£19.7m spend locally


Walsall
Emergency
Acute Me
Coming
Thank
For Your Pa
Walsall Hea

T-levels & Careers
Days with Walsall
College



Fundraisers

Tilbury Douglas
Mental Health
Awareness Week
9 - 15 May 2022
#IveBeenThere

Mental Health Session: 10th May 2022
There will be a charity box to help raise money for

Should you wish to donate



Local
Kickstarters

