



STANBRIDGE

CELEBRATING 65 YEARS

## Nursing & Residential Care Homes



## Infection Control Equipment

*Utensil washer disinfectors*

*Stainless steel sluice units*

*Easy clean utensils*

*Stainless steel work surfaces, drainers, shelves and utensil Racks*

*Stainless steel deep sinks, dedicated handwash bowls, taps and traps*

*leaders in infection control equipment for 65 years*

**Stanbridge Ltd** Unit 78, Powder Mill Lane, Questor, Dartford, Kent, DA1 1JA

Tel: 01689 806500 email: [sales@stanbridge.co.uk](mailto:sales@stanbridge.co.uk) Web: [www.stanbridge.co.uk](http://www.stanbridge.co.uk)

Stanbridge reserves the right to make design changes without notification



Jan 2022



Stanbridge specialises in sluice room and infection control equipment.

CELEBRATING 65 YEARS

## SLUICE ROOM DECONTAMINATION

OPTIONS NOW AVAILABLE!

Ensure you are supporting your residents & staff by practicing effective IPC Measures regularly

Stanbridge now offer a decontamination service to help minimise the risk of infection and to assist with the control and containment of outbreaks.

We can decontaminate your facilities using the very latest in electrostatic spraying technology

Contact us today :

✉ [Sales@Stanbridge.co.uk](mailto:Sales@Stanbridge.co.uk)

☎ : 01689 806 500

💻 [www.Stanbridge.co.uk](http://www.Stanbridge.co.uk)



available on our website



*Prices for other rooms/Areas available upon request*

*Contact us today for more information*

FOLLOW US ON -



Stanbridge Limited, Unit 78, Powder Mill Lane,  
Questor, Dartford, Kent, DA1 1JA  
Tel +44 (0) 1689 806500 [www.stanbridge.co.uk](http://www.stanbridge.co.uk)



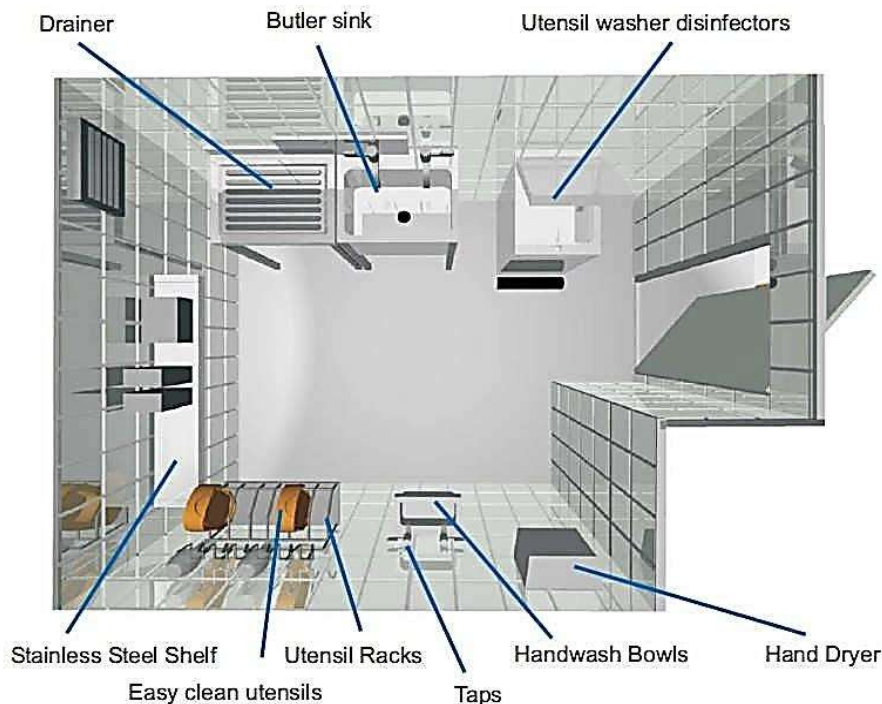
## Stanbridge specialises in sluice room and infection control equipment.

CELEBRATING 65 YEARS

Established in the 1950s and credited with pioneering design for modern washer/disinfector machines, Stanbridge has the expertise and practical experience that can assist and reassure in every situation.

- infection control solutions for hospitals and care homes
- involvement in development of infection control procedures
- advising on sluice room requirements
- training programmes for engineers
- advice on HTM 2030 and BSEN ISO 15883-1 and -3
- participation in seminars and study days
- support and encouragement for the care sector

The comprehensive Stanbridge range includes washer/disinfectors, stainless steel products for sluice rooms, bespoke equipment and fittings, and utensils.



FOLLOW US ON -





## PLANNING A SLUICE ROOM

### Preface

These notes are about controlling infection.

Guidelines and monitoring procedures are being progressively imposed to develop quality care awareness.

The control of infection covers a wide range of procedures in adult care, both domestic and Nursing where the transfer of infection between residents in group living is a natural hazard. Human waste is a significant source of this risk, but managed routines particularly in the dirty utility room will reduce any cross contamination to acceptable levels.

### Introduction

We have produced this information to provide a brief guide to assist those concerned with the planning and equipping of sluice rooms.

All establishments concerned with care, regardless of size, have to provide facilities to ensure the hygienic disposal of human waste.

### Planning

Ideally a sluice room should be planned at the outset just like the kitchen and the laundry. The number of sluice rooms will depend on the number of floors and the layout of the building. The functions and the services required will have to be taken into consideration, such as:

- Hot and cold water inlets
- Power supplies and voltages
- Soil outlets and vents
- Floor and wall finishes
- Adequate ventilation

Remember that a sluice room can be used 24 hours a day, so a site should be chosen where noise from water or clattering hardware is not a nuisance.

Wherever possible the room should be divided into 'clean' and 'dirty' areas. Each room needs a sink, preferably with a drainer. Taps are a source of contact by hands and automatic taps or those with elbow levers are preferred. Push button or foot operated soap dispensers are recommended.

Dedicated hand washing facilities are needed.

### Equipment

The term 'Sluice Room' is used loosely to define a utensil washer/disinfector with a back up of a WC and a designated sink for washing.

The automatic washer/disinfector for commode bucket, bedpan and urinals is, however, a far more sophisticated piece of hardware than has long been the norm in NHS hospitals. The new generation of machines can carry out the functions of both slop hopper and washer/disinfector.

The term 'disinfection' is used to describe the 'bug kill' cycle. Moist heat is used from an incorporated steam generator to heat each utensil. It is NOT liquid from a bottle.

Our machines have been engineered over years of testing, establishing effective cleaning and disinfecting of the specific utensils used in human waste disposal.

Designed for a function, normally they will accommodate bedpans, commode buckets, urine bottles or various bowls/utensils. The machines open with a pneumatic foot pedal to give the operator full hand control of the receptacle. They have cold and hot washes, the cold wash removes the soil, the hot wash removes extra stubborn waste, then items are disinfected. The minimum requirement is 80 deg. C for 60 seconds. The machines usually attain 90 deg. C+ for 70 seconds, followed by a cold rinse to cool the receptacle. Interlocks prevent opening during the cycle. Utensils removed from the machine should be placed on racks adjacent to the machine - this is the clean area.

If used soiled items have to be left prior to washing they should have a separate 'dwelling place' - not in the clean area. A trolley or stainless steel worktop should be provided.





## The CS1 ST WASHER / DISINFECTOR



The Compact Superior 1 washes and disinfects utensils one at a time and is specially designed for the small nursing home where space is limited.

The CS1 provides an effective infection control barrier which protects residents and staff from the risk of cross infection and management from potential liabilities. All Stanbridge washer/disinfectors can include the DEOSCALE water treatment system to control limescale build-up and reduce maintenance

Stanbridge utensil washer disinfectors are manufactured in compliance with the recommendations of British Standard 2745 and to meet the detail requirements of inspectors of the Water Supply Undertakings

Stanbridge Ltd is approved under BS 5750 for quality assurance.

WRAS Approval No. 0310064 Internal break tank has a type 'A' air gap supply



**Size**  
**Height**  
**Width**  
**Depth**

**Installation**  
910mm (36")  
435mm (18")  
660mm (26")

**Electrical**

230V 50Hz 16A single phase  
Fuse - mains 16A - control 5A

**Water Feed**  
**Supply**  
**Connection**

Cold  
1/2" BSP male parallel

**Washing**  
**cycles**

1. Normal wash  
Wash - Disinfection at  
80°C for 70 seconds -  
Rinse to cool

**Overflow**

1x19mm (3/4") bore.  
End must be visible.  
(UK requirement)

2. Super wash  
Pre flush - Wash -  
Disinfection at 80°C for 70  
seconds - Rinse to cool

**Waste**

82mm (3") 'P' or 'S' trap



Stanbridge Limited, Unit 78, Powder Mill Lane,  
Questor, Dartford, Kent, DA1 1JA  
Tel +44 (0) 1689 806500 [www.stanbridge.co.uk](http://www.stanbridge.co.uk)







## The CS2 ST WASHER / DISINFECTOR



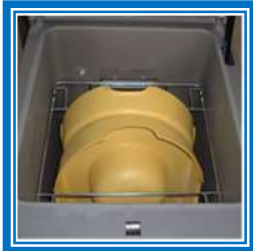
The Compact Superior 2 is specifically designed for multi-storey care homes where code of practice requires a sluice room on each floor

The CS2 medium sized top loading machine washes and disinfects a variety of utensils two at a time. For care homes committed to disposable products it is an ideal, versatile washer/disinfector for the carriers and reusable utensils to complete the infection control barrier. All Stanbridge washer/disinfectors can include the DEOSCALE water treatment system to control limescale build-up and reduce maintenance.

Stanbridge utensil washer disinfectors are manufactured in compliance with the recommendations of British Standard 2745 and to meet the detail requirements of inspectors of the Water Supply Undertakings.

Stanbridge Ltd is approved under BS 5750 for quality assurance.

WRAS Approval No. 0310064 Internal break tank has a type 'A' air gap supply



**Size**  
**Height**  
**Width**  
**Depth**

**Installation**  
910mm (36")  
435mm (18")  
660mm (26")

**Electrical**

230V 50Hz 16A single phase  
Fuse - mains 16A - control 5A

**Water Feed**  
**Supply**  
**Connection**

Cold  
1/2" BSP male parallel

**Washing**  
**cycles**

1. Normal wash  
Wash - Disinfection at  
80°C for 70 seconds -  
Rinse to cool

**Overflow**

1x19mm (3/4") bore.  
End must be visible.  
(UK requirement)

2. Super wash  
Pre flush - Wash -  
Disinfection at 80°C for 70  
seconds - Rinse to cool

**Waste**

82mm (3") 'P' or 'S' trap



Stanbridge Limited, Unit 78, Powder Mill Lane,  
Questor, Dartford, Kent, DA1 1JA  
Tel +44 (0) 1689 806500 [www.stanbridge.co.uk](http://www.stanbridge.co.uk)





## The CS3 HD WASHER / DISINFECTOR



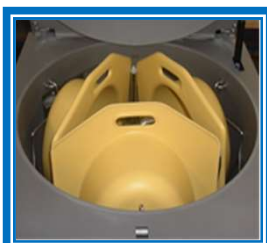
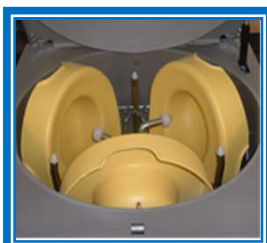
The Compact Superior 3 HD **multi-utensil** machine is designed for the full bed occupancy and high dependency nursing homes which have peak loads and a high utensil volume.

The CS3 HD has the capacity to efficiently wash and disinfect 3 utensils in one operation, cutting water and heating costs, staff waiting time and utensil queueing.

All Stanbridge washer/disinfectors can include the DEOSCALE water treatment system to control limescale build-up and reduce maintenance. Stanbridge utensil washer disinfectors are manufactured in compliance with the recommendations of British Standard 2745 and to meet the detail requirements of inspectors of the Water Supply Undertakings

Stanbridge Ltd is approved under BS 5750 for quality assurance.

WRAS Approval No. 0310064 Internal break tank has a type 'A' air gap supply



**Size**  
**Height**  
**Width**  
**Depth**

Installation  
1100mm (44")  
600mm (24")  
710mm (28")

**Electrical**

230V 50Hz 16A single phase  
Fuse - mains 16A - control 5A

**Water Feed**  
**Supply**  
**Connection**

Cold Feed x 2  
1/2" BSP male parallel

**Washing**  
**cycles**

1. Normal wash  
Wash - Disinfection at 80°C for 70 seconds - Rinse to cool

**Overflow**

1x19mm (3/4") bore.  
End must be visible.  
(UK requirement)

2. Super Wash  
Pre flush - Wash - Disinfection at 80°C for 70 seconds - Rinse to cool

**Waste**

82mm (3") 'P' or 'S' trap



Stanbridge Limited, Unit 78, Powder Mill Lane,  
Questor, Dartford, Kent, DA1 1JA  
Tel +44 (0) 1689 806500 [www.stanbridge.co.uk](http://www.stanbridge.co.uk)





## PULP SUPPORT WASHER/DISINFECTOR



For ultimate infection control the rigid support carrier for cardboard liner bed pans must be treated as a reusable utensil.

The Stanbridge range of washer/disinfectors are perfect to ensure reusable carriers are washed and disinfected to the standards detailed in HTM 20/30 and BS EN ISO 15883.

For your peace of mind the Stanbridge range of washer/disinfectors provide the solution to all user needs for reusable products, bedpans, commode pots, bowls, bottles, jugs and support carriers ensuring clean and disinfected utensils every time.



Stanbridge Limited, Unit 78, Powder Mill Lane,  
Questor, Dartford, Kent, DA1 1JA  
Tel +44 (0) 1689 806500 [www.stanbridge.co.uk](http://www.stanbridge.co.uk)







## Water treatment by DeoScale

DeoScale is a water additive to aid cleaning and control the build-up of hard scale deposits in automatic machines that wash and disinfect reusable bedpans and commode pots.

### Area Scale

In some areas the build-up of limescale is high enough to reduce the effectiveness of the washer/disinfector by causing surface deterioration of utensils. Both performance and appearance suffer.

### Why water treatment?

Water for washing containers for human waste should be conditioned in the same way as dishwashers for household plates and cups to ensure the fatty residue is removed by reduction in the water surface tension.

The centre of excellence for clinical safety of utensils is hosted by the Department of Health and contained in the recommendations of HTM20/30 for best practice.

Guidelines for the use of washer/disinfectors for handling human waste containers include necessary wash treatments to achieve good outcome.

### DeoScale fluid

DeoScale fluid has two components - a non-foaming detergent and a descaler. The addition of a small measured dose of DeoScale fluid to the wash cycle reduces hard water scale build-up. DeoScale is a low-hazard liquid detergent/descaler designed for auto dosing. It is efficient in removing organic and inorganic soils. Low dose in soft water areas reduces water browning.

### Background

There are many 'fixed gadget' devices offered to control or treat limescale in water supplies. Confidence in outcome is inconsistent usually because of a dependency on flow rate and limescale levels.

In consequence DeoScale has been developed to control scale build-up in water systems as a new technology for bedpan or commode washer to provide a predictable outcome for varying degrees of district hardness as well as water flow rates. The dose can be set to match local conditions.



### Benefits

The system is based upon the accurate metered introduction of the specially formulated fluid into one break tank during each cycle. The chemical composition of this fluid is such that the component of temporary hardness in the water is disorientated and prevented from forming a hard scale layer. Any precipitate passes to drain in each water flow cycle.

New equipment remains pristine. Scaled chambers in old equipment return to 'as new' after a once only hand descale. Existing scale on utensils over a period slowly re-combines and surfaces to 'bright'. Pipe work is cleaned. Organic grubbiness is removed.

Breakdowns and engineers' time has fallen on trial sites as the internal system scale reduces by slowly returning to a soft flushable character.

Cost effectiveness can be demonstrated. Utensil management is excellent and in consequence, so is care staff reaction. Soil removal and control of infection is enhanced.

Based upon the water provider's analysis of the water supplied to the washer/disinfector, the dose required can be calculated or put to work on a 'trial and error' basis.

The count of machine cycles per day for each dirty utility room will identify a budget cost.

Hazard is low - liquid is classified as a mild Irritant

### Equipment

The basic dosing facility can be fitted in the factory for new installations or site added and consists of:

1. Metering pump
2. Fluid carrier for a 5 litre container suitable for wall mounting

DeoScale fluid is packed in 5 litre screw top plastic containers.

Typical sales pack is 4x5 litre boxed suitable for groupage transport.

Contract quantities per year are negotiable. Please contact our Spares Department for prices.

### Consumption

The DeoScale consumption for a typical care home or ward with 30 beds would be around 1x5 litres per month for a single machine. In a high scale district this may rise to 2x5 litre per month.



Stanbridge Limited, Unit 78, Powder Mill Lane,  
Questor, Dartford, Kent, DA1 1JA  
Tel +44 (0) 1689 806500 [www.stanbridge.co.uk](http://www.stanbridge.co.uk)





## POTS - PANS & BOTTLES



Commode Insert pan

The insert commode pan improves the commode chair use, as well as sample gathering in the toilet suite.



Slipper pan

The slipper pan has no end pocket to trap soil and eliminates cleaning problems. Three hand grips allow easy positioning. An indent on the plateau reduces point load on the spine. Smooth movement over the mattress is assured.



In-Bed pan

The in-bed pan gives confidence, stability and secure feeling for sitting patients. The buttress edge gives extra support on the mattress, especially backwards. A raised edge helps location and comfort.



Urine bottle

Robust opaque polythene urine bottle, graduated in ml to 1 litre. Complete with snap lid for transit safety.



Round Commode Pot & Lid

The white round commode pot with lid is designed to allow easy cleaning. This commode pan comes complete with a lid and handle making waste disposal easier and hygienic.





## PAN BOTTLE & UTENSIL RACKS

The Amethyst Economic (non-heated) quality stainless steel racks are designed to store bedpans, commode pots and urine bottles efficiently and safely.

All racks are manufactured to an exceptionally high standard in electro polished grade 304 stainless steel with a removable stainless drip tray for easy cleaning and disinfection.



Amethyst Economic Pot, Pan and Bottle Rack 2x2

### Specifications

- Height (mm): 620
- Width (mm): 315
- Depth (mm): 260



Amethyst Economic Pot, Pan and Bottle Rack 4x4

### Specifications

- Height (mm): 620
- Width (mm): 635
- Depth (mm): 260



Amethyst Economic Pot, Pan and Bottle Rack 6x6

### Specifications

- Height (mm): 620
- Width (mm): 935
- Depth (mm): 260





## HAND WASH BASINS



### CLINICAL SIZE HAND BASIN

Stainless steel wall mounted wash basin. Complete with wall mounting brackets, a 32mm (1" 1/4) waste kit. NO OVERFLOW suitable for Care Home & Hospital use. Manufactured from 18 gauge 304 grade stainless steel polished to a satin finish. Supplied with 3" Lever Taps. Overall Size: W 500mm x D 400mm



### HAND WASH BASIN WITH SPLASH BACK

Heavy duty quality, robust construction, good aesthetic style, safety finish is easy to maintain and keep clean. Suitable for any harsh hard working environment where high standard of hygiene is essential. There are no exposed bolts, brackets or components. Designed for hospitals and laboratories.



### SMALL CORNER HAND WASH BASIN: STHB02

Corner mounted hand basin constructed of 0.9mm thick 304 grade satin finish stainless steel for corner fixing and complete with waste. Bowl size: 212 dia x D 90mm . Overall size: W305 x D305 x H90mm



### SMALL HAND WASH BASIN: STAN5

Wall mounted hand basin manufactured from 1.2mm thick 304 grade bright/satin finish stainless steel. Tap holes 28mm dia. Supplied with skirt, wall fixing. Taps and traps extra. Bowl size: W300 x D150 x 100mm Overall size: W350 x D260 H185mm







# DISPENSERS

## No Touch Hand Soap Dispenser

This is a highly versatile automatic Hand Soap Dispenser. This user-friendly system fully adapts to your Care Home needs. Suitable for most soaps dispensed from a refillable container or a disposable pouch. With a large front window to check stock levels. Robust ABS plastic



## Hand Towel Dispensers

This hand towel dispenser is a hard-wearing, versatile system that enables the distribution of interleaved, C-fold and Z-fold hand towels. It is available in a choice of two sizes. Large front window to check stock levels.



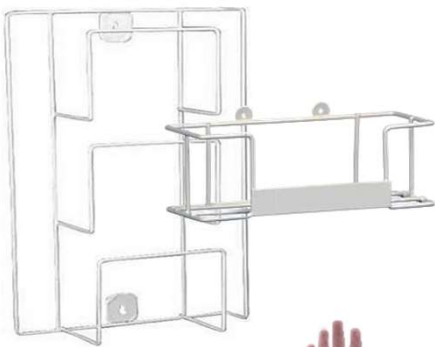
## Apron Dispenser

A wall mountable dispenser for aprons on rolls. These hygienic roll holders will leave surfaces clear and clean and will provide a long lasting and easy dispensing solution. Manufactured from PVC White plastic. Ideal for use with 69cm / 27" width apron rolls or bag rolls. Supplied with fittings for wall mounting (also removable)



## Glove Dispensers

Wall mountable exam glove dispensers are manufactured from white plastic coated wire which is hard wearing and easy to clean and disinfect. Two sizes for either one box or three boxes



## Dispenser Refills

**Gloves** - Clear vinyl disposable examination gloves  
An alternative solution for individuals who are allergic to natural rubber latex as vinyl is made from an oil based plastic. Powder free, ambidextrous, premium medical grade gloves.



**Aprons** - these antibacterial aprons come on rolls in easy-to-dispense packaging and are 42" long. Available in blue, white or yellow. 8mu thick.



**Hand Towels Green 1 ply - C-Fold Hand Towels.** Folded Size: 220 x 92mm, Estimated Unfolded Size: 220(w) x 310(l)mm  
**Hand Towels White 2 Ply - C-Fold 2 Ply Paper Hand Towels** Folded Size: 210 x 96mm, Unfolded Size: 210 x 330mm



C Fold

**Bactericidal Lotion Soap** - Bactericidal hand soap suitable for environments such as hospitals and kitchens where hygiene is essential. Ideal for most bulk fill dispensers.





## JANITORIAL EQUIPMENT & DEEP CLEAN SINKS

Stainless steel deep sinks, dedicated handwash basins, taps and traps



### Combined Janitorial & Hand Wash Unit

Manufactured from 304 grade stainless steel and supplied with adjustable legs, hinged bucket grid, bowl with monobloc swivel mixer tap and combined waste and overflow.



### Free Standing & Wall Mounted Butler Sinks

Manufactured from 1.2mm thick 304 grade satin finish stainless steel with 38mm waste, 2 tapholes, NO overflow or plug, 100mm rear upstand and anti-drip edges all round. Mounted on 30mm square tubular stainless steel uprights with adjustable feet but no undershelf. Can be used in conjunction with the Stanbridge range of stainless steel drainers or independently.

#### Sink 1

Bowl capacity 48 litres W400 x D400 x H300  
Overall dimensions: W500 x D600 x H850

#### Sink 2

Bowl capacity 60 litres W500 x D400 x H300  
Overall dimensions: W600 x D600 x H850

#### Sink 3

Bowl capacity 72 litres W600 x D400 x H300  
Overall dimensions: W700 x D600 x H850





## SHELVING DRAINERS & WORK SURFACES



### Island work surface - Free standing

Manufactured from 304 grade stainless steel with turn down all round and a standard working height of 850mm.

Supplied with stand adjustable feet, undershelf and earth tag.



### Sink unit/Work surface

Manufactured from 304 grade stainless steel with turn down all round and a standard working height of 850mm.

Supplied with 'single bowl' and rear upstand.



### Wall mounted shelf/drainer

Manufactured from 1.2mm thick 304 grade satin polished stainless steel. Supplied with 2 wall mounting brackets, side aprons, 60mm rear upstand, 2 x 30mm square front support legs with adjustable feet. Butler sink to either lip over left or right.

Drainer 600-L600mm x W600mm x H960mm

Drainer 900-L900mm x W600mm x H960mm

Drainer 1200-L1200mm x W600mm x H960mm



### Heavy duty wall mounted shelves

With standard widths of 300mm & 400mm with integral wall fixing brackets.

Shelving in various sizes.





## TAPS & BOTTLE TRAPS



### MONOBLOC - STAN EC 04

Mono Bloc mixer tap sink mounted. Chrome plated quarter turn compression valve. 3" - 6" lever length.



### H SECTION - STAN ST 04

H' Section mixer taps sink mounted. Chrome plated quarter turn ceramic with 3" - 6" lever length.



### PILLAR TAP - STAN EC 03

High neck tap sink mounted. Chrome plated quarter turn ceramic valve 3" - 6" lever length.



### BIB TAPS - STAN ST 02

Bib taps for wall mounting. Chrome plated quarter turn ceramic valve 3" - 6" lever length.



### BOTTLE TRAPS

Chrome plated Bottle Traps



### HAND BASIN TAPS - STAN EC 01

Hand Basin taps. Chrome plated quarter turn ceramic valve 3" - 6" lever length.



Stanbridge Limited, Unit 78, Powder Mill Lane,  
 Questor, Dartford, Kent, DA1 1JA  
 Tel +44 (0) 1689 806500 www.stanbridge.co.uk







## MANUAL SLUICES - SLOP HOPPERS



### GARNET SLUICE (Cleaner, Sluice/Sink)

Stainless steel cleaner sluice/sink unit. Stainless steel hinged bucket grid.

Stainless steel wall mounted 9 litre cistern with cover, chrome plated lever action flush handle, side entry supply and overflow and standard cistern kit.

Stainless steel flush pipe.  
Upstand to rear and anti-drip edges to front and sides.

Wall mounted wrist lever action hot and cold chrome plated bib taps extended for concealed or exposed supply.

Two cantilever wall brackets.

Hopper 530 x 530mm.



### SAPPHIRE SLUICE (Sluice Unit)

Stainless Steel Sluice Unit.

Stainless steel wall mounted 9 litre cistern with cover, chrome plated lever action flush handle, side entry supply and overflow and standard cistern kit.

Stainless steel flush pipe.  
Upstand to rear and anti-drip edges to front and sides.

Surface mounted wrist lever action chrome plated monobloc dual flow mixer tap with swivel spout to sluice.

Two cantilever wall brackets.

Hopper 530 x 530mm.





## COMBINED MANUAL SLUICES



**AQUAMARINE**  
(Sluice and Work Surface)

Stainless steel left or right handed sluice and work surface.

Stainless steel wall mounted 9 litre cistern with cover, chrome plated lever action flush handle, side entry supply and overflow and standard cistern kit.

Stainless steel flush pipe.

Upstand to rear and anti-drip edges to front and sides.

Surface mounted wrist lever action chrome plated monobloc dual flow mixer tap with swivel spout to sluice & Bottle trap.

Two sets of bearers and stainless steel front support legs with adjustable feet or two cantilever wall brackets.

Hopper and work surface 1070x530mm.





## COMBINED MANUAL SLUICES



### OPAL SLUICE

(Sluice Sink and Work Surface)

Stainless steel left or right handed sluice and sink unit with work surface.

Stainless steel wall mounted 9 litre cistern with cover, chrome plated lever action flush handle, side entry supply and overflow and standard cistern kit.

Stainless steel flush pipe.

Upstand to rear and anti-drip edges to front and sides.

Chrome plated 38mm deep seated waste fitting to sink and plastic overflow pipe.

Wrist lever action hot and cold chrome plated monobloc dual flow mixer tap with swivel spout to sluice and Bottle trap.

Two sets of bearers and two stainless steel front support legs with adjustable feet or two cantilever wall brackets.

Hopper, sink and work surface 1600x530mm.





## CUPBOARDS & SINK UNITS

### Cupboard and Sink Unit



Constructed of AISI 304 18/8-10 stainless steel.

Available in varying sizes.

Available with left or right handed drainer.

Equipped with slopping groove drainers, so as to guide the draining water into the basin.

Equipped with stainless steel legs which are adjustable in height.

### Wall Mounted Cupboard



Constructed of AISI 304 18/8-10 stainless steel.

Available in varying sizes.

Equipped with one shelf which is adjustable in height.







## To Order Deoscale Dosing Fluid or New Utensils

Call: 01689 806500

Email: [sales@Stanbridge.co.uk](mailto:sales@Stanbridge.co.uk)

Visit: [www.Stanbridge.co.uk](http://www.Stanbridge.co.uk)

Or Scan:



Stanbridge Limited, Unit 78, Powder Mill Lane,  
Questor, Dartford, Kent, DA1 1JA  
Tel +44 (0) 1689 806500 [www.stanbridge.co.uk](http://www.stanbridge.co.uk)





CELEBRATING 65 YEARS

Stanbridge Limited, Unit 78, Powder Mill Lane,  
Questor, Dartford, Kent, DA1 1JA

+44 (0) 1689 806500 [www.stanbridge.co.uk](http://www.stanbridge.co.uk)

*leaders in infection control equipment for 65 years*

