



MEDI+

From delicate, temperature-sensitive laboratory uses to high-value pharmaceuticals, we've put all our expertise into developing the Medi+ range - providing reliable, precise, stable and robust storage conditions.

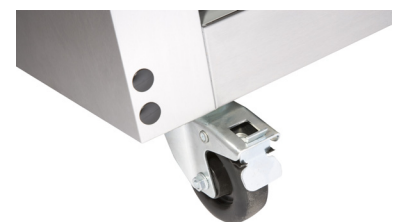
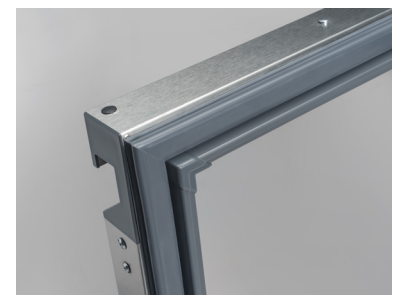


The range offers precise, reliable and stable temperature control. A choice of 17 models, from compact undercounter units to upright cabinets, including slimline versions enables operators to select a fridge or freezer that best suits both application and available space.

There are 17 models within the Medi+ range, from compact undercounter units to upright cabinets, including slimline versions. All models are available with solid or glass doors.

This diversity ensures products are available to suit applications for the storage of drugs, medicines and vaccines in a variety of sites including hospitals, laboratories, nursing and care homes, pharmacies, doctors' and dentists' surgeries, vets and other clinical settings.

- **Heavy duty construction** - stainless steel exterior with aluminium interior provides a robust, durable and hygienic cabinet with easy to clean surfaces
- **Spark free interior** - manufactured without any potentially sources of ignition
- **Barrel locked door** for added security
- **Removable racking system** with anti-tilt trayslides & nylon coated shelving*
- **Internal LED lighting** provides bright, low heat lighting whilst delivering great energy savings and clear visibility
- **Medi+ Controller** features a Modbus network data connection for comprehensive monitoring of temperatures, alarms and defrost via a 3rd party supervisory system
- **Magnetic balloon door gaskets** with 100% tight seal, preventing heat ingress and enhancing energy efficiency
- **Natural hydrocarbon refrigerant** with low GWP / zero ODP delivers superior thermal efficiency
- **Precision injected, high density** polyurethane insulation with low GWP (Global Warming Potential) and zero ODP (Ozone Depletion Potential)
- **Engineered to operate efficiently up to 43°C ambient***
- **Heavy duty, non-marking** swivel castors with roller bearings and brakes improve both mobility and stability and make it easy to move for cleaning
- **Choice of options** include glass or solid doors and a choice of white nylon coated wire shelving as standard or optional perforated steel shelves



*NB: except WMP135