



## GAS EQUIPMENT FOR AMBULANCE GAS SUPPLY SYSTEMS

# AMBULANCE PANEL SYSTEM

The Ambulance panel system is a set of components that are to be assembled together. The system is designed for use as an integral part of ambulance cars and is intended for administration of the following medical gases in the treatment, management, diagnostic, evaluation and care of the patient:

- O<sub>2</sub>
- AIR
- Mixture of O<sub>2</sub>+N<sub>2</sub>O

The individual components can be combined in many different configurations giving the end user the flexibility.

The Ambulance Panel System complies with EN 1789.



AMBULANCE PANEL SYSTEM COMPONENTS

AMBULANCE REGULATORS

The Ambulance Panel System can be delivered with two types of regulators - MediReg® or Varimed. The ambulance regulators are lightweight and designed to withstand the conditions in the road ambulance and are manufactured according to EN ISO 10524-1, EN 1789, Medical Devices Directive 93/42/EEC. The ambulance regulators with standard G3/8" connections, optionally with quick connectors, can be delivered with electronic signal gauge or sensor to be connected to the ambulance monitoring or gas monitoring systems. The ambulance regulators are easily installed to the ambulance panel system thanks to its ergonomic and compact design, and a wide range of inlet connections.



MediReg®  
with 3/8" thread



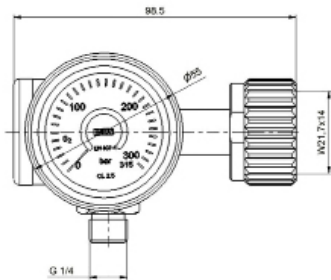
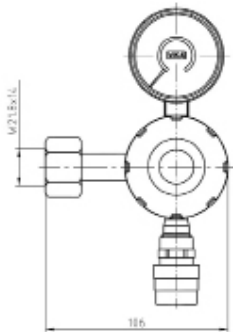
MediReg®  
with electrical gauge



MediReg®  
with gauge and sensor



Varimed



AMBULANCE HOSE

The hoses connect to the regulators and the panels. The hoses are made up to individual specifications and are clamped and tested ready to install in the ambulance. The hoses are designed to withstand the conditions in the road ambulance and are manufactured according to EN ISO 5359, EN 1789, Medical Devices Directive 93/42/EEC. Colour coding of ISO 5359. The hoses is delivered antistatic with the standard connection G3/8" and wide range of country specific connections. The hose lengths is configurable from 0.5 to 10 m. The low pressure hoses can also be delivered stainless steel reinforced.



Configurable lengths  
and connections

DEFINITION AMBULANCE HOSE

Type:	Ambulance Hose, Stainless steel reinforced.
Gas:	O <sub>2</sub>
Inlet:	G3/8", G1/4",QC according to national standards
Outlet:	G3/8", G1/4",QC according to national standards



Standard Ambulance Hose



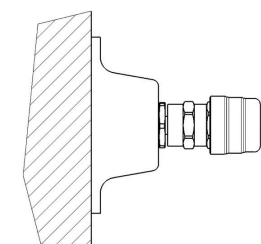
Stainless steel reinforced



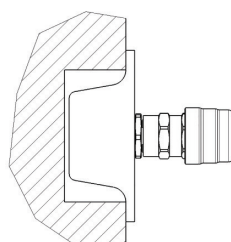
Exposed version



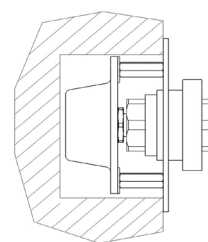
Recessed version



Sketch of exposed mounted panel



Sketch of recessed mounted panel



Sketch of double recessed mounted panel



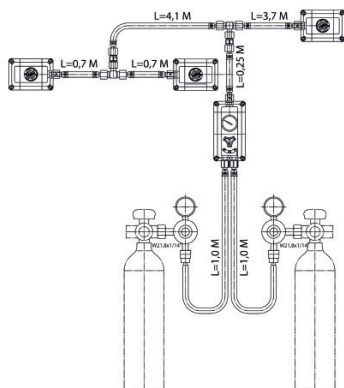
FINAL PRODUCT Ambulance panel	GAS		NUMBER OF QC OUTLETS	INLET CONNECTOR STANDARD		MOUNTING		OPTIONS	
AP II	O	O2	1	BS	BSI	E	Exposed	S	Manual switch
	A	AIR	2	CZ	Czech	R	Recessed	M	Gauge
	V	VAC	3	SS	Sweden	DR	Double Recessed	O	Outlet
	N	N2O	4	NF	France			FS	FlowSelector
	A8	AIR8		DS	DISS			EJ	Suction Ejector
	ON	O2/N2O		UN	UNI 9507				
	CG	O2, AIR, VVAC...							

## TERMINAL UNITS - GAS OUTLET

Medical terminal units provide quick and easy connection of hospital ward gas equipment to the hospital gas source. The type of medical gas outlets are decided by national standards in each country and sometimes from local requests in each hospital. GCE complies with ISO 7396 and national installation standards with secure products where every product is fully tested in production. Our Medical gas outlets are in accordance with ISO EN 9170-1 international standard.

- > All functional components are from brass
- > Simple installation
- > Fast connection and disconnection
- > Designed for medical environment, small size and easy to clean
- > Complies with colour coding and description by standard
- > After 10 years it is possible to upgrade the units with a special upgrade pack without building modification
- > Recessed and exposed versions
- > Wall housing is compatible with all GCE MediUnit standards like DIN, BSI, SS, CZ, AFNOR





## EXAMPLE AMBULANCE PANEL SYSTEM

Below example shows an Ambulance Panel System with following components:

**3 × AP II O<sub>2</sub> 1×BS E**

Three AP II with one outlet, British standard, exposed

**1 × AP II O<sub>2</sub> E S G**

One AP II with switch and gauge, exposed

**2 × Amb.Hose O<sub>2</sub> 1 m G3/8-BS Probe**

Two ambulance hoses, 1 meter, with 3/8 connection in one end and a British style probe in the other

**1 × Amb.Hose O<sub>2</sub> 0,25 m G3/8-G3/8**

One hose, 25 cm, with 3/8 connections

**1 × Amb.Hose O<sub>2</sub> 3,7 m G3/8-G3/8 CTF**

One hose, 3,7 meter, with 3/8 connections, one end not clamped

**1 × Amb.Hose O<sub>2</sub> 4,1 m G3/8-G3/8 CTF**

One hose, 4,1 meter, with 3/8 connections, one end not clamped

**2 × Amb.Hose O<sub>2</sub> 0,07 m G3/8-G3/8**

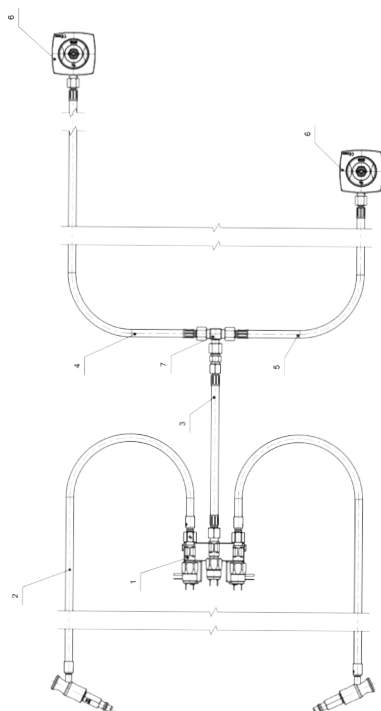
One hose, 7 cm, with 3/8 connections

**2 × T-Piece**

One T-pieces with 3/8 connections

**2 × Varimed regulators**

Two Varimed regulators



Ambulance Panel System with changeover

**2 × TU O<sub>2</sub> DIN**

2 Terminal units, German standard

**1 × Changeover**

Automatic changeover with pressure switches

**2 × Amb.Hose O<sub>2</sub> 1,2 m G1/4-DIN Probe**

Two ambulance hoses, 1,2 meter, with 1/4 connection in German style probe

**1 × Amb.Hose O<sub>2</sub> 0,25 m G3/8-G3/8**

One hose, 25 cm, with 3/8 connections

**1 × Amb.Hose O<sub>2</sub> 1,0 m G3/8-G3/8**

One hose, 1 meter, with 3/8 connections

**1 × Amb.Hose O<sub>2</sub> 0,5 m G3/8-G3/8**

One hose, 0,5 meter, with 3/8 connections

**2 × Amb.Hose O<sub>2</sub> 0,07 m G3/8-G3/8**

One hose, 7 cm, with 3/8 connections

**1 × T-Piece**

One T-pieces with 3/8 connections

**1 × Adapter G3/8-G3/8**

Adapter 3/8