

Heatherwood Hospital

New GP Hub

CLIENT

Frimley Health NHS Trust

M&E DESIGN

Stuart McCurry & Partners

PROJECT VALUE

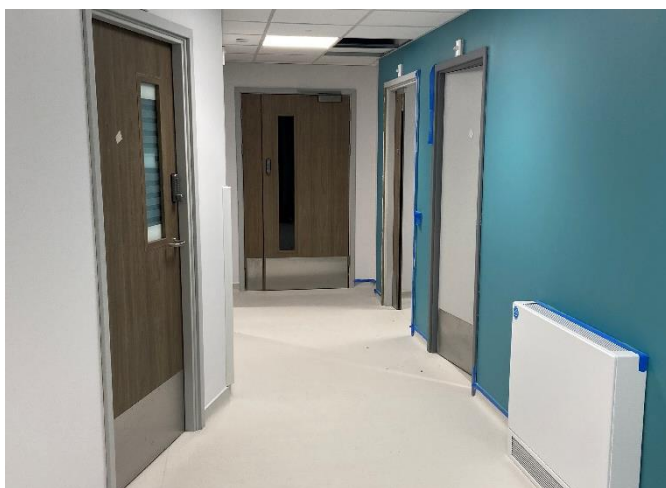
£3 million



The project was the conversion of the existing mental health facility of the Greenwood Offices Building at Heatherwood Hospital into a General Practitioners' (GP) Hub into a modern GP Hub to house two separate GP practices in one building, to allow the practices to consolidate and share resources whilst also increasing the facilities on offer to each. The existing building had been decommissioned and left empty for a number of years and as such none of the existing services were in a serviceable condition.

The proposed design consisted of Combined Reception and Waiting Areas, Consulting Rooms, Treatment Rooms, Clean and Dirty Utility Spaces and a dedicated Minor Operations Room.

The services design consisted of full mechanical ventilation throughout to the standards set out in the HTMs, particularly HTM 03-01.



As part of the scheme the building was also made autonomous from the rest of the hospital estate with new incoming gas, water, fire mains, power and telecoms. SMP were responsible for the designs to divorce this building from the rest of the hospital's Heatherwood site and to apply and coordinate the new incoming services.

Electrically the offices were fully refurbished with new power, data, security and LED lighting. The main part of the electrical design was the installation of a new UKPN substation which was installed on the site's boundary with a new incoming power supply feeding a large floor mounted electrical switchboard and new metering.